

A Typological Approach to Understanding the Heterogeneity among Female Dating Intimate Partner Violence (IPV) Perpetrators

Hilary Harding

University of Georgia

2009 SOPHE/CDC Student Fellow in Injury Prevention

Society For Public Health Education (SOPHE) 2009 Annual
Meeting

Philadelphia, PA

November 6th, 2009

Dating Intimate Partner Violence

- Large societal burden of intimate partner violence¹.
- Dating violence in adolescence and young adulthood is a risk factor for later intimate partner violence².
- Violence and abuse within young adult dating partners is prevalent³ and bidirectional⁴.

¹CDC, 2006
²Whitfield et al., 2003; Wolfe et al., 2004; Smith et al., 2003

³Magdol et al., 1997; O'Leary et al., 2008; Straus et al., 2008

⁴Archer, 2000; Straus & Ramirez, 2007

Breaking down the construct: Perpetrator Typologies

- Identifying subgroups of perpetrators enables...
 - Identification of diverse developmental pathways.
 - Identification of unique areas for intervention or treatment efforts.
 - Improved risk assessment for victims.
 - A better understanding of the construct of “intimate partner violence.”

Holtzworth-Munroe & Stuart (1994) Typology of Male Batterers

	Relationship Only	Borderline/ Dysphoric	Generally Violent/ Antisocial
Personality / Psychopathology :	Low pathology	Borderline PD Symptomatology	Antisocial PD Symptomatology
Severity of Relationship Violence:	Low severity	Moderate – High severity	Moderate – High severity
Generality of Violence:	Low generality	Low generality	High generality

Aims of the Present Study

- Lend validity to typological/classification efforts using a sample of **young adult, dating violence** perpetrators.
- Examine the usefulness of previously established factors (violence severity, generality, and personality pathology) in explaining variation in **female perpetration**.

Method

- Preliminary data from an ongoing study
- Participants
 - College men and women with a current or recent dating relationship lasting at least 3 months
 - $N_{\text{female perpetrators}} = 163$
- Procedure
 - Online survey taken during data collection sessions in a computer lab or classroom
 - Procedures approved by UGA IRB

Constructs of Interest

- To Differentiate Subgroups:
 - Physical Aggression in Relationship¹
 - Borderline Personality Traits ²
 - Antisocial Personality Traits²
 - Aggression perpetrated against people outside of the relationship (e.g., friends, acquaintances, police, teachers)³

¹ CTS-2; Straus, Hamby, Boney-McCoy, & Sugarman, 1996

² MCMI-III; Millon, 1994

³ Holtzworth-Munroe et al., 2000; Boyle et al., 2008

Constructs of Interest

- To Validate Subgroups:
 - Distal Correlates
 - Childhood maltreatment¹
 - Proximal Correlates
 - Using violence as a means of **control**: Proximal Antecedents of Violent Episodes²
 - PTSD Symptomatology³
 - Emotion Dysregulation⁴

¹ CTQ; Bernstein & Fink, 1998

² PAVE; Babcock, Costa, Green, & Eckhardt, 2004

³ PCL; Weathers, Litz, Herman, Huska, & Keane, 1993

⁴ DERS; Gratz & Roemer, 2004

Analytic Procedures

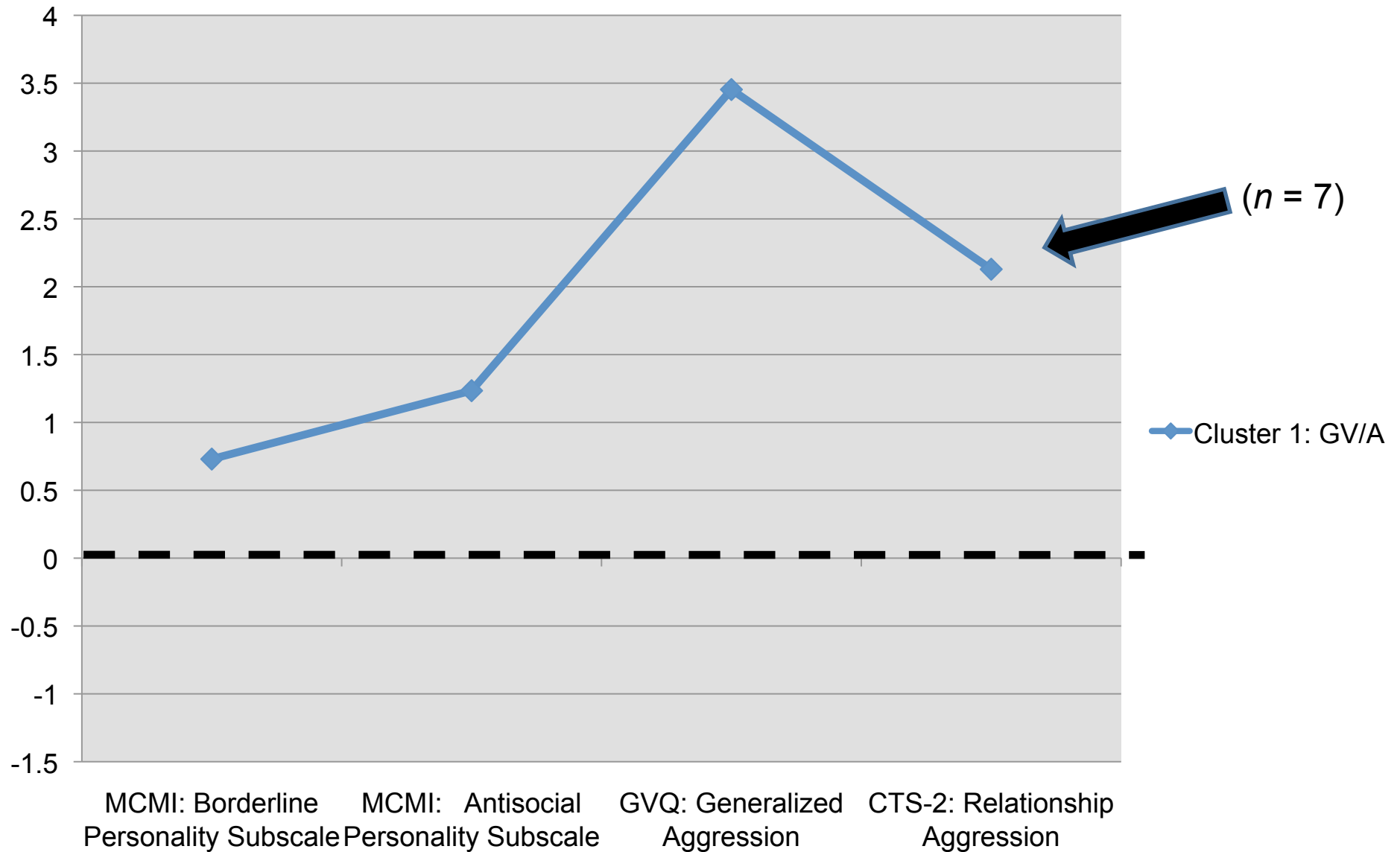
- Model-Based Cluster Analysis¹
 - Model selection based on provided fit index (BIC)
 - Best fit = 5 clusters
- Examination of cluster profiles
 - One-way Analyses of Variance (ANOVAs)
 - Tukey post-hoc tests comparing group mean differences

¹ *MClust*; for R software; Fraley & Raftery, 1998

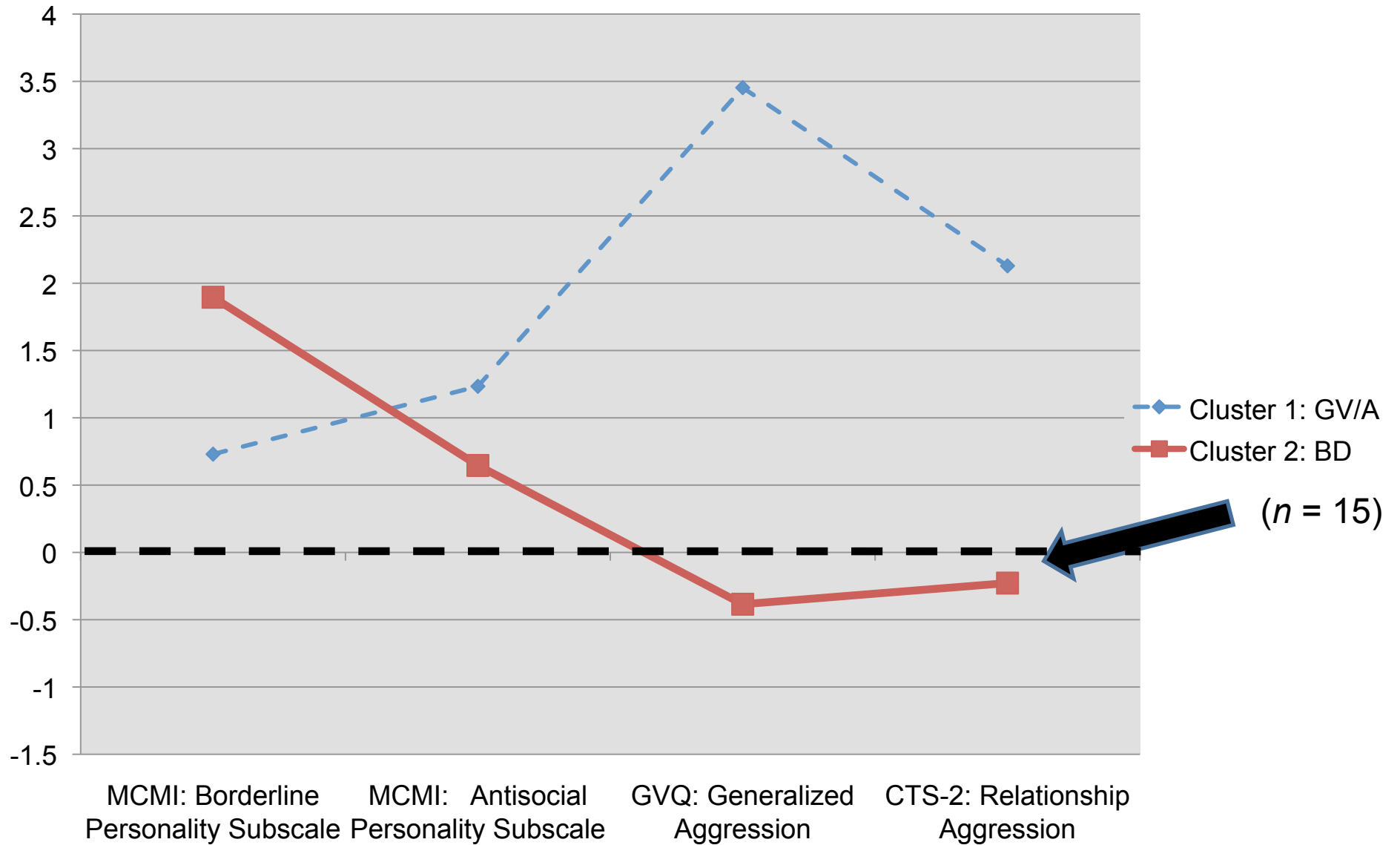
1) Cluster Description

Primary research question: Do the five clusters reflect theoretically proposed differences in personality pathology and severity/generalizability of violence?

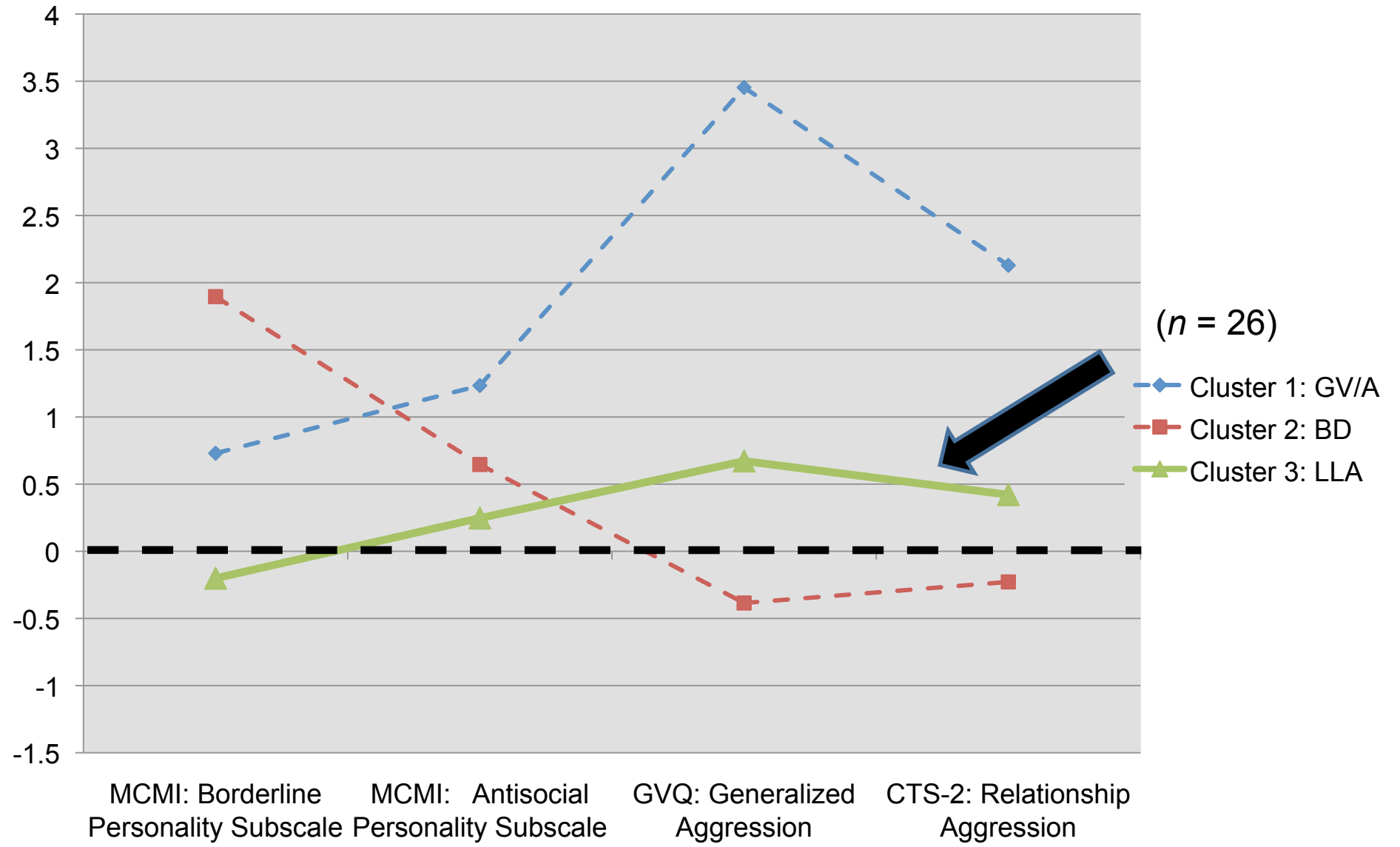
Cluster 1: The Generally Violent/Antisocial Perpetrators (GV/A)



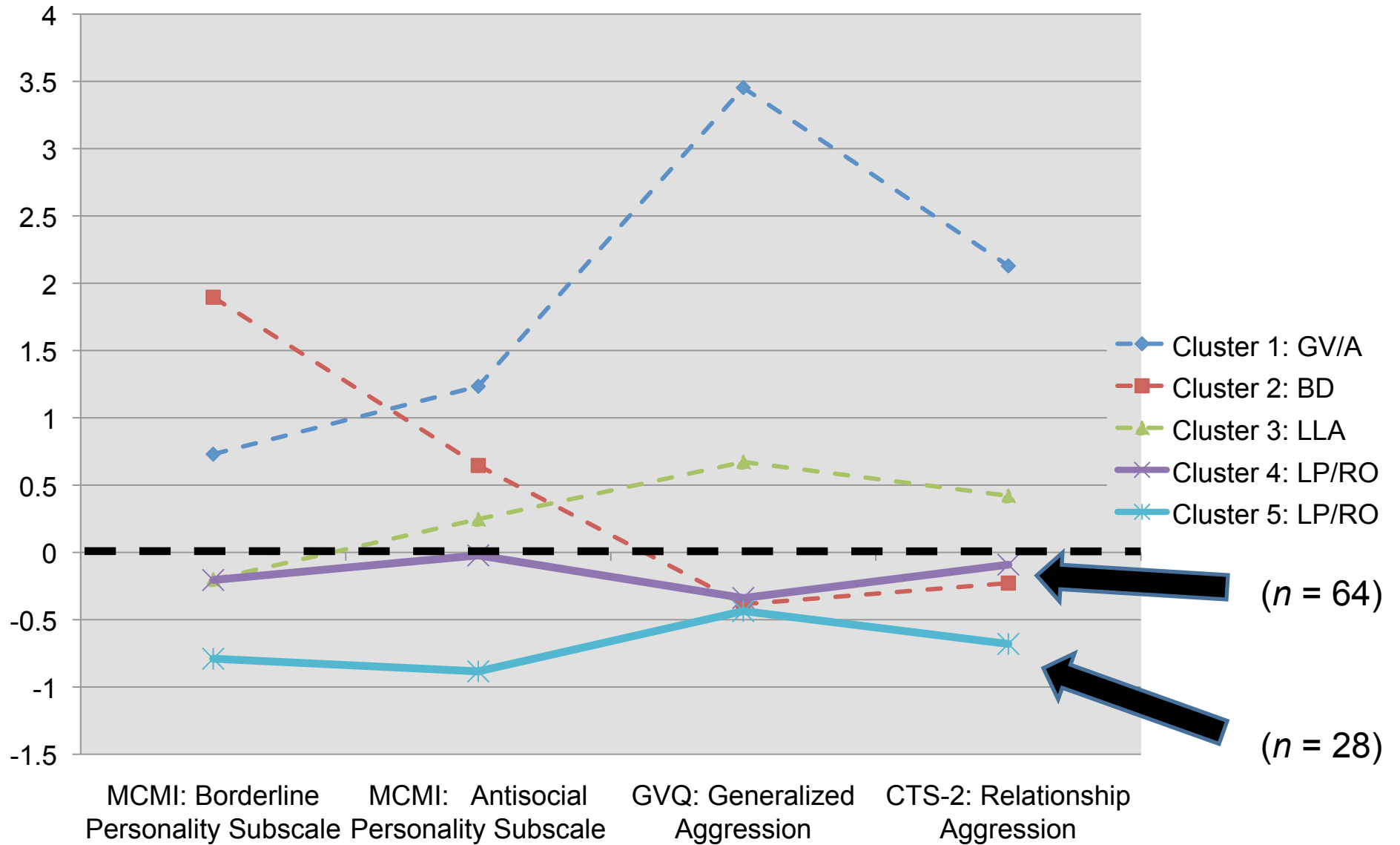
Cluster 2: The Borderline/Dysphoric Perpetrators (BD)



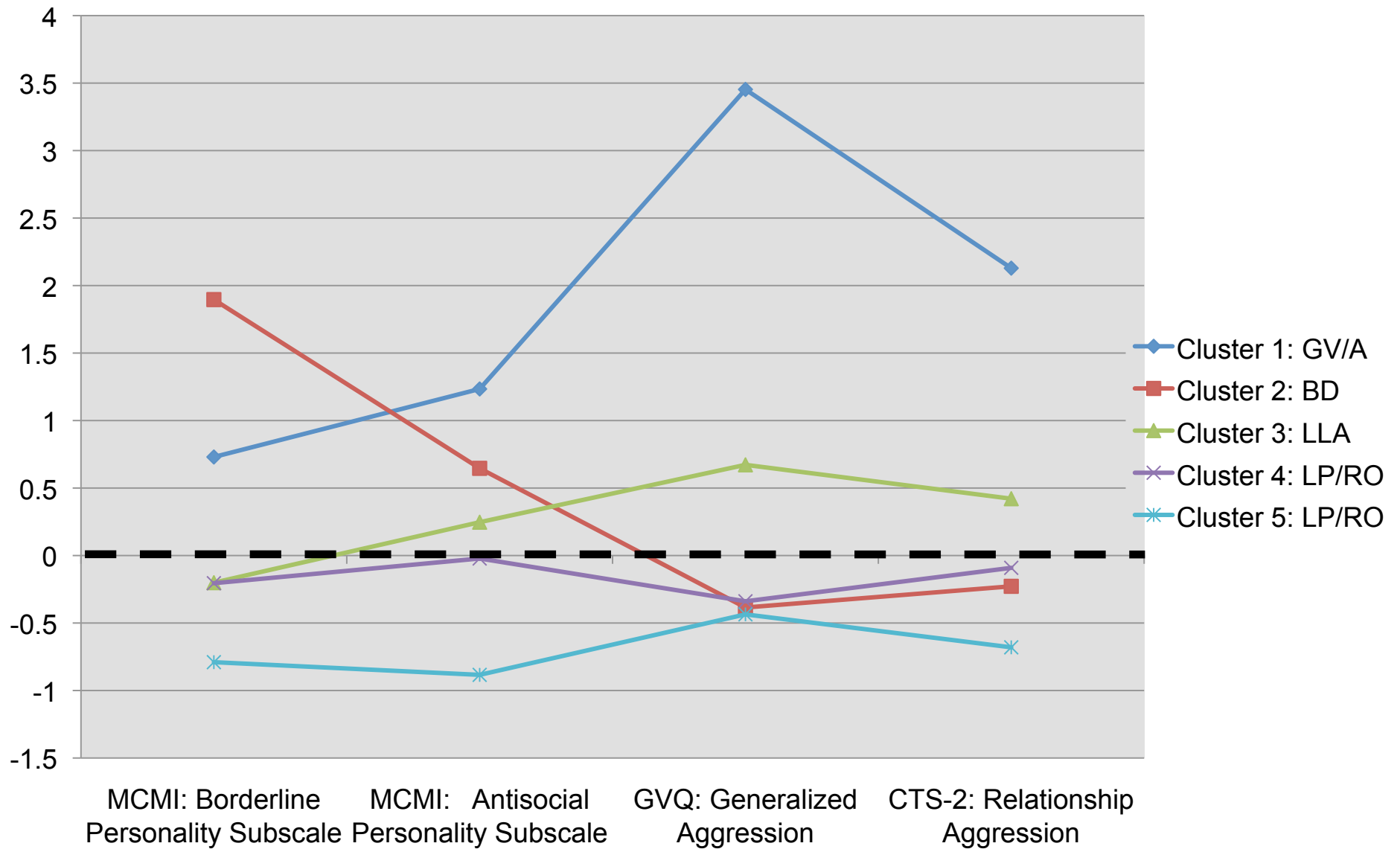
Cluster 3: The Low-level Antisocial Perpetrators (LLA)



Clusters 4 & 5: Low pathology and low aggression



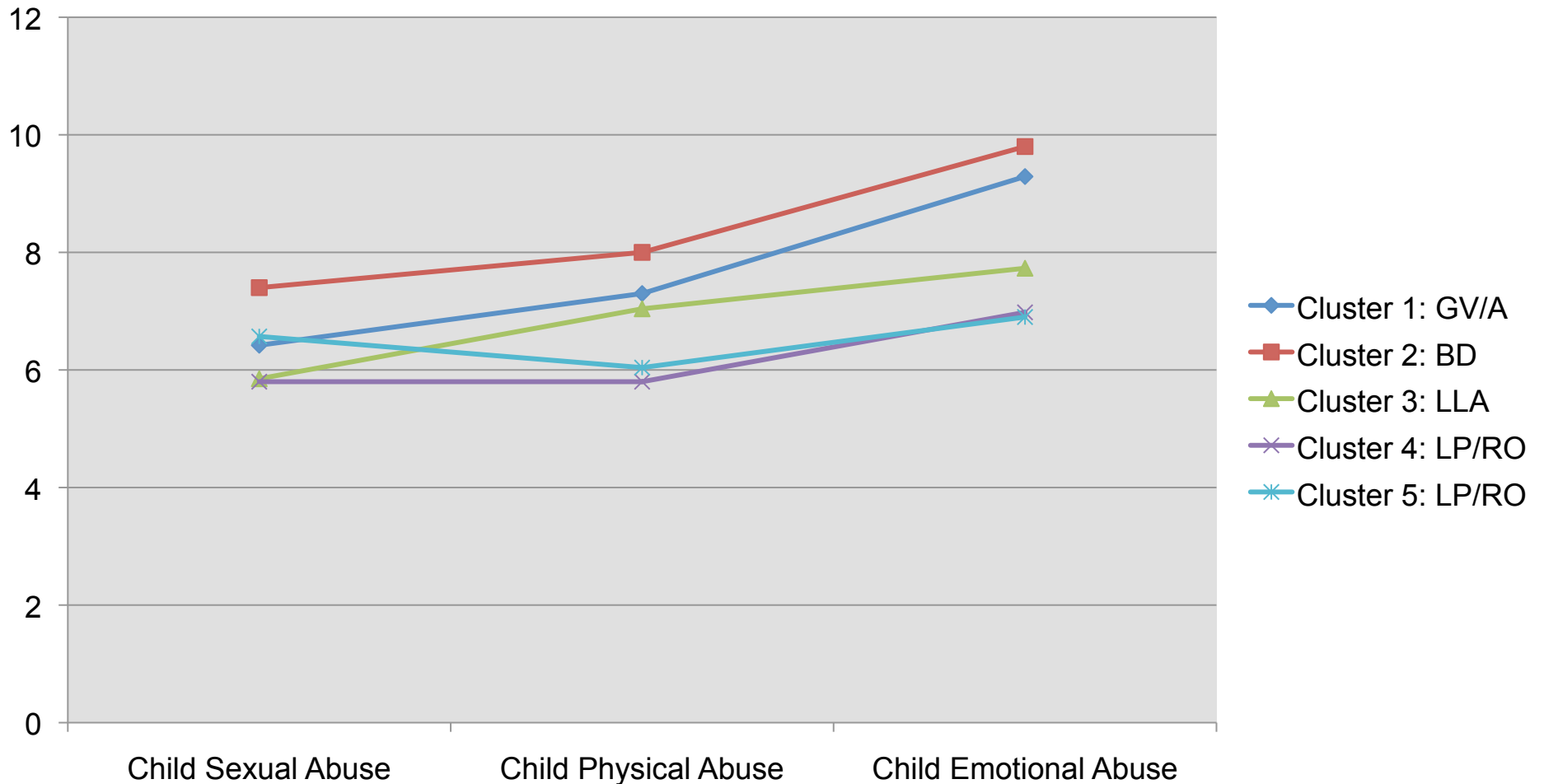
All Clusters



2) Cluster Validation

Primary research question: Do the five clusters differ on associated variables as would be expected based on previous literature?

Self Report of Child Maltreatment History

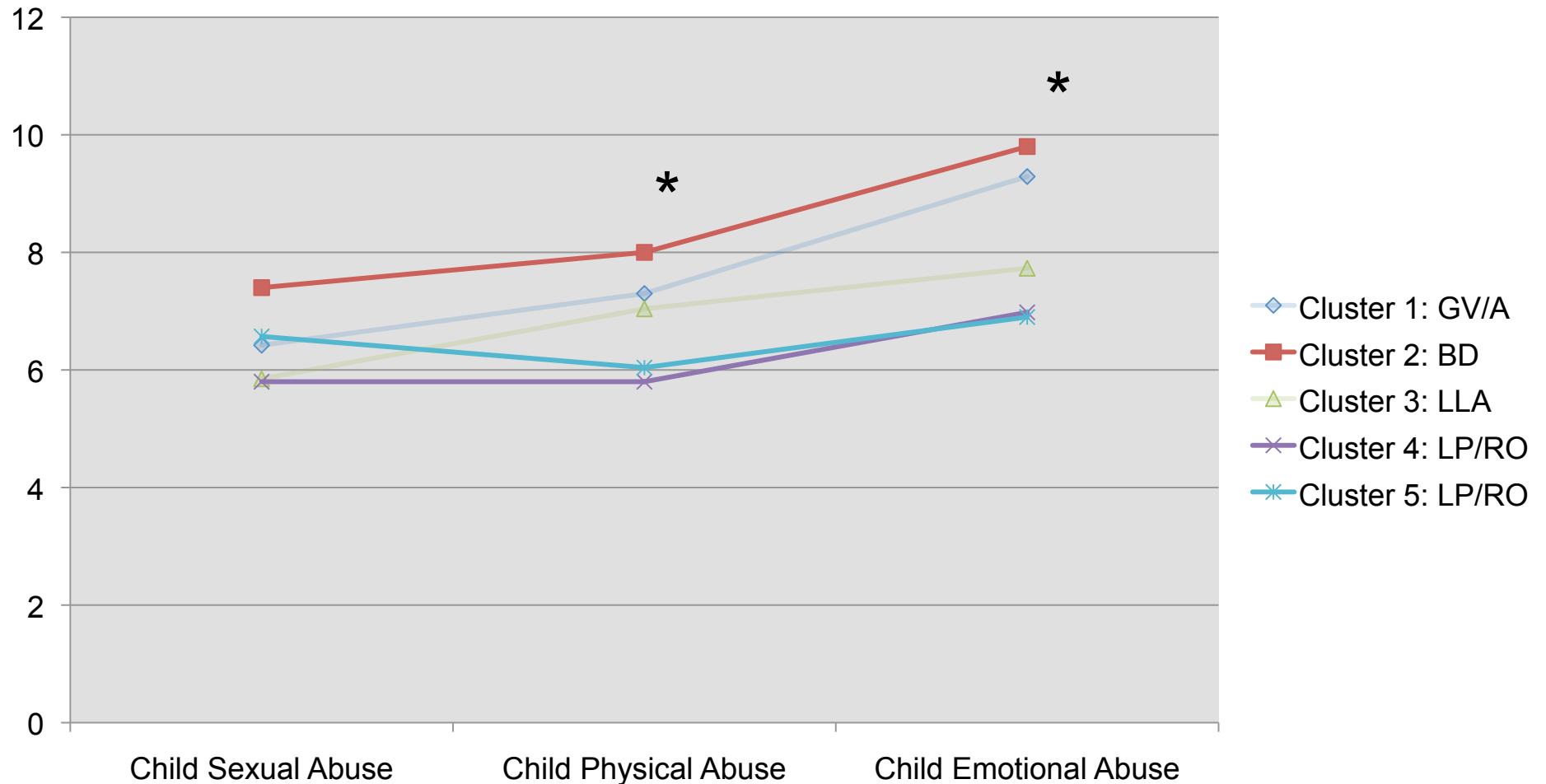


CSA: $F(4, 139) = 0.69^{ns}$, partial $\eta^2 = .02$

CPA: $F(4, 139) = 4.07^{**}$, partial $\eta^2 = .11$

CEA: $F(4, 139) = 3.60^{**}$, partial $\eta^2 = .10$

Self Report of Child Maltreatment History

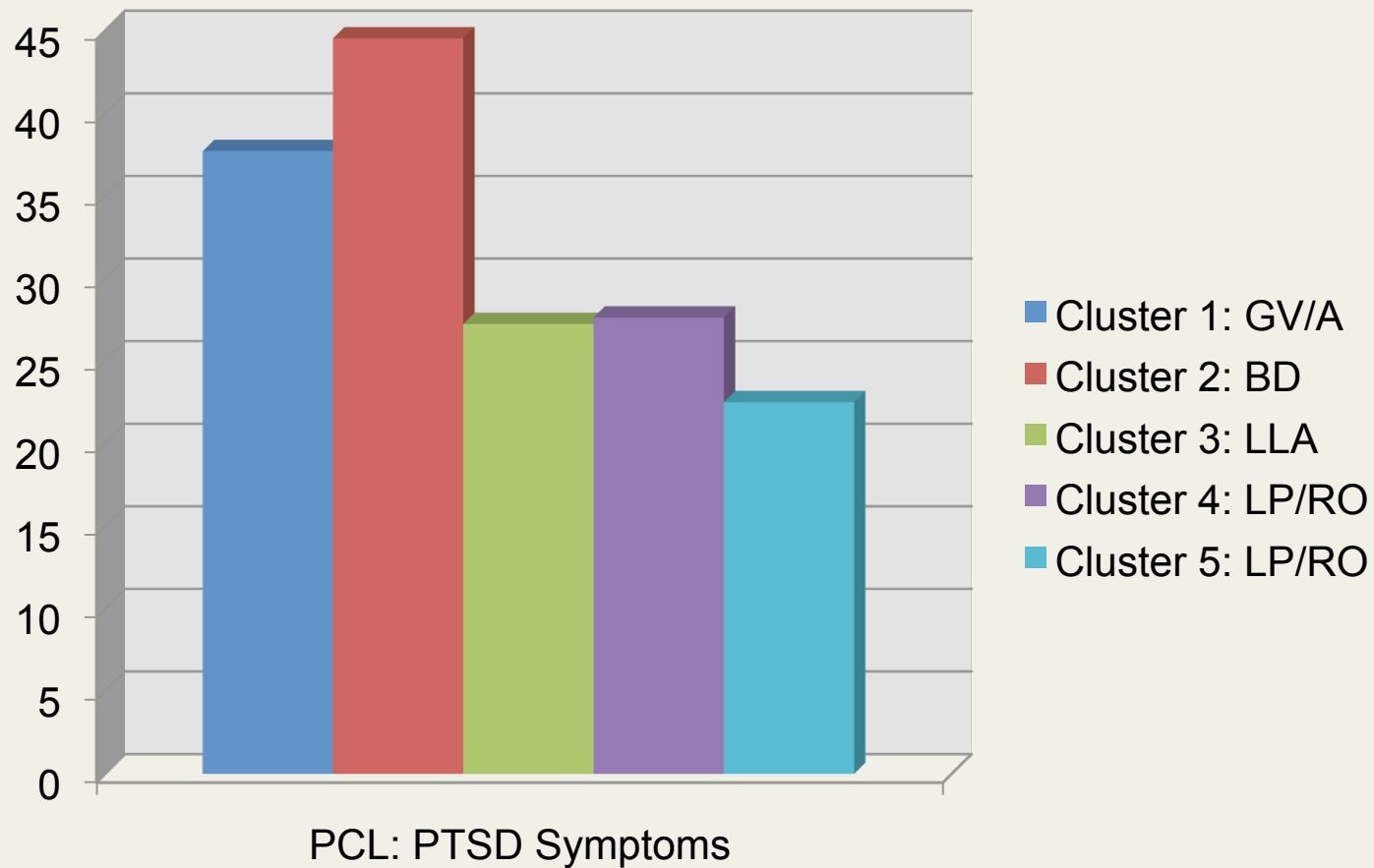


CSA: $F(4, 139) = 0.69^{ns}$, partial $\eta^2 = .02$

CPA: $F(4, 139) = 4.07^{**}$, partial $\eta^2 = .11$

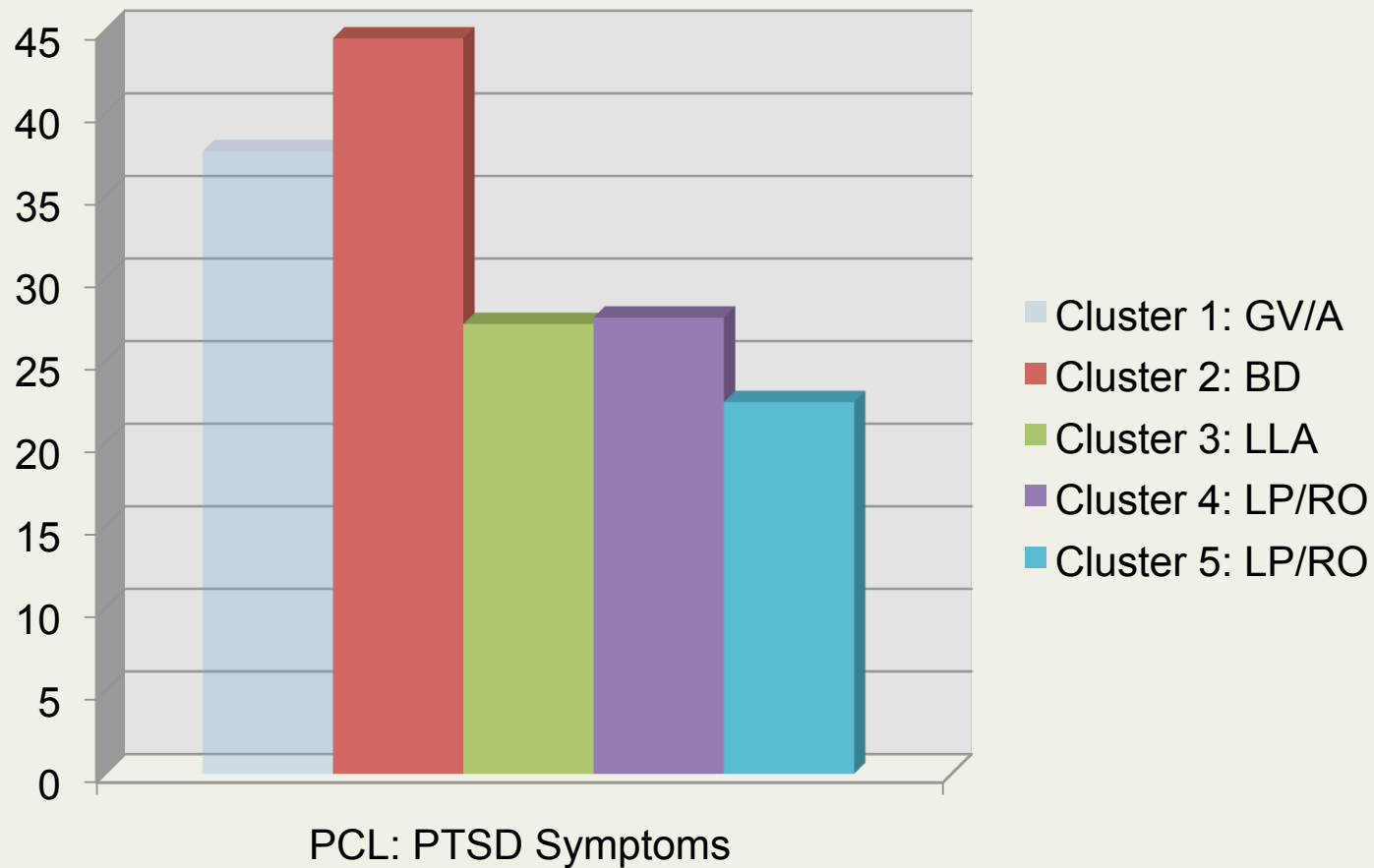
CEA: $F(4, 139) = 3.60^{**}$, partial $\eta^2 = .10$

Posttraumatic Stress Disorder Symptomatology



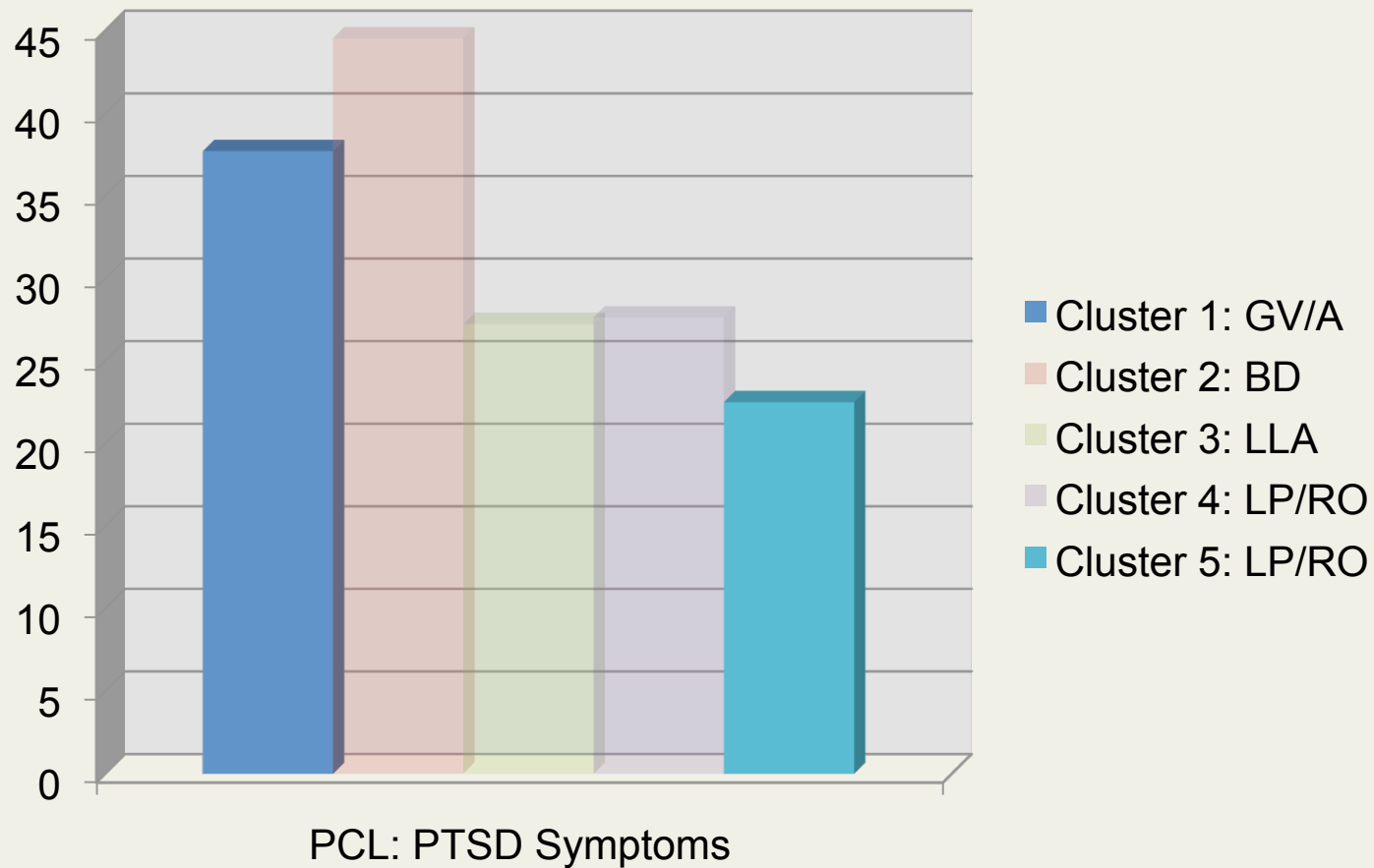
$F(4, 136) = 13.49^{**}$, partial $\eta^2 = .29$

Posttraumatic Stress Disorder Symptomatology



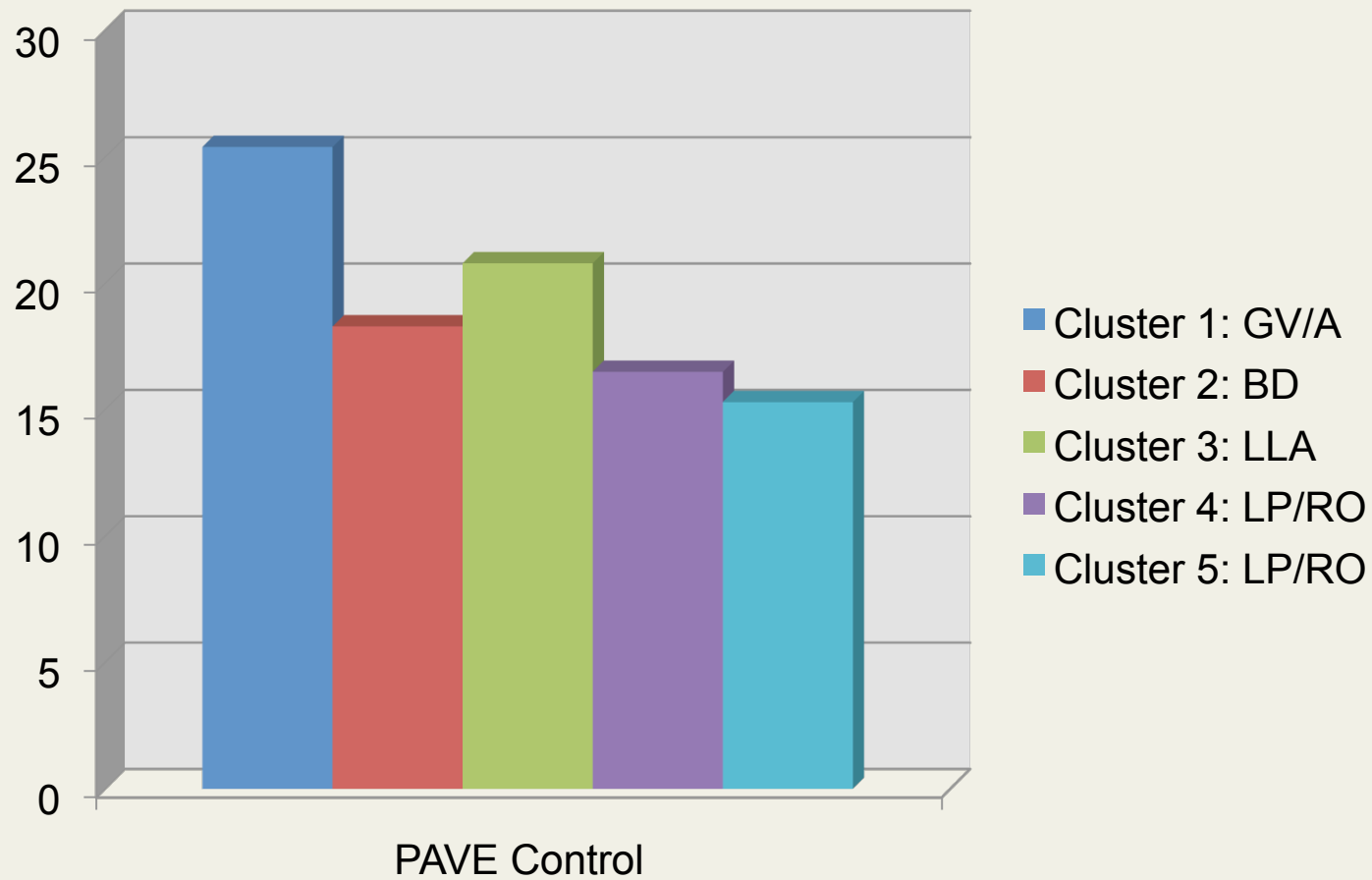
$F(4, 136) = 13.49^{**}$, partial $\eta^2 = .29$

Posttraumatic Stress Disorder Symptomatology



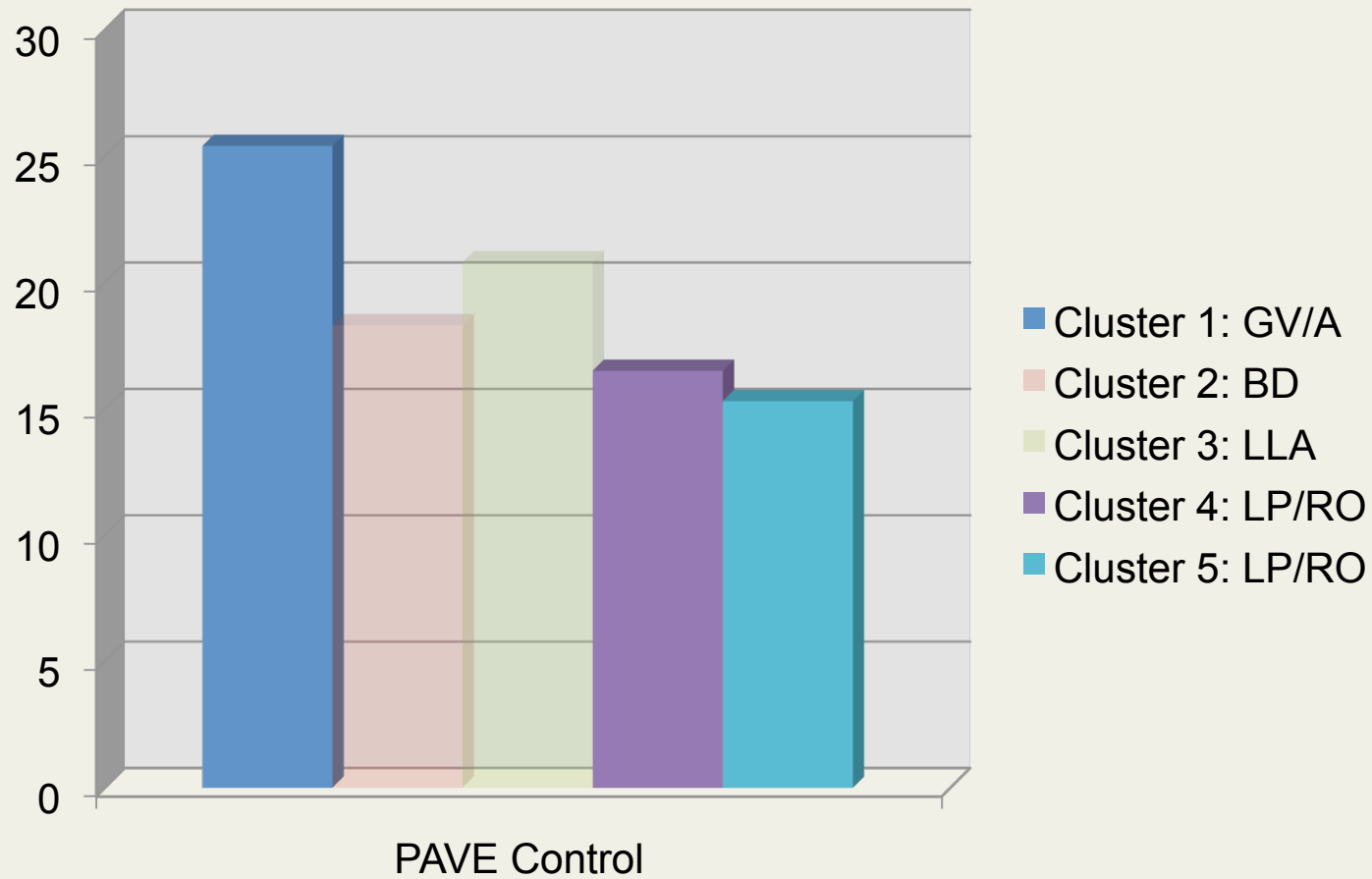
$F(4, 136) = 13.49^{**}$, partial $\eta^2 = .29$

Proximal Antecedents to Violence



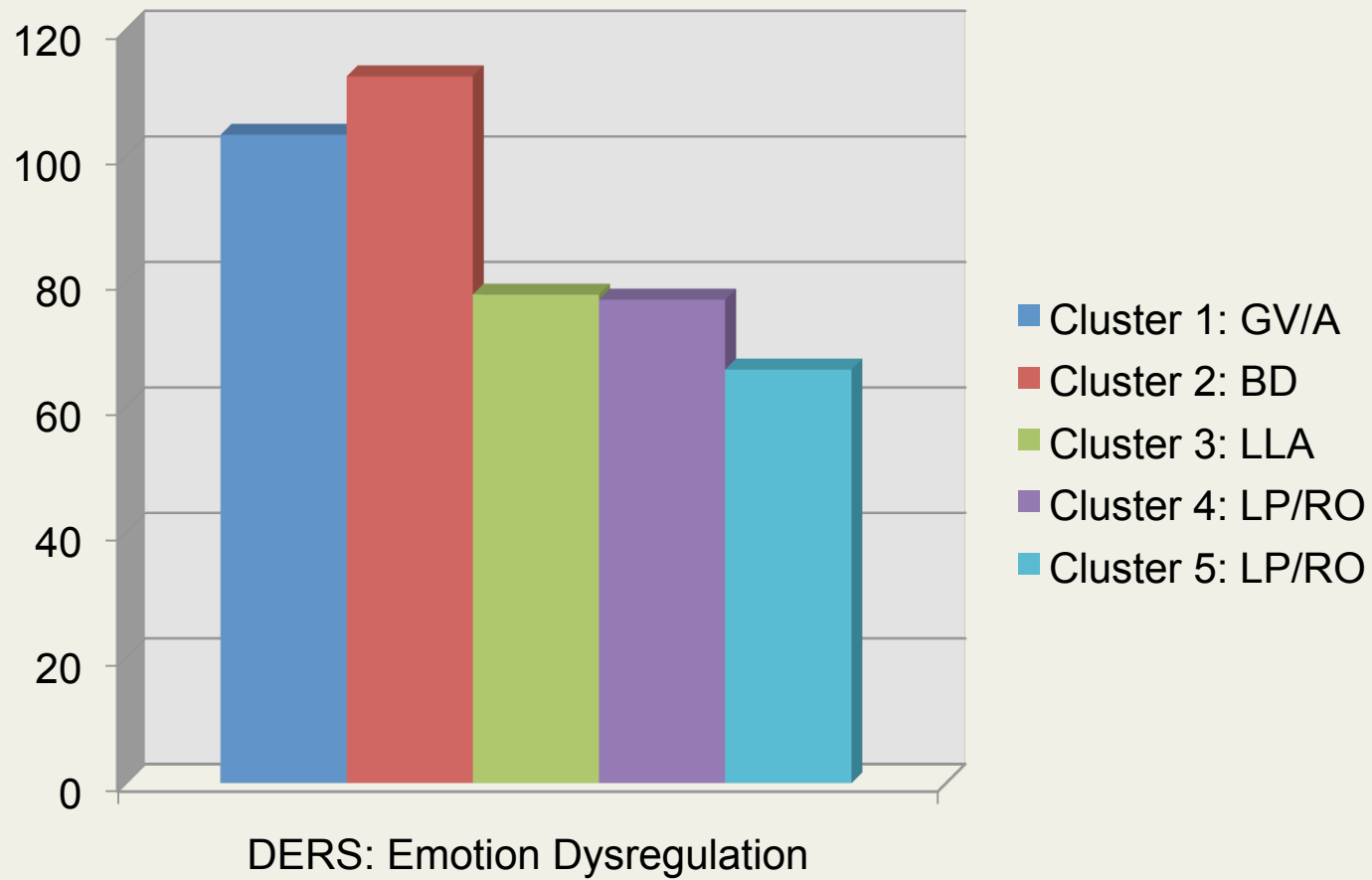
$F(4, 127) = 4.34^{**}$, partial $\eta^2 = .12$

Proximal Antecedents to Violence



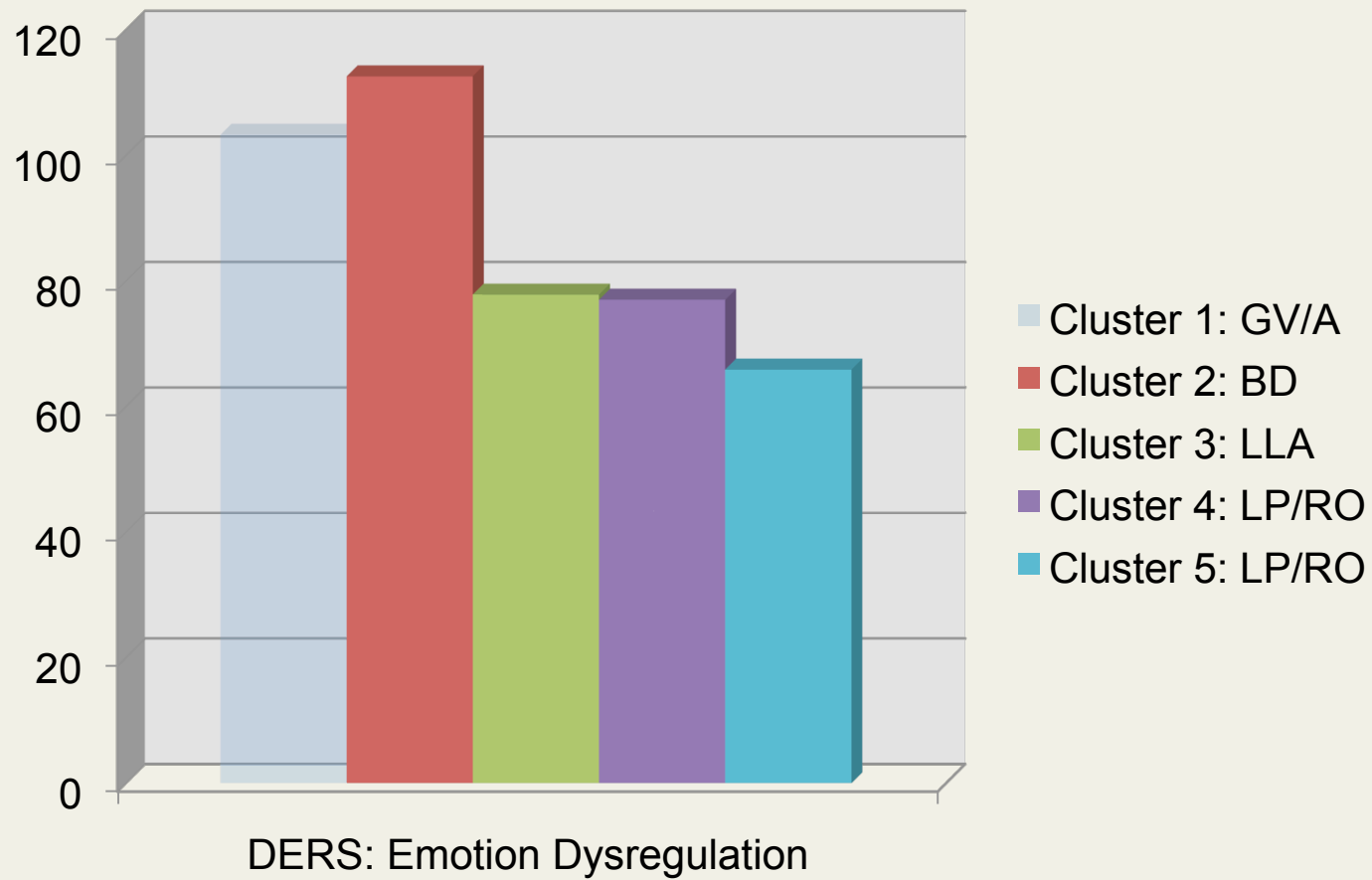
$F(4, 127) = 4.34^{**}$, partial $\eta^2 = .12$

Emotion Dysregulation



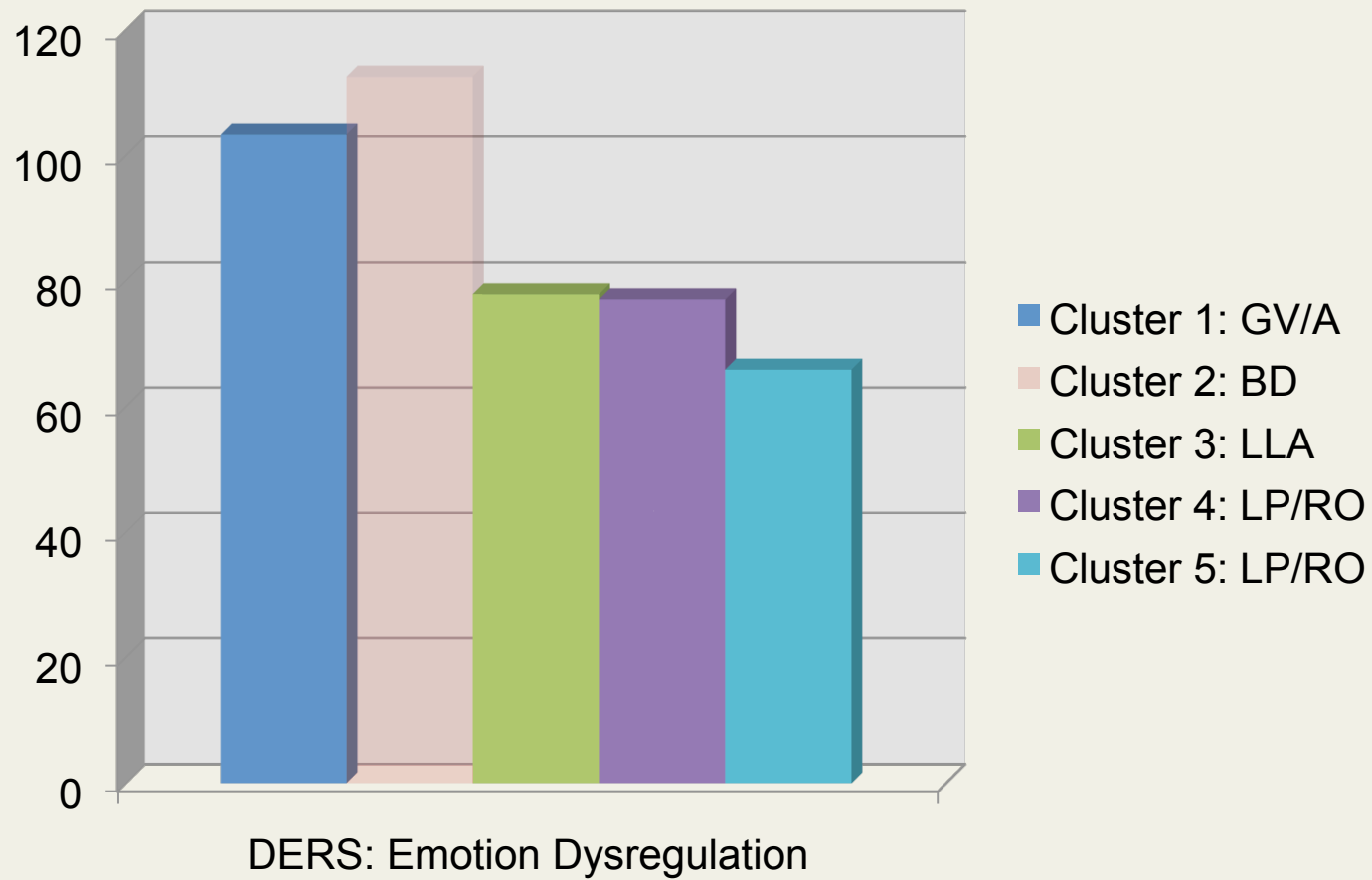
$F(4, 127) = 15.98^{**}$, partial $\eta^2 = .34$

Emotion Dysregulation



$F(4, 127) = 15.98^{**}$, partial $\eta^2 = .34$

Emotion Dysregulation



$F(4, 127) = 15.98^{**}$, partial $\eta^2 = .34$

Implications

- **Intervention efforts** with high-risk daters.
 - Interventions can reduce perpetration rates, interpersonal hostility, and trauma symptoms among high school daters¹.
- **Advancement of theory.**
 - Provides support for the validity of these characteristics (i.e., personality/psychopathology, violence generality, and severity of abuse) as factors that discriminate among a female, non-clinical sample of relationship aggressors.

¹Wolfe & Wekerle (2003)

Future Directions

- **More data** collection.
 - Limited power for cluster comparison analyses
- **Comparing men and women.**
 - Do the men in this sample look similar?
- Examining **group stability** longitudinally.
- Using this information in **developmental models** of relationship aggression.

Acknowledgments

- Society for Public Health Education and the Centers for Disease Control (SOPHE/CDC) Injury Prevention Fellowship, 2009
- Verizon/Hopeline Fellowship for Research in Domestic Violence, 2008-2009
- University of Georgia Lab Members:
 - Joan Jackson, Erin Hartzell, Brittany Baker, Hannah Barfield