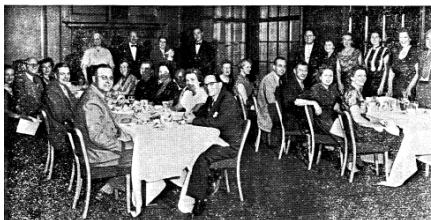


# CELEBRATING 60 YEARS OF SOPHE EXCELLENCE

M. Elaine Auld, MPH, CHES, Society for Public Health Education



SOCIETY OF PUBLIC HEALTH EDUCATORS  
GUESTS AT THE FIRST ANNUAL BANQUET OCTOBER 27, 1950



Society of Public Health Educators holds first meeting in St. Louis, MO;

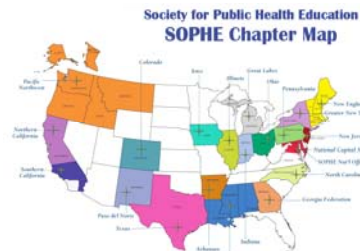
Clair E. Turner, President; 17 members and interim commission.



SOPHE incorporated in Rye, NY;

Health Education Monographs published;

first report on educational qualifications and functions of health educators.



Administrative support for SOPHE purchased from International Union for Health Education of the Public;

Changed name to Society for Public Health Education to emphasize public service;

Proliferation of chapters, beginning with San Francisco Bay Area chapter ('62).

1950

1952 - 1959

1960 - 1969



SOPHE/AAHE graduate-level competencies launched;  
IRS recognition as 501c3 organization;



first health education research agenda developed.

First SOPHE Midyear Meeting in Puerto Rico;  
Task Force on reorganization resulted in House of Delegates;  
Special Interest Groups started;  
SOPHE supports Bethesda conference on role delineation and credentialing.



SOPHE testifies at regional hearings on national health insurance;

first code of ethics published;  
published "Criteria and Guidelines for Baccalaureate Programs in Community Health Education."



Decreased experience requirements for membership which resulted in 1,175 members;  
office moved to San Francisco;  
hire James Lovegren as part-time Executive Director.

1990 - 1994

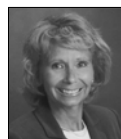
1980 - 1989

1976 - 1979

1970 - 1975



Offices moved to Washington, DC;



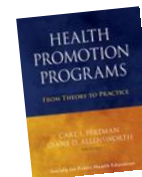
Elaine Auld hired as Executive Director;  
Health Education Quarterly moves to 6 issues and renamed Health Education & Behavior;  
first Health Education Advocacy Summit;  
first SOPHE website.



Health Promotion Practice launched;



SOPHE's "Campaign for the 21st Century" raises > \$200,000 and establishes student scholarships;  
SOPHE testifies on Capitol Hill;  
mission revised to include elimination of disparities and 6 resolutions adopted on health equity.



Four CDC/ATS/SDR cooperative agreements awarded;  
global competencies for health promotion published with IUHPE;  
overhaul of SOPHE bylaws;  
new SOPHE textbook;  
1,800 members, 20 chapters, \$2.2 million budget;



SOPHE website revamped for web 2.0.

1995 - 1999

2000 - 2005

2006 - 2010