
SOPHE LEADERSHIP

SOPHE 2014–15 OFFICERS

PRESIDENT: Kelly Bishop, MA, MCHES, FASHA
PRESIDENT-ELECT: Sandra Minor Bulmer, PhD, MS, CHES
SECRETARY: Rebecca H. Reeve, PhD, CHES
TREASURER: Cherylee Sherry, MPH
IMMEDIATE PAST PRESIDENT: Kelli R. McCormack Brown, PhD, CHES
TRUSTEE, 2014 ANNUAL MEETING: Sara L. Cole, PhD, MCHES
TRUSTEE, 2015 ANNUAL MEETING: Deborah A. Fortune, PhD, MCHES
TRUSTEE, ADVOCACY AND RESOLUTIONS:
 Amy Thompson, PhD, CHES
TRUSTEE, COMMUNICATIONS: Stacy Robison, MPH, MCHES
TRUSTEE, MEMBERSHIP AND LEADERSHIP: Mary Shaw, PhD, MCHES
TRUSTEE, PROFESSIONAL PREPARATION: Caile E. Spear, PhD, MCHES
TRUSTEE, PUBLICATIONS: Jean M. Breny, PhD, MPH
TRUSTEE, RESEARCH AND ETHICS:
 Rickie Orr Brawer, PhD, MPH, MCHES
TRUSTEE, SPECIAL INITIATIVES: Jay Bernhardt, PhD, MPH
STUDENT TRUSTEE: Demetrice Jordan, MA
DELEGATE TRUSTEE AND SPEAKER OF THE HOUSE:
 Barbara Hernandez, PhD, MCHES, CDE
DELEGATE TRUSTEE AND SPEAKER-ELECT:
 Suzanne Miro, MPH, MCHES
DELEGATE TRUSTEE: Eileen Huereque Aguilar, MS
DELEGATE TRUSTEE: Gayle T. Walter, PhD, MPH, CHES

CONGRATULATIONS TO THE 2015–2016 OFFICERS

PRESIDENT: Sandra Minor Bulmer, PhD, MS, CHES
PRESIDENT-ELECT: David A. Birch, PhD, MCHES
SECRETARY: Rebecca H. Reeve, PhD, CHES
TREASURER: Cherylee Sherry, MPH
IMMEDIATE PAST PRESIDENT: Kelly Bishop, MA, MCHES, FASHA
TRUSTEE, 2015 ANNUAL MEETING: Deborah A. Fortune, PhD, MCHES
TRUSTEE, 2016 ANNUAL MEETING: Keely Rees, PhD, MCHES
TRUSTEE, ADVOCACY AND RESOLUTIONS:
 Amy Thompson, PhD, CHES
TRUSTEE, COMMUNICATIONS: Stacy Robison, MPH, MCHES
TRUSTEE, MEMBERSHIP AND LEADERSHIP: Mary Shaw, PhD, MCHES
TRUSTEE, PROFESSIONAL DEVELOPMENT: Carl Fertman, PhD, MCHES
TRUSTEE, PROFESSIONAL PREPARATION: Caile E. Spear, PhD, MCHES
TRUSTEE, PUBLICATIONS: Michael C. Fagen, PhD, MPH
TRUSTEE, RESEARCH AND ETHICS:
 Rickie Orr Brawer, PhD, MPH, MCHES
TRUSTEE, SPECIAL INITIATIVES: Elizabeth Stevenson, MPH
STUDENT TRUSTEE: Melissa Shelton, MPA, MCHES
DELEGATE TRUSTEE AND SPEAKER OF THE HOUSE:
 Suzanne Miro, MPH, MCHES
DELEGATE TRUSTEE AND SPEAKER-ELECT: Brittan Wood, MPH, CHES
DELEGATE TRUSTEE: Gayle T. Walter, PhD, MPH, CHES
DELEGATE TRUSTEE: Allison Marron, MPH, CHES

SOPHE STAFF

CHIEF EXECUTIVE OFFICER:
 M. Elaine Auld, MPH, MCHES
ASSISTANT CHIEF EXECUTIVE OFFICER:
 Melanie J. Wells, MPH
CONTROLLER:
 Jean I. Taliaferro
SENIOR DIRECTOR, MEMBERSHIP AND MARKETING:
 Ramona Jackson, MPH
SENIOR DIRECTOR, PROFESSIONAL DEVELOPMENT:
 Dawn A. Haglund, MA
DIRECTOR, HEALTH EQUITY:
 Nicolette Warren, MS, MCHES, DrPH (c)

EDITORIAL AND PROJECT MANAGER:
 Deborah Gordon-Messer, MPH
EDITORIAL AND PROJECT MANAGER:
 Jeanine Robitaille, MS
HEALTH COMMUNICATIONS AND TECHNOLOGY MANAGER:
 Elaine Colwell, MA, CHES
OFFICE MANAGER & MEMBERSHIP COORDINATOR:
 Sandra Flegler
PROJECT COORDINATOR:
 Ankita Saxena, CHES



SOCIETY FOR PUBLIC HEALTH EDUCATION
10 G STREET, NE | SUITE 605 | WASHINGTON, DC 20002
PHONE: 202-408-9804
WWW.SOPHE.ORG

CONFERENCE OVERVIEW

SOCIETY FOR PUBLIC HEALTH EDUCATION 66TH ANNUAL MEETING

BLAZING A TRAIL for Health Education and Health Promotion

April 23–25, 2015 | Hilton and Executive Towers, Portland, Oregon

Welcome to SOPHE's 66th Annual Meeting! We invite you to engage, network and discover the latest health education and health promotion programs, paradigms, and strategies included in this conference! Select from over 220 scientific presentations and posters to expand your mind and portfolio with cutting-edge health education research, policy and practice.

CONFERENCE OBJECTIVES

This 2 ½ day conference will enable you to:

- Address current and future trends in health education by strengthening cross-sector collaboration for evidence-based improvements in health policies, programs and environments.
- Explore innovative practice and research aimed at improving health literacy, health behavior, health equity, and health policies for children, adolescents, and young adults.
- Incorporate innovative applications of health communications and technology in health education interventions that empower persons to make informed health decisions.
- Advocate for social justice and the reduction of health disparities experienced by various populations and communities due to social determinants of health, disease, and disability.
- Identify critical research, evaluation, and data needs to improve population health from domestic and global perspectives.

CONTINUING EDUCATION

An application has been approved to award Certified Health Education Specialists (CHES) and/or Master Certified Health Education Specialists (MCHES) up to 29.25 Category I Continuing Education Contact Hours (CECHs). A maximum of 19.75 Advanced-level CECHs are available. The National Commission for Health Education Credentialing, Inc. has approved SOPHE and its chapters as designated multiple event providers of CECHs in health education. SOPHE is approved by the National Board of Public Health Examiners as a provider of Certified in Public Health (CPH) Renewal Credits. This conference has been approved to award up to 29.25 CPH Renewal credits.

#SOPHE2015



@SOPHETWEETS

TABLE OF CONTENTS

Selected Conference Faculty	2
2015 SOPHE Award Recipients	3
Annual Meeting Highlights	5
Detailed Schedule	6
Plenary & Concurrent Abstracts	16
Posters	42
Author Index	52
Notes	58
Schedule At-A-Glance	62
Facility Map	65

BONUS: CONTINUING EDUCATION INCLUDED!

Your SOPHE 2015 Registration includes continuing education fees. If you did not designate in your online conference registration that you wish to receive continuing education credits, please visit the CE Desk in the Registration Area for more information about how to receive credits.

SELECTED CONFERENCE FACULTY



**KEYNOTE SPEAKER &
2015 SOPHE HONORARY FELLOW
LARRY COHEN, MSW**
FOUNDER & EXECUTIVE DIRECTOR
Prevention Institute



**LORIEN C. ABROMS,
SCD, MA**
PROFESSOR OF HEALTH
COMMUNICATION & MARKETING
School of Public Health & Health
Services, George Washington
University



**SOPHE 2014–2015 PRESIDENT
KELLY BISHOP,
MA, MCHES, FASHA**
PUBLIC HEALTH ADVISOR
Centers for Disease Control and
Prevention, National Center for
Chronic Disease Prevention and
Health Promotion



**AMERICA BRACHO,
MD, CDE, MPH**
EXECUTIVE DIRECTOR
Latino Health Access



**CLAIRE BRINDIS,
DRPH**
PROFESSOR, DIRECTOR INSTITUTE FOR
HEALTH POLICY STUDIES
University of California San Francisco
School of Medicine



**JENNY HAUBENREISER,
MA, FACHA**
EXECUTIVE DIRECTOR
STUDENT HEALTH SERVICES
Oregon State University



**WIZDOM POWELL,
PHD, MPH**
ASSISTANT PROFESSOR, DEPARTMENT
OF HEALTH BEHAVIOR
Gillings School of Global Public
Health, University of North Carolina–
Chapel Hill



**2015 ELIZABETH FRIES HEALTH
EDUCATION AWARD RECIPIENT
DAVID SLEET, PHD**
ASSOCIATE DIRECTOR FOR SCIENCE
Centers for Disease Control and
Prevention, National Center for Injury
Prevention and Control



**JESUS RAMIREZ-VALLES,
PHD**
PROFESSOR & DIRECTOR
Community Health Sciences
University of Illinois at Chicago

66TH ANNUAL MEETING DEDICATION

SOPHE's 66th Annual Meeting is dedicated posthumously to five SOPHE Past Presidents, each of whom blazed a trail for health education and health promotion and were honored as SOPHE Distinguished Fellows. You are invited to attend SOPHE's history session on Saturday, April 25 to learn more about these remarkable health education leaders.

HOWARD W. ENNES, JR., MPH, (1917–2014) was SOPHE's 8th president and a life-long advocate for justice and public health. After serving in the Navy, Howard established the Bureau of Health Education at the Equitable Life Assurance Society, where he eventually was promoted to vice-president with oversight of corporate social responsibilities and health and community service. Even after his retirement, Howard continued his community advocacy efforts and was celebrated on his 95th birthday as a "Local Peacemaker" for Mendocino, CA.

JEANNETTE J. SIMMONS, DRSC, MPH, (1920–2015) served as SOPHE's 13th president and had a distinguished career as an academician and researcher at Harvard, Dartmouth and UC Berkeley. Her portfolio focused on application of behavioral science theories in patient education, communication and adherence. Jeannette was a consultant to the World Health Organization and served on its board of directors. She had the foresight in the late 1980s to address healthy aging, and was principal investigator of a nationwide health promotion program for persons over 50, which was adopted by the American Association for Retired Persons (AARP) and the American Red Cross.

CLARENCE E. PEARSON, MPH, (1925–2014), SOPHE's 39th President, was an entrepreneur with a high-level of business savvy and acumen. He spent much of his career as the vice president and first director for health and safety education for the MetLife Foundation. Clarence was also associate director of the President's Committee on Health Education (1971–74), charged by President Nixon to "describe the 'state of the art' in health education in the United States and to define the nation's need for health education programs." He served at the United Nations, AARP, and many other organizations into his retirement.

FLORENCE B. FIORI, PHD, MPH, (1927–2014) was elected SOPHE's 23rd President in 1972, when she began her federal career at the New York City Field Office of the Department of Health, Education, and Welfare. She was promoted HHS Director of the Bureau of Health Facilities and was the first woman to lead a bureau of the Public Health Service. In 1979, she became a charter member of, and one of the first women in, the Senior Executive Service, a keystone of the Civil Service Reform Act of 1978. Florence had successive major positions with the Health Resources and Services Administration, for which she was honored in 1994 with the Presidential Rank Award of Meritorious Executive by President Clinton.

KAREN DENARD GOLDMAN, PHD, MCHES, (1949–2014), SOPHE's 52nd President, was a consummate public health education practitioner, trainer, teacher, researcher, manager, executive, author, and motivational speaker. Her 40-year career spanned employment in local health agencies, non-profit organizations, universities, hospitals, private industry, and as an entrepreneur. Especially devoted to her students, Karen was honored with SOPHE's Mentor Award in 2006. She was associate editor of *Health Promotion Practice* for more than a decade, for which she co-authored more than 75 "Tools of the Trade" – concise and pithy job aids for health educators.

2015 AWARD RECIPIENTS

Get your ticket for the SOPHE Awards Gala held in the Hilton's Skyline Room on April 24, 7:00–10:00pm. Below are the 2015 Award Recipients who will be honored.

DISTINGUISHED FELLOW AWARD

The Distinguished Fellow Award is the highest recognition to a member given by SOPHE. It honors members who have made significant and lasting contributions to the Society and to the health education field.

MOHAMMAD R. TORABI, PHD, MPH, INDIANA UNIVERSITY SCHOOL OF PUBLIC HEALTH-BLOOMINGTON

HONORARY FELLOW AWARD

The Honorary Fellow Award is SOPHE's highest recognition to a non-member given by SOPHE. It honors an individual who has made significant and lasting contributions to health education and public health.

LARRY COHEN, MSW, FOUNDER AND EXECUTIVE DIRECTOR OF PREVENTION INSTITUTE

KAREN DENARD GOLDMAN MENTOR AWARD

This award recognizes an individual in an academic or practice setting who has made a significant contribution to the preparation and/or performance of health educators and has successfully forged the link between research and practice.

DAVID K. LOHRMANN, PHD, MCHES, INDIANA UNIVERSITY SCHOOL OF PUBLIC HEALTH-BLOOMINGTON

PROGRAM EXCELLENCE AWARD

This award recognizes outstanding health education programs in existence for at least three years.

SALUD FAMILIAR, OFFERED BY SAN JOSE STATE UNIVERSITY AND MCKINLEY ELEMENTARY SCHOOL

HORIZON AWARD

This award recognizes early career health educators who have distinguished themselves as promising health educators through leadership, creativity, involvement in the profession, and health education practice in their setting.

ADAM P. KNOWLDEN, PHD, MBA, CHES, THE UNIVERSITY OF ALABAMA

TECHNOLOGY AWARD

This award recognizes individuals or groups who have distinguished themselves by applying innovative, non-commercial technology in health education that can be broadly disseminated and has the potential to make a significant impact in health education practice.

LET'S GET HEALTHY!, OREGON HEALTH & SCIENCE UNIVERSITY

THE DELBERT OBERTEUFFER SCHOLARSHIP

This award, conferred by SOPHE on behalf of the Foundation for the Advancement of Health Education (FAHE), recognizes doctoral students for their academic achievement; potential for advancing the health of children and youth; and professional goals.

ALEXANDRA DESORBO, MPH, COLUMBIA UNIVERSITY—TEACHER'S COLLEGE

THE MARION B. POLLOCK FELLOWSHIP

This award, conferred by SOPHE on behalf of the Foundation of the Advancement of Health Education of Health Education (FAHE), recognizes a talented and committed teacher in an elementary, middle, or high school for graduate study at the master's level.

JESSICA HOAG, AMERICAN COLLEGE OF EDUCATION

SARAH MAZELIS PAPER OF THE YEAR AWARD

This award recognizes authors whose peer-reviewed article has been published in SOPHE's Health Promotion Practice journal in the last year and has made significant contributions to advancing the practice of health education and health promotion programs, policy, or professional preparation.

A METHOD FOR BUILDING EVALUATION COMPETENCY AMONG COMMUNITY-BASED ORGANIZATIONS. CHERYL M. KELLY, PHD, MPH; JESSI LAROSE, MPH; DARCELL P. SCHARFF, PHD, MPH. *HEALTH PROMOTION PRACTICE*. MAY 2014 VOL. 15, NO. 3, 431–437.

LAWRENCE W. GREEN PAPER OF THE YEAR AWARD

This award recognizes authors whose peer-reviewed article has been published in SOPHE's Health Education & Behavior journal in the last year and has made significant contributions to understanding health education, health status, and strategies to improve social and behavioral health.

DEVELOPING BEHAVIORAL THEORY WITH THE SYSTEMATIC INTEGRATION OF COMMUNITY SOCIAL CAPITAL CONCEPTS. LAURA J. SAMUEL, PHD; YVONNE COMMODORE-MENSAH, RN; CHERYL R. DENNISON HIMMELFARB, PHD, APN. *HEALTH EDUCATION & BEHAVIOR*. AUGUST 2014 VOL. 41, NO. 4, 359–375.

GRADUATE STUDENT RESEARCH PAPER AWARD

This award is designed to foster quality graduate student research and provide a mechanism by which to recognize outstanding graduate students for creative and innovative research.

JESSICA L. KING, MS, CHES, UNIVERSITY OF FLORIDA

THE VIVIAN DRENCKHAHN STUDENT SCHOLARSHIP AWARD

This student scholarship provides support to both undergraduate and graduate level full-time students in their pursuit of educational and professional development in health education.

SHEMEKA Y. NEELY, MA, UNIVERSITY OF CINCINNATI
PAUL A. SANTOS, BS, CHES, MONTCLAIR STATE UNIVERSITY

SOPHE/CDC INJURY PREVENTION FELLOWSHIP

This one-year fellowship recognizes, assists and trains graduate students working on unintentional injury prevention projects from the perspective of health education or behavioral sciences.

ELIZABETH NESOFF, MPH, CHES, JOHNS HOPKINS UNIVERSITY SCHOOL OF PUBLIC HEALTH
DOUGLAS ROEHLER, MPH, UNIVERSITY OF MICHIGAN SCHOOL OF PUBLIC HEALTH

SOPHE PRESIDENTIAL CITATIONS

The following individuals have provided dedicated service to SOPHE and are awarded a Presidential Citation for their contributions to SOPHE excellence.

SUE BALDWIN, PHD, MCHES, BUFFALO PUBLIC SCHOOLS
LYDIA BURAK, PHD, CHES, BRIDGEWATER STATE UNIVERSITY
ELLEN M. CAPWELL, PHD, MCHES, OTTERBEIN UNIVERSITY
CAROL COX, PHD, MCHES, TRUMAN STATE UNIVERSITY
DIXIE DENNIS, PHD, MCHES, AUSTIN PEAY STATE UNIVERSITY
EVA DOYLE, PHD, MCHES, BAYLOR UNIVERSITY
STEPHEN GAMBESCIA, PHD, MED, MBA, MHUM, MCHES, DREXEL UNIVERSITY
CARL HANSON, PHD, MCHES, BRIGHAM YOUNG UNIVERSITY

2015 AWARD RECIPIENTS

DIANNE KERR, PHD, MCHES, KENT STATE UNIVERSITY
MARK KITTLESAN, PHD, FAAHB, FAAHE, NEW MEXICO
STATE UNIVERSITY
LINDA LYSOBY, MS, MCHES, CAE, NATIONAL COMMISSION FOR HEALTH
EDUCATION CREDENTIALING, INC.
JAMES F. MCKENZIE, PHD, MPH, MCHES, BALL STATE UNIVERSITY
TYLER WATSON, PHD, MCHES, BRIGHAM YOUNG UNIVERSITY-IDAHO

ANNUAL MEETING STUDENT SCHOLARSHIP RECIPIENTS

SOPHE is proud to award twenty-two scholarships to enable the following students to attend this year's meeting. The scholarships are provided through SOPHE's "Campaign for the 21st Century" fund.

SARA R. ADAMS, COASTAL CAROLINA UNIVERSITY
VALISHA ANDRUS, BA, MONTCLAIR STATE UNIVERSITY
SARA BALL, MA, UNIVERSITY OF MISSISSIPPI
JACLYN CARPENTER, BS, CHES, UNIVERSITY OF CINCINNATI
AMY CHARLOT, WESTERN WASHINGTON UNIVERSITY
*ALEXANDRA DESORBO, MPH, COLUMBIA UNIVERSITY—
TEACHERS COLLEGE
NATALIE E. GRINSVALDS, CHES, INDIANA UNIVERSITY
*LILA MURPHY GUTUSKY, MED, WAYNE STATE UNIVERSITY
ERIKA HENRY, UNIVERSITY OF CINCINNATI

RACHEL MAHAS, MS, MPH, UNIVERSITY OF TOLEDO
*GRACE MOXLEY, BS, COLLEGE OF CHARLESTON
*JASMINE PAUL, PHD, FORT VALLEY STATE UNIVERSITY
*JONI ROBERTS, CHES, MAT, LOMA LINDA UNIVERSITY
TARA ROSE STRATINSKY, EASTERN ILLINOIS UNIVERSITY
EMILY J. VAN WASSHENOVA, MS, UNIVERSITY OF TOLEDO

* TOP 5 STUDENT POSTER WINNER

21ST CENTURY SCHOLARSHIPS IN HONOR OF MARIAN HAMBURG

SOPHE is proud to award the following 21st Century scholarships in honor of the mentorship provided by Marian Hamburg, who passed away in 2013.

ERIKA BRO, WESTERN WASHINGTON UNIVERSITY
KIMBERLY GREEN, CHES, EMORY UNIVERSITY
TAYLOR LACEY, BS, UNIVERSITY OF CINCINNATI
JESSICA L. KING, MS, CHES, UNIVERSITY OF FLORIDA
JESSICA SLOAN KRUGER, RYT, BS, MSHE, UNIVERSITY OF TOLEDO
SARAH ELIZABETH PEMBER, BA, MT, THE UNIVERSITY OF ALABAMA
MELISSA WEINSTEIN, INDIANA UNIVERSITY



SOPHE SALUTES OUR CHARTER AFFILIATE ORGANIZATION MEMBERS!



**THESE ORGANIZATIONS HAVE INVESTED IN PROMOTING THE HEALTH EDUCATION AND HEALTH PROMOTION
PROFESSION BY PARTNERING WITH SOPHE AS AFFILIATE MEMBERS:**

THE NATIONAL COMMISSION FOR HEALTH EDUCATION CREDENTIALING, INC.
WHITEHALL, PA

IQ SOLUTIONS
ROCKVILLE, MD

SOUTHERN CONNECTICUT STATE UNIVERSITY, DEPARTMENT OF HEALTH
NEW HAVEN, CT

UNIVERSITY OF NORTHERN IOWA
CEDAR FALLS, IA

**BECOME A CHARTER AFFILIATE ORGANIZATION MEMBER TODAY!
CONTACT SOPHE AT 202-408-9804 OR INFO@SOPHE.ORG.**

ANNUAL MEETING HIGHLIGHTS

SOPHE & ESG OPENING RECEPTION

GENEROUSLY SUPPORTED BY INDIANA UNIVERSITY DEPARTMENT OF APPLIED HEALTH SCIENCE

Welcome to Portland! Join us on Thursday, April 23, 5:00–7:00 pm in the Exhibit Hall, Grand Ballroom II (Ballroom Level) for an evening of food, networking and fun at the Opening Social! Connect with colleagues old and new, and welcome students and first-time attendees to the SOPHE conference. Also take this opportunity to learn about the latest resources and services from our exhibitors and participate in the Scavenger Hunt to win great raffle prizes!

WELCOME 1ST TIME ATTENDEES!

SOPHE extends a special welcome to all first-time conference attendees wearing a #1 on their badge! Meeting veterans, please introduce yourself and welcome them to the SOPHE family!

SOPHE SNAPSHOT

New to SOPHE? You are invited to the SOPHE Snapshot on Thursday, April 23, 7:00–8:30am. Join us to hear about SOPHE's programs, benefits and how you can get involved. Ideal for new members and first-time meeting attendees.

AWARDS GALA

Join your colleagues in honoring SOPHE's 2015 award winners on Friday, April 24, 7:00–10:00pm in the Hilton's Skyline Room on the 23rd Floor. Come celebrate SOPHE's own trailblazers in an evening of western fun, complete with a themed photo booth. Enjoy a festive light fare reception with cash bar followed by the awards ceremony. A limited number of tickets for this sell-out event will be available at the SOPHE Registration Desk.

HOSPITALITY TABLE

Get the scoop on things to do and see in Portland! Stop by the Hospitality Table, located near Registration and staffed by local volunteers.

SOPHE COMMUNITIES OF PRACTICE (COP) NETWORKING ROUNDTABLES

SOPHE CoP roundtables will be held on Thursday, April 23, 12:15–1:15pm in the Grand Ballroom I (Ballroom Level). This is a great opportunity to connect with individuals who share similar interests. Topics include: Children/Adolescent Health; Medical Care/Patient Education; Health Communications/Social Marketing; Health Disparities; Healthy Aging; Emergency Preparedness; Environmental Health; Worksite Health; Anthropology; Nutrition; Tobacco; Faculty; Student/New Professionals; and Global Health.

SOPHE ANNUAL ALL-MEMBER BUSINESS MEETING

Join us on Friday, April 24, 11:45am–12:45pm, in the Grand Ballroom I (Ballroom Level) for SOPHE's All Member Business Meeting. Bring your lunch, learn about our recent accomplishments and future initiatives, and welcome your newly-elected members of the Board of Trustees.

FOOD & BEVERAGE OPTIONS

To keep registration fees as low as possible, meals are on your own. **Choose from various hotel "cash & carry" options** or the many delis and restaurants in the downtown Portland area.

POSTER GALLERY

Plan to view and interact with the authors of over 100 posters that are on display in the Grand Ballroom II (Ballroom Level) during the conference. Thursday, Posters Group G, will be on display from 8:30am–7:00pm with authors available for discussion from 12:30–1:30pm. Friday, Posters Group H, will be on display from 8:30am–5:30pm with authors available for discussion from 11:30am–12:30pm. Saturday, Poster Group J, are all our Student Posters (including a section of Eta Sigma Gamma poster selections). These Student Posters will be on display from 7:30am–12:00pm with authors available for discussion from 7:30–8:30am. **CECHs credits available!**

EARLY RISERS

Three Early Riser Sessions will be offered on Friday morning, April 24, 7:00–8:30am. Get the latest on Ebola & Emergency Preparedness, Health Education Teaching Techniques or join the Technology Roundtable to see the latest trends and tools for promoting and improving health education! CECHs credits available.

STUDENT WORKSHOP

On Wednesday, April 22nd 3:00–5:00pm, we have a workshop designed specifically for students. Dr. Charles Ridley, a licensed psychology and Professor in the Department of Educational Psychology at Texas A&M University, will lead an informative and engaging skill building session on behavioral interviewing and how you can best be prepared for not only the interview process, but for the new job.

EXHIBIT HALL & RAFFLE

Please join SOPHE in welcoming and thanking the 2015 Exhibitors by visiting their tables in the Grand Ballroom Foyer and Grand Ballroom II (Ballroom Level) on Thursday and Friday. Peruse their publications, tools, information and latest technological innovations from an array of organizations and universities. Participate in the exhibitor Scavenger Hunt on Thursday—turn in your form at the Opening Reception to be eligible for the great raffle prizes!

WELLNESS CHALLENGE

Join the Walk Challenge during the meeting! Visit the Eta Sigma Gamma exhibit table in the Grand Ballroom Foyer for full details and to register! Giveaways and prizes available!

STUDENT CASE STUDY COMPETITION

SOPHE is proud to sponsor another student case study competition for undergraduate health education students. The winning team will be announced following the Thursday afternoon plenary session. Come and cheer on the winners!

SAFETY & SECURITY

Please keep an eye on your personal items and do not leave items unattended in meeting rooms or common areas. Fire and safety information is detailed in the directory in your hotel room. Consult a hotel staff member when planning to walk in any unfamiliar areas outside the hotel. Remember to remove your name badge when you leave the hotel.

MEDICAL EMERGENCIES

Contact the hotel or a SOPHE staff person if you need assistance locating a doctor in the area. If you need immediate help, pick up any hotel courtesy phone. The hotel will answer and assist you. Or dial 9-1-1.

DETAILED SCHEDULE



WELCOME ETA SIGMA GAMMA

ESG

SOPHE is proud to welcome ESG as a partner in helping to plan and support this conference. Be sure to check out special ESG meetings and sessions throughout the program.

CASH

Child, Adolescent & School Health

ESG

Eta Sigma Gamma

CID

Culture, Inequity, & Disparities

PSA

Policy, Systems Change & Advocacy

TECH

Health Education Technology

WKSP

Skill-Building Workshop

▲

Session is approved for advanced-level credit

TUESDAY, APRIL 21

8:00AM - 5:00PM

SCRIPT (The Smoking Cessation and Reduction in Pregnancy Treatment) Workshop

Room: Skyline III

Presenter: Richard Windsor, PhD, Professor Emeritus, The George Washington University School of Public Health and Health Services

4:00PM – 7:00PM

House of Delegates Board Meeting, Part I

Room: Salon III

WEDNESDAY, APRIL 22

8:00AM – 5:00PM

Student Case Study Student Competition

Room: Skyline III

8:00AM – 10:30AM

House of Delegates Board Meeting, Part II

Room: Salon I & II

11:00AM – 6:00PM

SOPHE Board of Trustees Meeting

Room: Salon I & II

1:00PM – 6:00PM

Registration/CE Desk Open

Room: Grand Ballroom Foyer

2:00PM – 4:00PM

WKSP

Pre-Conference Workshop W1

PUBLISH OR PERISH: DEMYSTIFYING THE PEER REVIEW PROCESS

Moderator: Miguel Perez, PhD, MCHES

Room: Galleria North

Presenters: John P. Allegrante, PhD, Editor-in-Chief, Health Education & Behavior; Dixie Dennis, PhD, Editor, Journal of Health Education Teaching Techniques; Lynne Edmondson, PhD, Editor, Alabama State Association for Health, Physical Education, Recreation, and Dance Journal; Melissa Grim, PhD, MCHES, Deputy Editor, Health Promotion Practice; Brenda Jamerson, PharmD, Editor, American Journal of Health Studies; and E. Lisako J. McKyer, PhD, Editor, The Health Education Monograph Series & Associate Editor, American Journal of Health Education

2:30PM – 5:00PM

WKSP

Pre-Conference Workshop W2

ADVOCACY STRATEGIES FOR THE 21ST CENTURY

Moderator: Jeff Goodman, MPH

Room: Galleria South

Presenter: Fred Sainz, Vice President, Human Rights Campaign

3:00PM – 5:00PM

Department Heads Meeting (invite only)

Moderator: Collins Airhienbuwa, PhD, MPH

Room: Forum Suite

3:00PM – 5:00PM

WKSP

Student Workshop: Navigation Essentials for School & Workplace: From Winning Resume to Interview: Telling Your Story

Moderator: Melissa Shelton, MPA, MCHES

Room: Council Suite

Presenter: Charles Ridley, PhD, Texas A&M University

4:00PM – 6:00PM

Exhibitor Set-up

Room: Grand Ballroom II

5:00PM – 7:00PM

WKSP

Pre-Conference Workshop W3

FIRST STEPS TOWARD STANDALONE BACCALAUREATE ACCREDITATION

Moderator: Randy Cottrell, DEd, MCHES

Room: Galleria North

Presenters: Laura Rasar King, MPH, MCHES, Council on Education for Public Health; Nicole Williams, Council on Education for Public Health

5:00PM – 7:30PM

Pedagogy in Health Promotion Editorial Meeting

Room: Studio Suite

6:30PM – 8:00PM

SOPHE Board of Trustees Orientation

Room: Forum Suite

DETAILED SCHEDULE

THURSDAY, APRIL 23

6:30AM – 6:00PM

Registration/CE Desk Open

Room: Grand Ballroom Foyer

7:00AM – 8:30AM

SOPHE SNAPSHOT

Room: Galleria North

7:00AM – 8:00AM

SOPHE Professional Development Committee

Room: Studio Suite

7:30AM – 8:30AM

Poster Group G Set-Up

Room: Grand Ballroom II

8:00AM – 7:00PM

Exhibit Hall Open

Room: Grand Ballroom II

8:15AM – 8:45AM

Welcome, Opening Remarks and Dedication of the 66th Annual Meeting

Room: Grand Ballroom I

*Deborah Fortune, PhD, MCHES, 2015 Annual Meeting Trustee;
M. Elaine Auld, MPH, MCHES, SOPHE Chief Executive Officer;
Lillian Shirley, BSN, MPH, MPA, Public Health Director, Oregon Health Authority*

8:45AM – 9:15AM

PSA



SOPHE Presidential Address: Leadership Strategies to Advance Health Education

Moderator: Deborah Fortune, PhD, MCHES, North Carolina Central University

Room: Grand Ballroom I

Kelly Bishop, MA, MCHES, FASHA, SOPHE President

9:15AM – 10:00AM

PSA



Plenary I: Keynote Address: Working Upstream for Health Improvement

Moderator: Deborah Fortune, PhD, MCHES, North Carolina Central University

Room: Grand Ballroom I

Larry Cohen, MSW, Founder & Executive Director, Prevention Institute and SOPHE 2015 Honorary Fellow

10:00AM – 10:30AM

BREAK: Pick up refreshments while visiting Exhibitors

Room: Grand Ballroom II and Foyer

10:30AM – 11:30AM

SOPHE Publications Committee

Room: Studio Suite

10:30 AM – 12:00PM

CONCURRENT SESSIONS A

PSA

A1: Training and Professional Development in Health Education

Moderator: Leah Neubauer, EdD, MA

Room: Galleria North

EVALUATION OF A TRAINING PROGRAM IN HEALTH POLICY FOR PUBLIC HEALTH PERSONNEL

Presenter: Jim Stimpson, PhD, University of Nebraska Medical Center

DEMYSTIFYING HEALTH ADVOCACY USING A LAYERED CURRICULUM APPROACH THROUGHOUT AN UNDERGRADUATE COMMUNITY HEALTH EDUCATION PROGRAM

Presenter: Heidi Hancher-Rauch, PhD, CHES, University of Indianapolis

HEALTH EDUCATION PRACTICE ANALYSIS (HESPA-2015): RE-VERIFYING ESSENTIAL PROFESSIONAL ROLES/ RESPONSIBILITIES, COMPETENCIES, AND SUB-COMPETENCIES

Presenter: Dixie Dennis, PhD, MCHES, Austin Peay State University

TRAIL-BLAZING THE FUTURE OF PUBLIC HEALTH EDUCATION IN THE 21ST CENTURY: THE ROLE OF COMMUNITY COLLEGES

Presenter: David Lohrmann, PhD, CHES, Indiana University

CASH

PSA

A2: Addressing the Needs of Future Generations: School-Based Health Education Interventions

Moderator: Amy Thompson, PhD, CHES

Room: Salon I – III

BODY IMAGE IMPLICATIONS FOR PHYSICAL ACTIVITY IN ADOLESCENTS

Presenter: Sarah Blackstone, MPH, University of Illinois Urbana Champaign

STRONGER TOGETHER: 2014 MISSISSIPPI SCHOOLS KINDERGARTEN HAND WASHING CAMPAIGN— A COLLABORATIVE SUCCESS

Presenter: Nykiconia Preacely, DrPH, MPH, CPH, Mississippi State Department of Health

IDENTIFYING AND ADDRESSING STRESS-RELATED BEHAVIORS IN CHILDREN OF VETERANS WITH POSTTRAUMATIC STRESS DISORDER

Presenter: Lorette Oden, MBA, PhD, Western Illinois University

NATIONAL PTA AND SAFE ROUTES TO SCHOOL FIRE UP YOUR FEET PROGRAM

Presenter: Heather Parker, MS, CHES, National PTA

CID

CASH

A3: Going Global: International Health Education Research and Practice Initiatives

Moderator: Miguel Perez, PhD, MCHES

Room: Galleria South

SUICIDE BEHAVIORS: A COMPARATIVE STUDY AMONG SECONDARY SCHOOL STUDENTS IN CHINA, TAIWAN, AND THAILAND

Presenter: Noy Kay, PhD, Indiana University Bloomington

THE ROLE OF SOCIAL NORMS IN DIET AND EXERCISE BEHAVIOUR: FINDINGS FROM A UNIVERSITY RESIDENTIAL COLLEGE IN SINGAPORE

Presenter: Shelley Jung, HBSc, MScPH, National University of Singapore

SOUTH AFRICA IMMERSION EXPERIENCE: A WORLD OF OPPORTUNITIES

Presenter: Mary Ann Middlemiss, PhD, RN, Syracuse University

NUTRITION EDUCATION IN DISADVANTAGED BARRIOS IN CONSUELO DOMINICAN REPUBLIC

Presenter: Carol Nixon, PhD, Vanderbilt University

DETAILED SCHEDULE

TECH **PSA** **A4: Technology for Health Education: Reaching People Where They Are**

Moderator: Maria Fernandez, PhD

Room: Grand Ballroom I

APPROACHES TO PROMOTING AI/AN ADOLESCENT HEALTH THROUGH HARNESSING SOCIAL MEDIA, SOCIAL MARKETING, AND TECHNOLOGY-BASED INTERVENTIONS

Presenter: Stephanie Craig Rushing, PhD, MPH, Northwest Portland Area Indian Health Board

TECHNOLOGY AND HEALTH EDUCATION: HOW THEY CAN WORK TOGETHER TO POSITIVELY IMPACT HEALTH BEHAVIORS

Presenter: Jean Gould, BS, MaineHealth Learning Resource Center

#HASHTAGS @ HEALTH: THE USE OF INNOVATIVE TECHNOLOGY TO ANALYZE SOCIAL MEDIA DISCLOSURE RELATED TO DIVERSE HEALTH TOPICS

Presenter: Kimberly Parker, PhD, MPH, MCHES, Texas Woman's University

SOCIAL MEDIA RESEARCH: ETHICAL CONCERNS FOR PUBLIC HEALTH

Presenter: Rickie Brawer, MPH, PhD, MCHES, Thomas Jefferson University and Hospitals

PSA **A5: Working Well: Employee Health Promotion and Policies**

Moderator: Sandy Bulmer, PhD, MS, CHES

Room: Forum Suite

WORKPLACE HARASSMENT AND BULLYING IN THE UNITED STATES: RESULTS FROM THE NATIONAL HEALTH INTERVIEW SURVEY

Presenter: Jagdish Khubchandani, MBBS, PhD, Ball State University

BLAZING A TRAIL TO ORGANIZATIONAL WELLNESS WITH HEALTHY BEVERAGE POLICIES

Presenter: Jaime Flores, MPH, RD, Santa Clara County Public Health Department

FIREFIGHTER HEALTH: A REVIEW OF LITERATURE INVESTIGATING FIREFIGHTER HEALTH IN THE UNITED STATES FOCUSING ON OVERWEIGHT, OBESITY, PHYSICAL ACTIVITY, NUTRITION, AND JOB INJURY

Presenter: Kayla Lindsay, MA, CHES, The University of Alabama

CLIMBING THE APPALACHIA TRAIL TO IMPROVE NON-BENEFITED EMPLOYEES FLU INOCULATION RATES: A PILOT STUDY

Presenter: Cynthia Karlsson, MPH, PhD(c), Virginia Tech University

11:30AM – 1:30PM

ESG **ESG Board Meeting**

Room: Skyline IV

11:30AM – 1:00PM

Health Promotion Practice Editorial Meeting

Room: Skyline III

12:00PM – 1:30PM

Lunch on your own

12:15PM – 1:15PM

SOPHE Advocacy Committee

Room: Studio Suite

SOPHE Finance Committee

Room: Council Suite

SOPHE Communities of Practice Roundtables

Room: Grand Ballroom I

12:30PM – 1:30PM

Posters with Presenters – Group G

Room: Grand Ballroom II (Exhibit Hall)

1:30PM – 3:00PM

CONCURRENT SESSIONS B

CID **PSA** **B1: Faith-Based Community Interventions: Mining Evidence for Efficacy**

Moderator: Regina McCoy Pulliam, MPH, MCHES, CHC

Room: Salon I – III

A MODEL FOR PARTNERING WITH RELIGIOUS ORGANIZATIONS FOR SEXUALITY EDUCATION

Presenter: Alexa Juhl, MA, Iowa Department of Public Health

LESSONS LEARNED FROM TWO FAITH-BASED HIV PREVENTION PROGRAMS FOR YOUNG ADULT & ADULT SINGLE AFRICAN AMERICAN WOMEN

Presenter: Danielle Lambert, MPH, CHES, Emory University

EXAMINING THE IMPACT OF PARENTAL PROCESSES, RELIGIOSITY, AND SPIRITUALITY AS PROTECTIVE FACTORS AGAINST RISKY SEXUAL BEHAVIORS AMONG AFRICAN AMERICAN ADOLESCENTS

Presenter: Afekwo Mary Ukuku, MPH, University of Georgia

INNOVATIVE SOLUTIONS FOR THE BLACK CHURCH: RISK REDUCTION AND MAINTENANCE OF HEALTHY SEXUAL BEHAVIORS

Presenter: LaShun Robinson, PhD, Emory University

CASH **B2: Promoting Safety and Health among Children and Adolescents**

Moderator: Sara Cole, PhD, MCHES

Room: Forum Suite

UNDERSTANDING STUDENTS' INTENT TO INTERVENE IN DATING VIOLENCE AND SEXUAL ASSAULT RISK SITUATIONS: USE OF THE THEORY OF PLANNED BEHAVIOR

Presenter: Jill Hoxmeier, MPH, PhD(c), Oregon State University

USING SOCIAL AND BEHAVIOR CHANGE APPROACHES TO ADDRESS VIOLENCE AGAINST CHILDREN: DEVELOPING A SET OF GLOBAL BEST PRACTICES

Presenter: Carmen Cronin, MPH, Drexel University

WATER SAFETY FOR CHILDREN AND TEENS: LOW-COST LIFE JACKET SALES AND PROMOTION

Presenter: Sarah Stempfski, MPH, MCHES, CPST, Seattle Children's Hospital

URBAN TEACHERS' REPORTED PREVALENCE OF BULLYING IN THE MIDDLE SCHOOL SETTING

Presenter: Dena Simmons, MEd, MA, EdD, CHES, Yale University

CID **CASH** **B3: Advancing Health on College Campuses**

Moderator: Caile Spear, PhD, MCHES

Room: Galleria South

THE IMPORTANCE OF SEXUAL VALUES IN IDENTITY DEVELOPMENT: A QUALITATIVE EXPLORATION IN A SEXUALLY DIVERSE SAMPLE

Presenter: Stephanie Bennett, PhD, University of Kentucky

DETAILED SCHEDULE

FACTORS ASSOCIATED WITH COLLEGE STUDENTS' INTENTIONS TO VACCINATE THEIR DAUGHTERS AGAINST HPV: PROTECTING THE NEXT GENERATION

Presenter: Kelly Wilson, PhD, MCHES, Texas A&M University

EXPLORING BARRIERS RELATED TO HIV TESTING AMONG COLLEGE STUDENTS

Presenter: Emily Earnest, BS, MPH, CHES, Georgia Southern University

WHEN WILL COLLEGE STUDENTS INTERVENE IN HARMFUL SITUATIONS? BASELINE DATA FROM A CAMPUS-WIDE BYSTANDER INTERVENTION INITIATIVE

Presenter: Amanda Mabry, MPH, The University of Texas at Austin

PSA
CID



B4: Evaluation in Health Education: Improving Professional Competencies
SPONSORED BY NATIONAL IMPLEMENTATION AND DISSEMINATION FOR CHRONIC DISEASE PREVENTION PROJECT*

Moderator: Kelly Bishop, MA, MCHES, FASHA

Room: Grand Ballroom I

ADAPTATION AND EVALUATION OF AN EVIDENCE-BASED BIOSPECIMEN EDUCATION PROGRAM IN SIX POPULATIONS GROUPS: THE CANCER DISPARITIES RESEARCH NETWORK CANCER 101

Presenter: Carrie Norbeck, MPH, CHES, Fox Chase Cancer Center

HOW TO CONDUCT PRACTICAL IMPACT EVALUATIONS: STRATEGIES AND LESSONS FROM TWO HEALTH PROMOTION PROGRAMS

Presenter: Robert LaChausse, PhD, California Baptist University

PIONEERING SCHOOL WELLNESS: BEST PRACTICES FROM TEN YEARS OF IMPLEMENTING PROJECT HEALTHY SCHOOLS

Presenter: Jean DuRussel-Weston, RN, BSN, MPH, CHES, University of Michigan

STRENGTHENING HEALTH EDUCATOR EVALUATION SKILLS THROUGH ACTION LEARNING

Presenter: Michael Fagen, PhD, MPH, Northwestern University

PSA
CID

B5: Communicating and Advocating for Health Education

Moderator: Nicolette Warren, MS, MCHES, DrPH (c)

Room: Galleria North

WHAT'S ADVOCACY GOT TO DO WITH IT? EXAMINING THE IMPACT OF ADVOCACY SELF-EFFICACY AMONG HEALTH EDUCATORS

Presenter: Kadi Bliss, PhD, CHES, Austin Peay State University

PUBLIC POLICY AND ADVOCACY INVOLVEMENT BY HEALTH EDUCATION FACULTY AND HEALTH EDUCATORS

Presenter: Emily Van Wasshenova, MS, University of Toledo

CULTURE DIVERSITY AND HEALTH: PLANNING ADVOCACY FROM AFAR

Presenter: Mary Jane Tremethick, PhD, RN, Northern Michigan University

CONSUMER HEALTH RECONCEPTUALIZED: SELF-EFFICACY, SOCIAL JUSTICE, AND CONSUMER ADVOCACY FOR ALL UNDERGRADUATES

Presenter: Rebecca Pearson, PhD, MPH, Central Washington University

3:00PM – 3:15PM

BREAK: Pick up refreshments while visiting Exhibitors

Room: Grand Ballroom II and Foyer

3:15PM – 4:45PM

CASH



Plenary II: Confronting the Health Challenges of Young Adults: From Campus to Community

Moderator: Dixie Dennis, PhD, MCHES

Room: Grand Ballroom I

Presenters: Claire Brindis, DrPH, University of California, San Francisco School of Medicine; Jenny Haubenreiser, MA, FACHA, Oregon State University

4:45PM - 5:00PM

STUDENT CASE STUDY COMPETITION AWARDS

Room: Grand Ballroom I

Karl Larson, PhD, Gustavus Adolphus College

5:00PM – 6:00PM

SOPHE CoP Chairs Committee

Room: Council Suite

5:00PM – 7:00PM

ESG

Opening SOPHE & ESG Networking Reception
SPONSORED BY INDIANA UNIVERSITY, DÉPARTMENT OF APPLIED HEALTH SCIENCE

Room: Grand Ballroom II & Grand Ballroom Foyer

7:00PM – 8:00PM

Poster Group G—Tear Down

Room: Grand Ballroom II (Exhibit Hall)

FRIDAY, APRIL 24

7:00AM – 6:00PM

Registration/CE Desk Open

Room: Grand Ballroom Foyer

7:00AM - 8:30AM

SOPHE Past Presidents Breakfast

Room: Council Suite

7:00AM – 8:30AM

WKSP

Early Riser Workshop 1: Ebola and Emergency Preparedness

Moderator: Adenike Bitto, MD, MPH, DrPH, MCHES

Room: Galleria South

INNOVATION IN ACTION: DEVELOPING ONLINE MATERIALS FOR RADIATION EMERGENCY PREPAREDNESS AND RESPONSE

Presenter: John Donovan, MPH, Centers for Disease Control and Prevention

* This session is supported in part by a cooperative agreement with the Centers for Disease Control and Prevention (CDC-RFA-DP14-1418). The views expressed in written materials or publications and by speakers and moderators do not necessarily reflect the official policies of the Department of Health and Human Services, nor does the mention of trade names, commercial practices, or organizations imply endorsement by the U.S. Government.

DETAILED SCHEDULE

HEALTH EDUCATION FOR EBOLA CONTROL IN WEST AFRICA: A REVIEW CURRENT EVENTS

Presenter: William Brieger, CHES, MPH, DrPH, The Johns Hopkins Bloomberg School of Public Health

THEORIES, MISCONCEPTIONS, MEDIA, AND THE PUBLIC: EBOLA IN PERSPECTIVE

Presenter: Angela Omondi, BSc, Florida International University

7:00AM – 8:30AM

WKSP
TECH

Early Riser Workshop 2: Technology Roundtable

Moderator: Mark Kittleson, PhD, FAAB, FAAHE

Room: Galleria North

▲ THE IMPLEMENTATION AND EVALUATION OF A PUBLIC HEALTH ETHICS EDUCATION ONLINE TOOL

Presenter: Jennifer Tripken, EdD, CHES, Marymount University

STUDENTS, TECHNOLOGY AND HEALTH

Presenter: Lydia Burak, PhD, CHES, Bridgewater State University

▲ REACHING YOUTH WHERE THEY ARE AT: ON THEIR PHONES

Presenter: Jessica Silk, MPH, Planned Parenthood Federation of America

TRAINING COMMUNITY HEALTH WORKERS ONLINE TO WORK WITH FORMERLY INCARCERATED COMMUNITIES IN CLINICAL SETTINGS

Presenter: Amie Fishman, MPH, City College of San Francisco

▲ WHAT'S IN YOUR TECH TOOLBOX?

Presenter: Holly Satterfield, BA, MEd, Kent State University

▲ UTILIZING CELLPHONES TO FACILITATE A MODIFIED PHOTOVOICE ACTIVITY FOR TEACHING MULTI-DIMENSIONAL WELLNESS: AN INNOVATIVE APPROACH FOR INCREASING STUDENT ENGAGEMENT AND EMPOWERMENT

Presenter: Shannon McMorrow, MPH, PhD, University of Indianapolis

▲ GETTING SMART WITH SOCIAL MEDIA

Presenter: Emilia Zarco, MD, MEd, Adelphi University

▲ LESSONS FROM THE CYBER TRENCHES: BEST PRACTICES FOR DEVELOPING QUALITY ONLINE ACADEMIC PROGRAMS IN HEALTH EDUCATION

Presenter: Jody Early, PhD, MS, University of Washington-Bothell

PHOTOVENTION AS A PATH TO CRITICAL CONSCIOUSNESS WITHIN PHOTOVOICE

Presenter: Jennifer Herget, BA, University of North Carolina at Greensboro

BEST PRACTICES IN BLAZING A TRAIL FOR TEACHING HEALTH EDUCATION ONLINE

Presenter: Lori Dewald, EdD, ATC, MCHES, FAAHE, A.T. Still University

▲ STUDENT USE OF TECHNOLOGY TO SUPPORT PERSONAL BEHAVIOR CHANGE IN HEALTH PROMOTION COURSES

Presenter: Jasmine Ward, PhD, MPH, CHES, Kennesaw State University

7:00AM – 8:30AM

WKSP
CASH

Early Riser Workshop 3: Teaching Techniques

Moderator: Kathleen Allison, PhD, MPH, MCHES

Room: Salon I – III

SUCCESSFULLY TEACHING HEALTH EDUCATION

Presenter: Terri Mitchell, PhD, Appalachian State University

7:30AM – 8:30AM

Poster Group H – Set up

Room: Grand Ballroom II (Exhibit Hall)

8:30AM – 5:00PM

Exhibit Hall Open

Room: Grand Ballroom II

8:45AM – 9:45AM

PSA



Plenary III: Blazing a Trail for Injury Prevention

2015 ELIZABETH FRIES AWARD & LECTURE

Moderator: Sandra Bulmer, PhD, MS, CHES

Room: Grand Ballroom I

Presenter: David Sleet, PhD, Centers for Disease Control and Prevention; 2015 Fries Family Foundation Fellow

9:45AM – 10:00AM

BREAK: Pick up refreshments while visiting Exhibitors

Room: Grand Ballroom II and Foyer

10:00AM – 11:30AM

PSA

CID



CONCURRENT SESSIONS C

C1: Preventing and Reducing Tobacco Use: Population Health Initiatives

SPONSORED BY NATIONAL IMPLEMENTATION AND DISSEMINATION FOR CHRONIC DISEASE PREVENTION PROJECT*

Moderator: Melissa Shelton, MPA, MCHES

Room: Salon I – III

EXPOSURES TO ANTI-TOBACCO MESSAGES: ASSOCIATION WITH TOBACCO USE BEHAVIOR AND ATTITUDES IN INDIAN ADOLESCENTS

Presenter: Jagdish Khubchandani, MBBS, PhD, Ball State University

PA FREE QUITLINE FAX REFERRAL EXPANSION IN PENNSYLVANIA

Presenter: Livia Fortunato, MS, Public Health Management Corporation

ASSESSING CAMPUS READINESS FOR TOBACCO- OR SMOKE-FREE POLICIES

Presenter: Melinda Ickes, PhD, University of Kentucky

FINANCIAL INCENTIVES, INTERPERSONAL COMMUNICATION, AND SMOKING CESSATION: SURVEY EVIDENCE FROM A BEHAVIORAL TELEHEALTH INTERVENTION IN A LOW-INCOME POPULATION

Presenter: Michael Parks, PhD, Minnesota Department of Health

* This session is supported in part by a cooperative agreement with the Centers for Disease Control and Prevention (CDC-RFA-DP14-1418). The views expressed in written materials or publications and by speakers and moderators do not necessarily reflect the official policies of the Department of Health and Human Services, nor does the mention of trade names, commercial practices, or organizations imply endorsement by the U.S. Government.

DETAILED SCHEDULE

CID **C2: Mental Health Promotion**

Moderator: Holly Mata, PhD, CHES

Room: Galleria North

PREDICTORS OF DEPRESSION DIAGNOSES AND SYMPTOMS IN VETERANS: RESULTS FROM A NATIONAL SURVEY

Presenter: Katherine Hendricks Thomas, PhD, Charleston Southern University

DEVELOPMENT AND EVALUATION OF GET FIT, A FITNESS AND NUTRITION PROGRAM FOR INDIVIDUALS WITH INTELLECTUAL AND DEVELOPMENTAL DISABILITIES (IDD) AND THEIR CAREGIVERS

Presenter: Leslie Spencer, PhD, MS, Rowan University

ASSESSING THE FEASIBILITY OF A PEER-DRIVEN INTERVENTION TO IMPROVE THE REACH OF A DEPRESSION MANAGEMENT EVIDENCE-BASED PROGRAM AMONG OLDER VETERANS

Presenter: Lesley Steinman, MPH, MSW, University of Washington

MENTAL HEALTH STATUS AND ACCESS TO MENTAL HEALTH CARE IN PENNSYLVANIA LGBT COLLEGE STUDENTS

Presenter: Victoria Martin, West Chester University

CASH **C3: Pathways to Fostering Healthy Youth**

Moderator: Julia Smith, MPH, CHES

Room: Galleria South

RECOVERY HIGH SCHOOLS: EDUCATIONAL AND RECOVERY SUPPORT FOR ADOLESCENTS SEEKING RECOVERY FROM SUBSTANCE ABUSE

Presenter: Emily A. Hennessy, MPhil, Vanderbilt University

A TALE OF TWO CURRICULA: TESTING THE IMPACT OF HEALTH EDUCATION IN PUBLIC HIGH SCHOOLS WITH AT-RISK YOUTH

Presenter: Megan Howard, MPH, University of Wisconsin-Milwaukee

POP-D: SCIENCE EDUCATION BASED PRESCRIPTION DRUG PREVENTION FOR YOUTH

Presenter: Nicole Wanty, MAA, KDH Research & Communication

EVALUATION OF BEHAVIORAL ECONOMIC STRATEGIES TO IMPROVE SCHOOL FOOD CHOICE AND APPEAL IN THE LOS ANGELES UNIFIED SCHOOL DISTRICT, CALIFORNIA FOR SCHOOL-YEAR 2013-14

Presenter: Patricia L. Cummings, MPH, PhD, Los Angeles County Department of Public Health

CID **C4: Thinking Global, Acting Local: Diversity in Health**

Moderator: Bojana Beric, MD, PhD, MA, CHES

Room: Forum Suite

COMMUNITY-BASED PARTICIPATORY RESEARCH WITH AMERICAN INDIAN, ALASKA NATIVE AND NATIVE HAWAIIAN COMMUNITIES: WHERE HAVE WE BEEN AND WHERE SHOULD WE GO?

Presenter: Alicia L. Salvatore, DrPH, MPH, University of Oklahoma

CONTROLLING TUBERCULOSIS IN RECENT IMMIGRANT AND REFUGEE POPULATIONS: PARTICIPATORY DESIGN OF PICTURE-BASED MATERIALS

Presenter: Xanthi Scrimgeour, MEd, MCHES, CommunicateHealth, Inc

ESG **C5: Blazing a Trail for Health Education and Health Promotion: You, Your Chapter and Your Community (Eta Sigma Gamma Session) – All are welcome!**

Moderator: Jodi Brookins-Fishe, PhD, MCHES

Room: Grand Ballroom I

STUDENTS WORKING WITH A COMMUNITY BASED HEALTH CLINIC

Presenter: Jessica Kruger, MSHE, University of Toledo

SEXTING BEHAVIORS AND CONSEQUENCES AMONG SELECTED SOUTHERN UNDERGRADUATES

Presenter: Heather Hudson, PhD, MPH, CHES, University of Central Arkansas

MOTIVATIONAL INTERVIEWING FOR HEALTH EDUCATORS: AN INNOVATIVE STRATEGY TO ADDRESS PRIORITY HEALTH ISSUES

Presenter: Keely Rees, PhD, MCHES, University of Wisconsin La Crosse

WIN-WIN SITUATIONS FOR THE GAMMAN AND ESG CHAPTER SPONSOR

Presenter: Kelly Wilson, PhD, MCHES, Texas A&M University

11:30AM – 1:00PM

Lunch on your own

11:30AM – 12:30PM

Posters with Presenters – Group H

Room: Grand Ballroom II (Exhibit Hall)

11:45AM – 12:45PM

SOPHE All Member Business Meeting

Room: Grand Ballroom I

1:00PM – 4:00PM

ESG **ESG Business Meeting**

Room: Council Suite

1:00PM – 2:00PM

TECH **▲ Plenary IV: Health Education Technology in the 21st Century**

Moderator: Mark Kittleson, PhD, FAAB, FAAHE

Room: Grand Ballroom I

Presenter: Lorien C. Abrams, ScD, MA, George Washington University

2:00PM – 2:15PM

BREAK: Pick up refreshments while visiting Exhibitors

Room: Grand Ballroom II and Foyer

2:15PM – 3:45PM

CONCURRENT SESSIONS D

D1: United for Health: Learning from Statewide Practice and Policy Initiatives

Moderator: Beth Stevenson, MPH

Room: Grand Ballroom I

PARTNERING TO ENHANCE SAFE SLEEP EDUCATION: INDIANA'S APPROACH

Presenter: Theresa Hunter, MPH, MS, Indiana State Department of Health

FOSTERING INTERAGENCY COLLABORATION THROUGH THE ADMINISTRATION OF THE PA YRBS/YTS

Presenter: Sophia Allen, MBA, Pennsylvania Department of Health

DETAILED SCHEDULE

TECHNICAL ASSISTANCE NEEDS ACROSS A MULTI-STATE SAMPLE OF CHILDCARE CENTERS: THE NATIONAL EARLY CARE AND EDUCATION LEARNING COLLABORATIVE PROJECT
Presenter: Dan Schober, PhD, MPH, Gretchen Swanson Center for Nutrition

ORGANIZATIONAL FACTORS ASSOCIATED WITH THE IMPLEMENTATION OF EVIDENCE-BASED PUBLIC HEALTH INTERVENTIONS IN LOCAL HEALTH DEPARTMENTS IN NEBRASKA

Presenter: Janelle Jacobson, PhD, MPH, CHES, State University of New York

STATEWIDE HEALTH IMPROVEMENT PROGRAM (SHIP) IN MINNESOTA – BRIDGING THE COMMUNITY THROUGH POLICY, SYSTEMS AND ENVIRONMENTAL CHANGE: EVIDENCE BASED STRATEGIES PUT TO THE TEST

Presenter: Allison Heinzeller, BS, Minnesota Department of Health

CID **D2: Focus on Diet and Health SPONSORED BY NATIONAL IMPLEMENTATION AND DISSEMINATION FOR CHRONIC DISEASE PREVENTION PROJECT***

Moderator: Dan Duquette, PhD

Room: Galleria North

BENEFITS AND BARRIERS TO PHYSICAL ACTIVITY AMONG COLLEGE STUDENTS

Presenter: Amanda L Divin, PhD, CSCS, Western Illinois University

THE CONCEPTUAL CHANGE MODEL IN PRACTICE: A DISCUSSION OF ITS APPLICATION IN A CULTURALLY APPROPRIATE FOOD SAFETY INTERVENTION

Presenter: Margaret Siebert, MS, University of New Mexico

FRUIT & VEGETABLE INTAKE & FOOD INSECURITY AMONG AFRICAN AMERICAN OLDER ADULTS

Presenter: Angelia Paschal, PhD, The University of Alabama

CID **CASH** **D3: Advancing Health Equity Among LGBT Populations**

Moderator: Stacy Robison, MPH, MCHES

Room: Salon I – III

SUBSTANCE USE OF LESBIAN, GAY, BISEXUAL AND HETEROSEXUAL COLLEGE STUDENTS: BRIDGING RESEARCH AND PRACTICE WITH TARGETED STRATEGIES FOR CHANGE

Presenter: Dianne Kerr, PhD, MCHES, Kent State University

CREATING THE LGBTQ CAMPUS CLIMATE ASSESSMENT: UTILIZING HEALTH EDUCATOR COMPETENCIES

Presenter: Frederick Schulze, DEd, MCHES, Lock Haven University

EXPLORING BEST PRACTICES FOR IMPROVING LGBT CULTURAL COMPETENCY AMONG PUBLIC HEALTH STUDENTS: THE TULANE SOCIETY FOR SEXUALITY, HEALTH, AND GENDER (TSSHAG)

Presenter: Jennifer Lauren Glick, MPH, PhD(c), Tulane University

HEALTH AND SAFETY DISPARITIES BETWEEN TRANSGENDER AND CISGENDER COLLEGE STUDENTS IN THE U.S., SPRING 2010
Presenter: Lisa Lindley, DrPH, MPH, CHES, George Mason University

CID **D4: Optimizing Men's Health**

Moderator: Jagdish Khubchandani, MBBS, PhD

Room: Galleria South

PROSTATE CANCER IN INDIAN COUNTRY: LUMBEE MEN SPEAK OUT

Presenter: Sarah Langdon, MPH, CHES, Wake Forest School of Medicine

MEN ACCESSING AND LEARNING TO ENGAGE IN HEALTH ENHANCING AND LEARNING PROGRAMS: DEVELOPMENT AND TESTING OF A CONCEPTUAL MODEL REGARDING ACCESS TO HEALTH CARE AND PUBLIC HEALTH IMPLICATIONS

Presenter: James Leone, PhD, MPH, MS, LAT, ATC, CSCS, CHES, FMHI, Bridgewater State University

"MY DAD NEVER TALKED TO ME ABOUT SEX"- FEASIBILITY OF A SEXUAL RISK COMMUNICATION PROGRAM FOR AFRICAN AMERICAN FATHER-SON DYADS.

Presenter: Jillian Baker, DrPH, EdM, La Salle University

INCREASING TARGETED BEHAVIORAL HIV PREVENTION STRATEGIES FOR HIGH-RISK YOUNG MEN WHO HAVE SEX WITH MEN AT URBAN COLLEGES AND UNIVERSITIES

Presenter: Jean Breny, PhD, MPH, Southern Connecticut State University

PSA **D5: Integrating Advocacy Methods into Professional Development Preparation Programs**

Moderator: Regina Galer-Unti, PhD, MCHES

Room: Forum Suite

FACULTY EDUCATING FOR ADVOCACY: STRATEGIES FOR DEVELOPING ADVOCACY KNOWLEDGE AND SKILLS AMONG STUDENTS

Presenters: Michael Barnes, PhD, MS, MCHES, Brigham Young University; Marlene Tappe, PhD, MCHES, Minnesota State University; Jeff Goodman, MPH; Amy Thompson, PhD, MEd, University of Toledo

3:45PM – 4:00PM

BREAK: Pick up refreshments while visiting Exhibitors

Room: Grand Ballroom II and Foyer

4:00PM – 5:00PM

ESG **ESG Awards Ceremony – All are welcome!**

Room: Council Suite

4:00PM – 5:30PM

CID **E1: Workforce Development: Preparing the Future Generation of Health Workers**

Moderator: Kelli Brown, PhD, CHES

Room: Salon I – III

CULTURE, DIVERSITY, AND HEALTH OF THE ASIAN INDIANS
Presenter: Naveen Mehrotra, MD, MPH, SKN Foundation

FACTORS AFFECTING MINORITY PUBLIC HEALTH EDUCATION STUDENTS' PARTICIPATION IN STUDY ABROAD ACTIVITIES AND GLOBAL HEALTH CAREERS

Presenter: LaHoma Smith Romocki, PHD, MPH, North Carolina Central University

* This session is supported in part by a cooperative agreement with the Centers for Disease Control and Prevention (CDC-RFA-DP14-1418). The views expressed in written materials or publications and by speakers and moderators do not necessarily reflect the official policies of the Department of Health and Human Services, nor does the mention of trade names, commercial practices, or organizations imply endorsement by the U.S. Government.

DETAILED SCHEDULE

THE EXPANDED ROLE OF HEALTH EDUCATION IN HIV WORKFORCE DEVELOPMENT IN LOS ANGELES COUNTY

Presenter: Disly Juarez, MPH, Los Angeles County Department of Public Health

CASH
PSA



E2: Community Based Health Promotion and Disease Prevention

Moderator: Daphnee Guillame, MPH, CHES

Room: Galleria North

ADVOCACY GROUPS TO FOSTER BRAINSTORMING AND EMOTIONAL FUNCTIONING IN CHILDREN WITH TYPE I DIABETES

Presenter: Laura Nabors, PhD, University of Cincinnati

MOTHER TO CHILD TRANSMISSION OF HIV: DISSECTING THE INFLUENCE OF INDIVIDUAL AND COMMUNITY-LEVEL FACTORS ON PRE-TEST COUNSELLING

Presenter: Marguerite Sagna, PhD, Grand Canyon University

TRAINING PROMOTORES DE SALUD TO PREVENT EARLY-CHILDHOOD TOOTH DECAY IN LOW-INCOME LATINO CHILDREN

Presenter: Kristen Holtz, PhD, KDH Research & Communication

MODELED BEHAVIOR: AN ACTIVE APPROACH TO ADDRESSING TEEN PREGNANCY

Presenters: Keri McDonald Pridgeon, BS, MPH, CHES, Mercer University

TECH
PSA

E3: Tools of the Trade: Technology in Health Education Training

Moderator: Jeanne Freeman, PhD, CHES

Room: Grand Ballroom I

WEBINARS: ARE THEY WORKING?

Presenter: Ann Ussery-Hall, MPH, CHES, National Association of Chronic Disease Directors

OSNAP ONLINE: OFFERING AFTERSCHOOL PROVIDERS WEB-BASED TRAINING, EVALUATION TOOLS, AND RESOURCES TO CREATE OPPORTUNITIES FOR PHYSICAL ACTIVITY AND HEALTHY FOODS AND BEVERAGES

Presenter: Catherine Giles, MPH, Harvard School of Public Health

UIABC: A WEB-BASED INTERVENTION TO ENHANCE HEALTH EDUCATION EFFORTS ADDRESSING BREAST CANCER

Presenter: Sonia Lopez, MPH, University of Illinois Extension

CHANGING THE TIDE: TRANSLATING EVIDENCE-BASED INTERVENTIONS INTO E-LEARNING TRAINING TOOLKIT FOR THE HIV PREVENTION WORKFORCE

Presenter: Rhondette Jones, MPH, Centers for Disease Control and Prevention

MANY THANKS TO THE 2015 ANNUAL MEETING PLANNING COMMITTEE!

DEBORAH A. FORTUNE, PHD, MCHES, TRUSTEE, 2015 ANNUAL MEETING

CYNTHIA BURWELL & JAGDISH KHUBCHANDANI
CO-CHAIRS, ABSTRACT COMMITTEE

KAY DEANER
CHAIR, CONTINUING EDUCATION COMMITTEE

PING JOHNSON & KANDICE PORTER
CO-CHAIRS, FUNDRAISING/EXHIBITS COMMITTEE

KATHLEEN ALLISON & DEITRA WENGERT
CO-CHAIRS, PROGRAM COMMITTEE

JEANNE FREEMAN & MICHAEL WIBLISHAUSER
CO-CHAIRS, PUBLICITY COMMITTEE

LOLA HOUSTON-HAGER
CHAIR, SOCIAL EVENTS/ONSITE LOGISTICS COMMITTEE

BOJANA BERIC
SARA COLE
MARIA FERNANDEZ
JODI BROOKINS FISHER
DAPHNE GUILLAME
LAURENCIA HUTTON-ROGERS
DEE JORDAN

MARK KITTLESON
DONALD LAHUFFMAN
AYANNA LYLES
FREDANNA M'CORMACK
JOYCE MORRIS
LEAH NEUBAUER
CAROLYN PARKS
SHEILA PATTERSON

SARAH PEMBER
JENNIFER PERKINS
MIGUEL PEREZ
ASHLEY PHILLIPS
HANNA PRIEST
PATRICIA RHYNDERS
DARLENE SAUNDERS
MARY SHAW

CAILE SPEAR
CHANDRA STORY
AMY THOMPSON
GAYLE WALTER
KELLY WILSON
EMILIA PATRICIA ZARCO

Pacific Northwest SOPHE

*promoting, encouraging, and contributing to the health of all people
through fellowship, professional exchange, continuing education and support*



DETAILED SCHEDULE

CID E4: Women's Health: Wellness Promotion and Disease Prevention Initiatives

Moderator: Cynthia Burwell, EdD, MCHES

Room: Galleria South

BUILDING CHW ADVOCACY SKILLS TO ADDRESS HEALTH DISPARITIES: THE WOMEN'S HEALTH LEADERSHIP INSTITUTE

Presenter: Susan Kunz, MPH, Mariposa Community Health Center

FILLING THE GAPS IN WOMEN'S OSTEOPOROSIS KNOWLEDGE AND BEHAVIORS

Presenter: Susan Roberts-Dobie, PhD, University of Northern Iowa

CID **CASH** E5: Contemporary Health Issues among Young Adults

Moderator: Sarah Pember, BA, MT

Room: Forum Suite

SEX DIFFERENCES IN STRESS AND COPING AMONG COLLEGE STUDENTS

Presenter: Chris Eisenbarth, PhD, MS, MCHES, Weber State University

PERFORMING HEALTH EDUCATION: APPLYING RESEARCH POETICS TO ADOLESCENT SEXUAL HEALTH INTERVENTIONS

Presenter: Tracy Nichols, PhD, University of North Carolina at Greensboro

THE CLINIC IS OPEN BUT NO ONE SHOWS UP: TEACHING SEXUAL HEALTH PROMOTION SKILLS TO YOUTH LEADERS IN A HIGH-RISK URBAN COMMUNITY

Presenter: Lori Bokowy, MEd, CHES, University of Wisconsin Milwaukee

5:30PM – 6:30PM

Exhibit Hall – Tear Down

Room: Grand Ballroom II

5:30PM – 6:30PM

Posters Group H – Tear Down

Room: Grand Ballroom II

5:30PM – 6:30PM

SOPHE 2015 Annual Meeting Planning Committee

Room: Studio Suite

5:45PM – 6:45PM

SOPHE Communications Committee

HopCity Tavern

6:00PM – 7:00PM

SOPHE Award Committee

Room: Skyline Foyer

6:15PM – 7:00PM

Leaving Your SOPHE Legacy (By Invitation)

Room: Skyline III

7:00PM – 10:00PM

SOPHE Awards Gala (ticket required)

SPONSORED BY: SAGE PUBLISHING

Room: Skyline I and II

SATURDAY, APRIL 25

7:00AM – 1:00PM

Registration/CE Desk Open

Room: Grand Ballroom Foyer

7:00AM – 8:00AM

SOPHE 2016 Annual Meeting Planning Committee

Room: Studio Suite

7:00AM – 7:30AM

Poster Group J – Set up

Room: Grand Ballroom II

7:30AM – 8:30AM

Posters with Presenters – Group J

Room: Grand Ballroom II

8:00AM – 12:00PM

NCHEC CHES/MCHES EXAM

(Prior Registration Required)

Room: Skyline II

8:00AM – 5:00PM

Foundation for the Advancement of Health Education (FAHE) Board Meeting

Room: Executive Suite

8:30AM – 10:00AM

CONCURRENT SESSION F

CASH F1: Community Based Morbidity and Mortality Reduction Interventions

Moderator: Jennifer Torres, MSSW, MPH, PhD(c)

Room: Galleria South

RELATIONSHIP EDUCATION FOR YOUNG COPARENTING COUPLES: IDENTIFYING LINKS BETWEEN PROGRAM PROCESS AND PARENTING OUTCOMES

Presenter: Paul Florsheim, PhD, University of Wisconsin Milwaukee

INVOLVING COMMUNITY, ENGAGING FAMILIES: A CASE OF A SCHOOL-BASED PREVENTION EVENT TO SERVE DIVERSE STUDENT NEEDS

Presenter: Hope Corbin, PhD, Western Washington University

AN INTERDISCIPLINARY RURAL COMMUNITY ENGAGEMENT HEALTH CARE SCREENING PROGRAM

Presenter: Janette Olsen, PhD, Idaho State University

BLAZING THE TRAIL FOR HEALTHIER SEXUALITY COMMUNICATION BETWEEN PARENTS AND FUTURE GENERATIONS

Presenter: Lori Reichel, PhD, MA, BA, University of Wisconsin-La Crosse

PSA F2: Future of Health Education, Advocacy & Practice

Moderator: Cherylee Sherry, MPH

Room: Galleria North

TEACHING AND LEARNING HEALTH INEQUITY AS PART OF UNDERGRADUATE HEALTH EDUCATION CURRICULA

Presenter: Natalie Sampson, PhD, MPH, University of Michigan-Dearborn

DETAILED SCHEDULE

INNOVATIVE AGENDA-SETTING PRACTICES: ADVANCING POLICY DEVELOPMENT TO PROMOTE HEALTH

Presenter: *Chuck Kozel, PhD, MPH, MCHES, New Mexico State University*

THE EVIDENCE FOR STRUCTURAL APPROACHES TO PROMOTING HEALTH

Presenter: *Lisa Lieberman, PhD, CHES, Montclair State University*

LEARN IT, LIVE IT, SHARE IT: EXPERIENCING SERVICE LEARNING WITHIN THE CLASSROOM AND OUT IN THE COMMUNITY-THE HS 104 PHENOMENON

Presenter: *Robert Rinck, MPH, San Jose State University*

PSA ▲ **F3: Enduring Contributions of SOPHE Leaders**

Moderator: *Julia Alber, MPH*

Room: Salon I – III

HOWARD W. ENNES, JR.: SOPHE'S 8TH PRESIDENT

Presenters: *Lawrence W. Green, DrPH, University of California, San Francisco; Judith Ottoson, MPH, EdD, San Francisco State University*

FLORENCE B. FIORI: SOPHE'S 23RD PRESIDENT

Presenter: *Marilyn Rice, MPH, MCHES, Merci Consulting*

CLARENCE E. PEARSON: SOPHE'S 39TH PRESIDENT

Presenter: *John Allegrante, PhD, Columbia University—Teacher's College*

KAREN DENARD GOLDMAN: SOPHE'S 52ND PRESIDENT

Presenter: *Jody Steinhardt, MPH, CHES, Maimonides Medical Center*

CASH **F4: Best Practices in Maternal & Infant Health**

CID Moderator: *Keely Rees, PhD, MCHES*

Room: Forum Suite

B'MORE FOR HEALTHY BABIES UPTON & DRUID HEIGHTS AND ITS IMPACT ON INFANT MORTALITY IN BALTIMORE CITY

Presenter: *Daphnee A. Guillaume, MPH, CHES, University of Maryland*

PHYSICIAN AND REGISTERED DIETITIAN COLLABORATION FOR PROVIDER EDUCATION ON PEDIATRIC OBESITY

Presenter: *Amy Wishner, MSN, RN, American Academy of Pediatrics*

USING QUALITATIVE METHODS TO EXPLORE PATIENT-PROVIDER COMMUNICATION AND COUNSELING ABOUT GESTATIONAL WEIGHT GAIN, HEALTHY EATING AND PHYSICAL ACTIVITY DURING PREGNANCY AMONG FIRST-TIME PREGNANT LATINO WOMEN

Presenter: *Ana Lindsay, DDS, MPH, DrPH, UMass Boston*

PSA
CASH

F5: Policy & Systems Change for Healthy Behaviors SPONSORED BY NATIONAL IMPLEMENTATION AND DISSEMINATION FOR CHRONIC DISEASE PREVENTION PROGRAM*

Moderator: *Leslie McBride, PhD*

Room: Grand Ballroom I

HEALTH PROMOTION AT THE BALLPARK: PEANUTS, POPCORN, AND MIGHTY MOLAR

Presenter: *Bonni Hodges, PhD, SUNY Cortland*

THE "GROWING HEALTHY KIDS" PROJECT: EMPOWERING STAKEHOLDERS TO CREATE A SHARED VISION OF CHILDHOOD OBESITY REDUCTION IN HEAD START PRESCHOOLERS

Presenter: *Stephanie Nicely, EdD, MSN, RN, Miami University*

MEASURABLE, SCALABLE AND SUSTAINABLE PHYSICAL ACTIVITY HEALTH PROMOTION PROGRAM FOR ELEMENTARY STUDENTS IN GEORGIA THAT SPEAKS THE LANGUAGE OF THE EDUCATION SECTOR

Presenter: *Christi Kay, MEd, HealthMPowers*

LOCAL STRATEGIES FOR REDUCING THE MARKETING OF UNHEALTHY FOODS AND BEVERAGES TO CHILDREN

Presenter: *Lauren Walter, MPH, CHES, Los Angeles County Department of Public Health*

10:00AM – 10:15AM

BREAK: Pick up refreshments while visiting Student Posters

Room: Grand Ballroom II and Foyer

10:15AM – 11:45AM

CID ▲ **Closing Plenary V: Diversity and Health Equity: Charting a Path for a Healthier America**

Moderator: *Rebecca Reeve, PhD, CHES*

Room: Grand Ballroom I

Presenters: *America Bracho, MD, CDE, MPH, Latino Health Access; Wizdom Powell, PhD, MPH, University of North Carolina—Chapel Hill; Jesus Ramirez-Valles, PhD, University of Illinois at Chicago*

11:45AM – 12:00PM

Closing Remarks

Grand Ballroom I

Presenter: *Sandra Bulmer, PhD, MS, CHES, 2015–16 SOPHE President*

12:00PM – 1:00PM

Posters Group J – Tear Down

Room: Grand Ballroom II

1:00PM – 3:00PM

SOPHE Executive Committee

Room: Council Suite

* This session is supported in part by a cooperative agreement with the Centers for Disease Control and Prevention (CDC-RFA-DP14-1418). The views expressed in written materials or publications and by speakers and moderators do not necessarily reflect the official policies of the Department of Health and Human Services, nor does the mention of trade names, commercial practices, or organizations imply endorsement by the U.S. Government.



A SPECIAL THANK YOU TO THE SOPHE ANNUAL MEETING SUPPORTERS!

PLEASE BE SURE TO VISIT THE EXHIBIT HALL THROUGHOUT THE
CONFERENCE & ESPECIALLY ON THURSDAY EVENING FOR THE OPENING RECEPTION!
WE WILL GIVE AWAY SOME GREAT DONATED PRIZES!

PLATINUM

INDIANA UNIVERSITY, SCHOOL OF PUBLIC HEALTH AND DEPARTMENT OF APPLIED HEALTH SCIENCE
SAGE PUBLICATIONS, INC.

GOLD

JAMES F. AND SARAH T. FRIES FOUNDATION
ETA SIGMA GAMMA

SILVER

NATIONAL IMPLEMENTATION & DISSEMINATION FOR CHRONIC DISEASE PROJECT,
CENTERS FOR DISEASE CONTROL AND PREVENTION

BRONZE

A.T. STILL UNIVERSITY
HEALTHEDCO
HORMONE HEALTH NETWORK
INSTITUTE OF INTERNATIONAL EDUCATION
UNIVERSITY OF FLORIDA-ARTS & MEDICINE DEPARTMENT

DIAMOND

AMERICAN ASSOCIATION OF DIABETES EDUCATORS	NATIONAL COMMISSION FOR HEALTH EDUCATION CREDENTIALING, INC.
AMERICAN ASSOCIATION OF POISON CONTROL CENTERS	NATIONAL LIBRARY OF MEDICINE
DR. KELLI AND MR. DENNIS BROWN	NATIONAL MATERNAL & CHILD ORAL HEALTH RESOURCE CENTER
CENTRAL MICHIGAN UNIVERSITY	NEW MEXICO STATE UNIVERSITY NWI GLOBAL
CENTRAL WASHINGTON UNIVERSITY	OREGON STATE UNIVERSITY, COLLEGE OF PUBLIC HEALTH AND HUMAN SCIENCES
DEPAUL UNIVERSITY MPH PROGRAM	OXFORD UNIVERSITY PRESS
U.S. FOOD & DRUG ADMINISTRATION	TEXAS A&M UNIVERSITY TOUCANED
US FDA CENTER FOR TOBACCO PRODUCTS	U.S. OFFICE OF PERSONNEL MANAGEMENT
GRAND CANYON UNIVERSITY	UNIVERSITY OF INDIANAPOLIS MPH PROGRAM
HEALTHWAVE	WALDEN UNIVERSITY
HUMAN KINETICS	
IQ SOLUTIONS	
NATIONAL ASSOCIATION OF CHRONIC DISEASE DIRECTORS	
NATIONAL COLLEGE OF NATURAL MEDICINE	



SOPHE Campaign for the 21st Century Roses for Recognition Fund-Raising Drive Top Honorees as of March 31, 2015



In this City of Roses, we are proud to honor the following top nominees whose mentorship has made a significant difference in the lives of SOPHE members. A classic symbol of grace and elegance, the pink rose is often given as a token of admiration and appreciation. If you would like to nominate your mentor, stop by the SOPHE Registration Desk to donate to SOPHE's "Roses for Recognition" Fundraising Drive! The individual with the most roses by the end of the meeting will receive a bouquet of live roses delivered to his/her office or residence. Be sure to read the complete list of honorees, which will be posted on SOPHE's website.

TOP ROSE RECIPIENTS

**JOHN P. ALLEGRANTE, PHD
COLUMBIA TEACHER'S COLLEGE**



**SAN JOSE STATE UNIVERSITY,
2013 MPH DISTANCE EDUCATION FACULTY**



BUD GERSTMAN



ANNE DEMERS



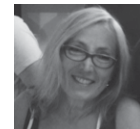
ED MAMARY



DAN PERALES



KATHLEEN ROE



VALERIE ROSE

Not pictured: Van Ta Park, Rob Knight, Dana Hughes, Carol Azar, and Analilia Garcia

NOMINATORS	EXPRESSIONS OF GRATITUDE
FLORA BLOOM	Thank you for your important insights & thoughtful counsel
SHARON WILLARD	Thank you for your stellar support
MIGUEL MARSHALL	As if 15 words could do....
AMY MARSHALL	A great health advocate and mentor
MARY CHERYL GLONER	Your support helped launch my career

NOMINATORS	EXPRESSIONS OF GRATITUDE
JEFFREY GOODMAN	Thank you for an amazing educational and life-changing adventure
CLASS OF 2013 – MPH DISTANCE PROGRAM	
MARY CHERYL GLOVER	To an amazing group of mentors & colleagues

DOZEN ROSES OR MORE

HONOREES	EXPRESSIONS OF GRATITUDE	NOMINATORS
DIANE ALLENSWORTH	Thank you for showing the way!	REBECCA REEVE
SANDRA BULMER	Thank you!	BARBARA BARTON
EVA DOYLE	Your dedication to the profession continues to inspire me!	VICTORIA ZIGMONT
VICKI FREIMUTH	Thank you for your mentorship & support.	SANDRA BULMER
LIBBY HOWZE	Thank you for leading by example.	CLAUDIA PARVANTA
KATHERINE PARKER	Grande Merci!	REBECCA REEVE
CARL PETER	Your support has lifted me up!	KATHY CROSSON
JOHN SEFFRIN	Thank you for making a huge difference in my professional career!	KELLI BROWN
SCOTT SIMONDS	Thank you for your inspiration & support.	MOHAMMAD TORABI
NAN STOUT	Thanks for all your years of wise counsel & support!	ELAINE AULD
KAY WOODIEL	Congratulations on your retirement.	ELAINE AULD
		JOAN COWDERY & ETA SIGMA GAMMA