

Become a youth health advocate at SOPHE's 2022 Advocacy Summit

The ongoing COVID-19 pandemic and the associated racial injustice and mental health crises pose a threat to the health and wellbeing of our young people. The midterm elections have already been fraught with contentious debates about nonexistent critical race theory in K-12 classrooms and transgender rights.

With considerable legislative focus on school-age children, SOPHE's legislative ask should focus on advancing the Real Education and Access for Health Youth Act.

During the 2022 Advocacy Summit, attendees will learn the necessary skills to advocate for youth health. Participants new to advocacy learn the basics to enhance their confidence. Seasoned advocacy veterans are exposed to advanced sessions. The Summit features five educational tracks:

- Anti-Racism & Youth Health
- Youth LGBTQ+, Sexual and Reproductive Health
- Youth Mental Health
- Misinformation in Youth Health
- Student Poster Track: Health Advocacy for Youth
- **Put your advocacy skills to the test**

After two days of advocacy training, take your advocacy skills to Capitol Hill! Register to meet with legislative leaders during congressional visits on Monday, October 24.

Students who are member of Eta Sigma Gamma receive a \$10 discount on registration! Groups of 10 or more are eligible for special registration rates, email info@sophe.org to register a group.

Back in person since 2019!

We're thrilled to bring the 2022 Advocacy Summit back in person this year at the Hilton Capitol Hill in the nation's capital.

CONTENTS

President's Letter 2

Professional Development Corner 3

EXECUTIVE EDGE & NEWS

Executive Edge 5

MEMBERSHIP NEWS

New SOPHE Members 6

Members on the Move 6

Member Spotlight 6

JOURNAL CORNER

Pedagogy in Health Promotion (PHP) 7

Health Promotion Practice (HPP) 8

Health Education & Behavior (HE&B) 8

NATIONAL OFFICE NEWS

Welcome New SOPHE Staff 9

Welcome SOPHE Summer Interns 9



Upcoming Events

International Conference on Obesity and Nutritional Genomics

September 27-28, 2022, San Francisco

SOPHE's 2022 Advocacy Summit

October 22-24, 2022, Washington, D.C.

International Conference on Medical Anthropology and Public Health

October 27-28, 2022, Los Angeles

APHA's 2022 Annual Meeting & Expo

November 6-9, 2022, Boston

SOPHE 2023 Annual Conference

March 21-24, 2023, Atlanta

More at: sophe.org/calendar



PRESIDENT'S LETTER

As SOPHE's new president, I would like to introduce myself to you. I am Dr. Amy Thompson, provost and senior vice president of Academic Affairs at Wright State University in Dayton, Ohio.

I have been a long-time SOPHE member, and I'm eager to partner, and to hear your ideas on how we can advance SOPHE's national priorities and support the public health work force.

As we begin to emerge from the COVID-19 pandemic, I would like to thank each of you for your important service to our profession, SOPHE and your community. I recognize this has been a very challenging time for those working in public health given the political landscape and the heavy load many of you have faced with additional job responsibilities. There has never been a more important time for us to pull together as a profession, organize and plan for the future of public health.

Speaking of the future, I would like to share with you the five priorities that I will focus on during my presidency.

1. Growing membership – especially among students, and renewing memberships.
2. Strengthening the relationships between national SOPHE, SOPHE chapters and external partners.
3. Being a leader in providing resources and development for mental health and burnout among health education specialists.
4. Championing inclusive excellence. Diversity, Equity and Inclusion work must be intentional and part of the fabric of all that we do.
5. Exploring ways to enhance our advocacy network and activities.

I am so grateful to have the opportunity serve as SOPHE President, and I am proud to be a SOPHE member. I look forward to working together over the next year and would love to hear any ideas or suggestions you may have. Email your ideas and suggestions to info@sophe.org.

Yours in Public Health,
Amy Thompson Ph.D., FESG, CHES



National Health Education Week – October 17-21, 2022

Join us this year for NHEW 2022. The week's activities will increase awareness of major public health issues and promote a better understanding of the role of health education and health promotion.

Join SOPHE, its chapters, members, and partners, October 17-21, for events, webinars, and activities across the country.

Daily NHEW focus areas with a daily webinar:

Monday, October 17 – Health Equity: Batting Above Average

Tuesday, October 18 – Health Communications: It Is What You Say

Wednesday, October 19 – Ethics in Practice

Thursday, October 20 – CHES® & MCHES® Certification: Covering All the Bases

Friday, October 21 – Advocacy: Intentional Voices

Professional Development Corner

SOPHE's 2023 Annual Conference: The New Age of Civil Rights, Advocacy & Equity

Save the date for SOPHE's 2023 Annual Conference in Atlanta, March 21-24, 2023! We are returning to an in-person meeting after three years; we cannot wait to see everyone for outstanding professional development and networking.

SOPHE's Annual Conference will highlight civil rights in the city where it began. Hosted at the Sheraton Hotel in downtown Atlanta, attendees are blocks away from the Martin Luther King, Jr. National Historic Park, the National Center for Civil and Human Rights and Centennial Olympic Park.

Health education and health promotion professionals and colleagues will share best practices, learn about new trends in the field, network with one another, and support each other in professional development.

Registration opens soon!



Do you want to support the 2023 annual conference?
Check out the conference prospectus to find the best option to get your organization in front of 500-700 public health education and promotion specialists.

SOPHE LIVE WEBINARS

“What’s the Student Health Edu-Thon?” Details to Know to Compete in SOPHE’s Health Education Competition

Promoting Undergraduate Research for Health Education Majors

LIVE: My Mental Health Matters: Transforming Youth Mental Health in a Digital Age

ELEARN AT CORE ON DEMAND

Inclusive LGBTQ Health Education: A Model for Countering Misinformation

Are Your Evidence-Based Health Resources Reaching Native Elders?

Increasing Diversity in the Public Health Workforce: Highlights from the PHP CUPS Supplement

JOURNAL SELF STUDIES

Correlates of Moderate-to-Vigorous Physical Activity in Children With Physical Illness and Physical-Mental Multimorbidity

Effectiveness of a Digital Intervention in Increasing Flu Vaccination-Related Risk Appraisal, Intention to Vaccinate and Vaccination Behavior Among Pregnant Women

Promoting Smoking Cessation Among Lesbian and Bisexual Women: Lessons Learned From a Location-Based Media Campaign in Western North Carolina



script®

Join the training that helps pregnant women to stop smoking. Proven effective in its approach. Trains health professionals to promote and integrate, and SCRIPT® in a healthcare system or client intake environment. Participants gain insight and skills on how the program can become part of your routine prenatal care screening process. The deadline to register is October 2!

REGISTER

2022-2023 SOPHE OFFICERS

PRESIDENT

Amy Thompson, PhD, CHES®

PRESIDENT-ELECT

Raffy R Luquis, PhD, MCHES®

SECRETARY

Cynthia Karlsson, MPH, MS, CHES®

TREASURER

William H. Potts-Datema, DrPH, MS, MCHES®

IMMEDIATE PAST PRESIDENT

Deborah Fortune, PhD, Faahe

TRUSTEES

TRUSTEE, ADVOCACY & RESOLUTIONS

Sabrina Tindal Cherry, DrPH, MSPH, MTS

TRUSTEE, 2023 ANNUAL CONFERENCE

Tamara Mason, MPH, CHES®

TRUSTEE, 2022 ANNUAL CONFERENCE

Kirsten C. Rodgers, EdD, MSPH, MCHES®

TRUSTEE, COMMUNICATIONS

Ashley S. Love, DrPH, DHSc, MPH, MS, CPH, CHC

TRUSTEE, MEMBERSHIP & LEADERSHIP DEVELOPMENT

Antonio Gardner, PhD, MS, CHES®

TRUSTEE, PROFESSIONAL DEVELOPMENT & CONTINUING EDUCATION

Ninfa Peña-Purcell, PhD, MCHES®

TRUSTEE, PROFESSIONAL PREPARATION

Ashley Parks, DrPH, MPH, MBA, MTech, MCHES®, CPH

TRUSTEE, PUBLICATIONS

Lisa Lieberman, PhD, CHES®

TRUSTEE, RESEARCH & ETHICS

Rhonda Rahn, PhD, MS, CHES®

STRATEGIC INITIATIVES

Cherylee Sherry, MPH, MCHES®

STUDENT TRUSTEE

Sally Ayers Klimek, MPH, CHES®

SPEAKER, HOUSE OF DELEGATES

Tara Lutz, PhD, MPH, MCHES®

SPEAKER ELECT, HOUSE OF DELEGATES

Michele Bildner, MPH, MCHES®

DELEGATE TRUSTEE – TRUSTEE

Josephine Lara, MPH

DELEGATE TRUSTEE

Tina Mooney, MPH, CHES®

Do you need to contact SOPHE national staff?

Chief Executive Officer

Tammy Dillard-Steels [she, her, hers] CEO
tdillard-steels@sophe.org

Finance & Administration

Daniel Anbiah [he, him, his]
Director of Finance & Administration
danbiah@sophe.org

Cheng-Jung Iris Chou [she, her, hers]
Accounting Assistant & Technology Manager
ichou@sophe.org

Jade Hackley [pronouns she, her, hers]
Office & Project Associate
jhackley@sophe.org

Communications & Publications

Zebley Diaz [she, her, hers]
Editorial & Communications Manager
zfoster@sophe.org

Brigitte W. Johnson [she, her, hers]
Director of Communications & Publications
bjohnson@sophe.org

Jeanine Robitaille [she, her, hers]
Editorial Manager
jrobitaille@sophe.org

Grants Administration & Programs

Chelsey Hughes [she, her, hers]
Project Manager, Grants
chughes@sophe.org

Clarissa Montes [she, her, hers]
Grants Coordinator
cmontes@sophe.org

Doreleena Sammons-Hackett [she, her, hers]
Director, Grant Administration
dsammons-hackett@sophe.org

Lauren Su [she, her, hers]
Public Health Associate
lsu@sophe.org

Membership, Marketing & Chapter Relations

Shadia Henson [she, her, hers]
Manager of Membership & Chapter Relations
shenson@sophe.org

Tom Webb [he, him, his]
Director of Membership, Marketing & Chapter Relations
twebb@sophe.org

Professional Development

Kelly French [she, her, hers]
Director of Professional Development
kfrench@sophe.org

Sana Siddique [she, her, hers]
Coordinator, Professional Development
ssiddique@sophe.org

SOPHE seeks member volunteers

who want to put their leadership skills to work. Consider running for one or several open board of trustee positions. SOPHE actively recruits a diverse slate of members for the board of trustees, who would start their terms in March 2023. [Learn more about the possibilities.](#) Together, we can ensure that SOPHE has a strong and vibrant future!

Greetings, I hope you had an enjoyable summer, resting, and preparing to thrive in these changing times. In the six months since I assumed the CEO role at SOPHE, I have had many conversations with members, leadership, and partners to understand the profession's challenges and how to overcome them. I've learned more about how SOPHE can provide services and resources to help members succeed moving forward. I thank those who have shared your opinions and vision with me.

Your concerns about staffing were loud and clear. I heard that the infrastructure of SOPHE must be strong and agile. Building a team ready to address the challenges health educators face has been one of my priorities. Several staff members were realigned and promoted. Join me in welcoming Jade Hackley, Clarissa Montes, Kelly French, and Tom Webb, who joined the SOPHE staff within the last six months.

Another significant focus is understanding SOPHE's rich history to create a better future. We are working to ensure that diversity, equity, inclusion and access is a priority for all programs, membership, leadership, and staff.

Returning from the past are in-person meetings. SOPHE's Advocacy Summit and annual conferences which have been virtual since 2020 are returning to in-person gatherings – a feat the team is enthusiastically working toward.

I hope that you are making plans to reunite with colleagues at the 24th Annual Advocacy Summit in Washington, D.C., on Saturday, October 22 – Monday, October 24, 2022! This year's summit theme is "Youth Health Equity: Forging the Path for an Inclusive Future." SOPHE has an engaging line-up of keynote speakers, researchers, panelists, and students leading the charge to create and sustain equitable spaces for youth. New this

year is a student poster track: Health Advocacy for Youth. I hope to see you this fall!

I'm optimistic about the future and the exciting journey ahead. I look forward to promoting SOPHE and its new mission, "Supporting leaders in health education and promotion to advance healthy and equitable communities across the globe."

SOPHE staff will continue building new and vital partners to help to elevate SOPHE's vision and create sustainable growth for the health education profession.

Thank you for being a member, and I look forward to our paths crossing soon.

Respectfully,

Tammy Dillard-Steels, MPH, MBA, CAE
Chief Executive Officer

“**SOPHE staff will continue building new and vital partners to help to elevate SOPHE's vision and create sustainable growth for the health education profession.**”

”





WELCOME NEW SOPHE MEMBERS

(April – June 2022)

Mohamed Abbas Fagiri	Rebecca Drennan
Grace Adams	Britney Duncan
Jesus Aleman	Odunayo Elijah
Susan Andreae	Amy Francia
Cerra Antonacci	Andrea Franco
Catherine Apostol	Nichole Gipe
Marcia Ash	Whitney Gorsegrner
Asma Awan	Gabrielle Gurian
Hanna Burnett	Casey Habetler
Lisa Calhoun	Joy Harris
MacKenzie Carter	Safiyyah Hassan
Justine Castro	Tracy Herrmann
Isaac Cazares Triance	Keri Hill
Marcus Cheatham	Kelly Holtz
Erika Chen	Habibah Jabbar
Lisa Coakley	Christy Jensen
Samaurrii Coleman	Delanie Johnson
Joella Coles	R. Kelley
Christopher Comber	Elizabeth Kleitz
Brooke Conklin	Sakiera Malone
Alexandra Copeland	Jordan Mastrocola
Jamil Cromartie	Ben Merzouk
LeConte Dill	Ragha Mohan



SOPHE Member Spotlight



Tyra Montour

Tyra Montour, MPH, is a graduate research assistant at Texas A&M University in College Station, Texas. The daughter of a close-knit Haitian family, she was raised in Georgia. After receiving her BA in communication and new media from Gardner Webb University in North Carolina, she obtained her MPH from Morehouse School of Medicine in Atlanta.

She chose a career in health to make a positive impact among Haitian communities that have not received the proper resources and information regarding health issues. The future is exciting for her since she can work on the ground with these communities in need.

If she was not in her current position, Tyra would like to be a health communications CDC fellow. After completing her undergraduate studies, she worked as a publicity assistant doing social media and public relations for restaurants and different brands across Atlanta.

The best career advice she received was, “Work smarter not harder.”

Tyra would offer the following career advice, “Remember this is your journey and define success for yourself not others. So, when planning your journey (career) stay focused on the steps you need to take to reach that success.”

When Tyra is not working, she walks dogs in her community. Since she’s away from home and her family pets, dog walking helps decrease her stress level, plus she gets to spend time with great animals.

Additionally, Tyra loves trying new restaurants and exploring different cuisines. Living in Texas there is a variety of cultures and big food scene, so she has an opportunity to eat delicious food. She enjoys working out and shopping with small or up and coming designers from all over the world.

Her media mix includes NPR, Twitter, funny content creators, watching “Insecure,” “Dexter,” “New Girl,” and “Love Island.” Tyra also played the piano for 10 years.

Tyra is a three-year member of SOPHE.

We would love to spotlight you!
[Complete the questionnaire](#)



Q&A

Pedagogy in Health Promotion (PHP)



Photo credit University of Maine Farmington

One-on-One with Dr. Kelly Bentley

Dr. Kelly Bentley is an associate professor at the University of Maine, Farmington with over 24 years of experience working in community health. Her work has focused on women's health, mothering, intimate partner violence and health policy. Prior to taking on the newly appointed role as deputy editor, Kelly served on PHP's editorial board for over four years and served as a guest editor for two of PHP's special issues, both published in December 2021.

What is your favorite part about being a deputy editor for PHP?

Being a deputy editor for PHP is rewarding. It gives me an opportunity to connect to new colleagues and guide them through the editorial process. I also get to read about all the great things that are happening in public health classrooms and help ensure that their best practices are disseminated to the rest of our colleagues.

If you could put together your ideal issue, what topics would it include?

This is a very hard question! There are a few areas that I think are timely. Exposure to extreme weather, heat waves, air pollution and insect-borne diseases — clearly climate change is a health emergency. Gun violence is a leading cause of premature death in the U.S. killing more than 38,000 people and causing significant issues each year.

Both of these issues are complex with deep roots articles focusing on curriculum and course development in these areas would make significant contributions to the growing public health workforce.

What advice to you have for aspiring authors looking to submit their work?

Don't be afraid – reach out to Editorial staff with your questions and ideas. We are here to support you.

What are some of you recommended reads for PHP (I know this is a hard question)

There are too many to choose from but some of my favorites are:

Harvey, M. (2020). How do we explain the social, political, and economic determinants of health? A call for the inclusion of social theories of health inequality within US-based public health pedagogy. *Pedagogy in Health Promotion*, 6(4), 246-252.

Fleming, P. J. (2020). The importance of teaching history of inequities in public health programs. *Pedagogy in Health Promotion*, 6(4), 253-256.

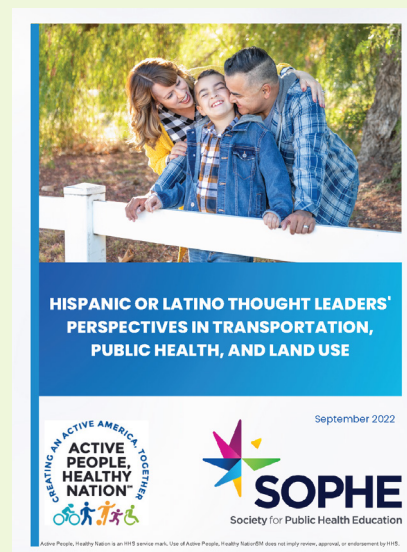
Coombe, C. M., Schulz, A. J., Brakefield-Caldwell, W., Gray, C., Guzman, J. R., Kieffer, E. C., ... & Israel, B. A. (2020). Applying experiential action learning pedagogy to an intensive course to enhance capacity to conduct community-based participatory research. *Pedagogy in health promotion*, 6(3), 168-182.

What do you think would surprise people about being an editor?

I think people realize that it is a lot of work to bring articles and an issue to fruition, but I am not sure if they realize how long it, from beginning to end, that the process can actually take.

Health Promotion Practice (HPP)

Health Promotion Practice proudly announces, “Poetry for the Public’s Health,” an invitation to co-create a new canon of public health and health promotion scholarship. This introductory section of poetry will be included in every upcoming issue of HPP. **Check out the very first poetry section!** Remember as a SOPHE member benefit, you have access to download and read articles in all three SOPHE journals by signing in via your **My.SOPHE account**.



In collaboration with the Center for Disease Control and Prevention’s Division of Nutrition and Physical Activity, SOPHE releases the report, **“Hispanic or Latino Thought Leaders Perspectives in Transportation, Public Health, and Land Use.”** Through an environmental scan and interviews with Hispanic and Latino thought leaders, this comprehensive report summarizes barriers and racial inequities on routes to destinations that influence nutrition and physical activity outcomes of Hispanic or Latino individuals and communities. The work performed by the Fernandez Research Group, LLC. Download and read the report.

Health Education & Behavior (HE&B)

Health Education & Behavior has been hard at work developing its first ever student issue. Tentatively launching next spring, the “Future of Health Education: Student Perspectives” features commentaries, brief reports, and original manuscripts with students as the first author. Authors will cover an array of topics such as Blackness/Black futures, ableism, democracy and civil rights, health movements, gender, white supremacy, and more. This issue is supported by a group of guest editors and guest editorial board made up of faculty and students.



Guest Editors

Cindy Le, University of California-Los Angeles
Leah Neuhbauer, Northwestern University
Nicole Robinson, University of Wisconsin-Milwaukee
Paul Fleming, University of Michigan-Ann Arbor

Guest Editorial Board

Amanda Grimes, University of Missouri, Kansas City
Andre Fedd, University of Georgia
Carlene Robinson, Georgia Southern University
Caroline Barry, Emory University
Jennifer Banas, Northeastern Illinois University
Katherine Anderson, Emory University
Krista Mincey, Mercer University
Lucas Cardoso da Silva, Erasmus University Rotterdam
Rachael Nolan, University of Cincinnati
Rachel Sadlon, The George Washington University
S. Fawad Shah, Jackson State University



Welcome Tom Webb

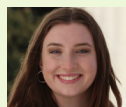


Tom is SOPHE's Director of Membership, Marketing and Chapter Relations. He is responsible for designing and implementing SOPHE membership growth and retention strategy that aligns with SOPHE's strategic objectives and improve SOPHE's chapter relations. In addition, Tom will focus on developing partnerships with sponsors and exhibitors and for managing relationships with key stakeholders. With over 20 years of experience in both the nonprofit and private sectors and an extensive background in membership and marketing, Tom has worked with such agencies as the Occupational Safety and Health Administration, the Department of Labor, and the Health and Human Services Administration under numerous roles.

Amy Overby

Director of Fund Development, resigned in August. We wish her the best in her next endeavors. For questions regarding Sponsorship contact Tom Webb - TWebb@SOPHE.org.

Welcome SOPHE Fall Intern



Bethany Sheehan

Bethany Sheehan is a senior at George Washington University, majoring in public health with minors in biology and political science. She is entering her second year in the BS/MPH dual degree program with a concentration in global health epidemiology and disease control. She is also a proud member of Georges Army, student theater, and the GW Funkers a cappella group. Bethany is looking forward to gaining experience and knowledge at SOPHE in the fall 2022 semester.

SOPHE selected as Healthy People 2030 Champion

Improve health and well-being for all with Healthy People 2030

Since 1980, the Healthy People initiative has set goals and measurable objectives to improve health and well-being in the United States. The initiative's fifth edition, Healthy People 2030, builds on knowledge gained over the past 4 decades to address current and emerging public health priorities and challenges.

An interdisciplinary team of subject matter experts developed national health objectives and targets for the next 10 years. These objectives focus on the most high-impact public health issues and reflect an increased focus on the social determinants of health — how the conditions where people live, work, and play affect their health and well-being.

By using Healthy People 2030 in your work, you can help improve health nationwide! Objectives are organized into intuitive topics so you can easily find data that's relevant to your work. And Healthy People 2030 provides evidence-based resources and tools you can use to set strategies for reaching Healthy People targets in your community, state, or organization. Start exploring Healthy People 2030 today!

Member on the Move

Health Education & Behavior's editor-in-chief, Jesus Ramirez-Valles, PhD, MPH, was named chief of the Division of Prevention Science at the University of California San Francisco. An accomplished researcher, academic, scholar, filmmaker and public health leader, Jesus will also hold the Walter Gray Endowed Chair in HIV/AIDS Science of the AIDS Research Institute. Jesus's work is deeply rooted in the social and behavioral sciences and strongly focused on health equity and community engagement. His research and advocacy have centered on the challenges of health and health care for at-risk communities, including children, LGBTQI populations, people of color, and women. He has published more than 50 articles and book chapters, and two books. He is in his fourth year as HE&B's editor-in-chief. Prior to HE&B, Jesus was editor-in-chief of Health Promotion Practice.

If you have news to announce, send it to news@sophe.org.

School Health Updates

[Institute for Higher Education Academy](#)

This summer, SOPHE hosted the Institute for Higher Education Academy (IHE Academy). The IHE Academy is for collegiate health and physical education faculty working in teacher preparation and general teacher preparation or other similar disciplines.

The academy trains participants on the essential tools required to teaching health education and physical education in K-12 schools. The focus is on health education teacher preparation. Presenters included renowned leaders in the health education and school health teacher preparation fields.

[Health Education Curriculum Analysis Tool \(HECAT\) Training*](#)

Recordings of SOPHE's Health Education Curriculum Analysis Tool training are available on-demand via SOPHE's CORE. To access these sessions, log into CORE with your My.SOPHE account. Speakers of this event included Dr. Bonnie Edmondson, professor emerita, School Health Education, Southern Connecticut State University and Susan K. Telljohann, HSD, CHES®, consultant trainer at Advancing Health Equity and professor emeritus of Health Education at The University of Toledo.

HECAT provides valuable information to assist school districts in the scope and sequence development process. The HECAT articulates the National Health Education Standards, identifies the expected outcomes ("Healthy Behavior Outcomes") of specific health content areas, and

identifies the essential knowledge and skill expectations that directly relate to each healthy behavior outcomes by standard and grade level. The information in the HECAT can be used to expedite the development or modification of a health education scope and sequence.

**By viewing recordings, one is not certified to conduct a digital training of trainers on the Characteristics of Effective Health Education Curricula or HECAT.*

[School Health Microlearning](#)

Check out SOPHE's School Health Education Teacher Preparation Model Guidance video available on SOPHE's CORE - eLearning website! This short, focused video demonstrates how school health education professionals and program leaders are using tools. Create your free MySOPHE account today to access more school health resources!

[New HECAT e-Learning Series](#)

The CDC recently updated the Health Education Curriculum Analysis Tool (HECAT) to strengthen research-based guidance for schools in selecting, developing, or revising health education curricula based on the latest evidence. As a part of the update, CDC created a new eLearning series. These videos provide an overview and cover specific health-topic modules. Each video provides data describing youth behaviors, experiences, and outcomes on the health topic; student-level knowledge and skill objectives to be addressed by health education curricula; tools and resources to prevent or reduce health risks.



Did you know that Hispanic and Latino populations comprise the largest minority group in the United States—18.5% of the overall population? However, Hispanic and Latino professionals make up just 12.7% of the state and local public health workforce.

To address this lack of representation of Hispanic and Latino professionals in the public health workforce, SOPHE is launching the Step-UP Pipelines Program. Increasing Hispanic and Latino representation is a critical step to address racial health inequities. A workforce that represents the population they serve is better equipped to meet the needs of a diverse community. [Read more about SOPHE's Step UP Pipelines.](#)