



# sophe

Atlanta  
March 17–20, 2020

annual  
conference

*Linking Science & Social Justice:  
Health Education as a Catalyst for Change*



The University of Florida's Department of Health Education and Behavior fosters leaders who become assets to their communities. Our students develop professional skills while learning how to plan, implement, and evaluate effective health programs. They also join an active network of innovators committed to building and maintaining a healthier world.

# Become a Leader in Health Education and Behavior

**UF** | Health Education & Behavior  
College of Health and Human Performance

Contact an Enrollment Advisor to find out how we can help you reach your goals.  
**Allison McPhillips** | (888) 633-9137 | [amcphillips@ufl.edu](mailto:amcphillips@ufl.edu)



Flexible on-campus and fully online M.S. in Health Education & Behavior programs

Multiple tracks to help students succeed in community, government, clinical and corporate sectors

Equips students for the Certified Health Education Specialist (CHES®) Exam

Doctoral program prepares students for careers in health behavior research and practice

# CONFERENCE OVERVIEW

## Linking Science & Social Justice: Health Education as a Catalyst for Change

March 17-20, 2020 | Atlanta, Georgia

### WELCOME

You are invited to engage with health education and promotion colleagues to build your network. While you are with us, listen and learn as others share their progress and impact in the health education and promotion field across the country and around the world. Select from over 300 scientific and practitioner-focused presentations and posters to expand your mind and portfolio with cutting-edge health education research, policy and practice.

### CONFERENCE OBJECTIVES

This 2 ½ day conference enables you to:

- Discuss innovative research programs informed by the health education and health promotion practice and initiatives grounded in evidence-based research.
- Evaluate the efficacy and effectiveness of health education and health promotion programs that address the well-being of children, adolescents and young adults.
- Identify effective strategies that address the determinants of health and improve health outcomes for all, especially the vulnerable, underserved, and/or diverse populations.
- Explore opportunities to enhance the knowledge, motivation, and skills of health educators, and the culture of health education and health promotion as a profession.
- Apply newly discovered health education and health promotion knowledge and strategies to address emerging and re-emerging issues that affect health, innovations in systems and technology, and research methods and projects.

### CONTINUING EDUCATION

An application has been approved to award Certified Health Education Specialists (CHES®) and/or Master Certified Health Education Specialists (MCHES®) up to 25.5 Category 1 Continuing Education Contact Hours (CECHs). A maximum of 28.0 advanced-level CECHs are available. The National Commission for Health Education Credentialing, Inc. has approved SOPHE and its chapters as designated multiple-event providers of CECHs in health education. SOPHE is a provider of Certified in Public Health (CPH) Renewal Credits. This conference has been approved to award up to 25.5 CPH Renewal credits.

### TABLE OF CONTENTS

SOPHE Leadership .....	3
Schedule at-a-Glance .....	4-10
Social Media Ambassadors .....	11
Conference Highlights and General Information.....	12-13
2020 Award Recipients.....	14-15
Detailed Schedule.....	18-31
Conference Posters.....	32-36
2020 Planning Committee.....	38
Thanks to AOMs .....	39
2020 Legacy Donors.....	40
Thank you Exhibitors and Sponsors .....	42-43
Map of Sheraton.....	45

### LOCAL SUPPORTING CHAPTER

Special thank you to **Georgia SOPHE**, our 71st annual conference co-sponsor! Visit the Georgia SOPHE hospitality table next to the Georgia registration area to learn more about the chapter and the attractions, places and special events you do not want to miss while in Atlanta!



## LOOKING TO EARN CE?

Your SOPHE 2020 registration includes continuing education fees. If you did not designate in your online registration that you wish to receive continuing education credits, please visit the registration area for more information about how you can receive CE credits.





## **SAVE THE DATE: October 17-19, 2020** **22nd Annual Advocacy Summit**



ATTENDEES SPEND AN ENGAGING 2.5 DAYS IN SKILL-BUILDING WORKSHOPS DESIGNED TO DEVELOP AND HONE THEIR ADVOCACY SKILLS, WITH THE FINAL DAY OF THE SUMMIT SPENT VISITING POLICYMAKERS ON CAPITOL HILL.

SESSIONS PROVIDE UPDATES ON PRIORITY AREAS FROM A DIVERSE GROUP OF PUBLIC HEALTH, EDUCATION, AND HEALTH POLICY EXPERTS

[WWW.SOPHE.ORG](http://WWW.SOPHE.ORG)

| 202.408.9804

| @SOPHETWEETS

# SOPHE LEADERSHIP

## **SOPHE 2019-20 OFFICERS**

PRESIDENT: Jean Breny, PhD, MPH  
PRESIDENT-ELECT: Cam Escoffery, PhD, MPH, CHES®  
TREASURER: Jeffrey Goodman, MPH  
SECRETARY: Elaine Hicks, MS/LIS, MPH, MCHES®  
IMMEDIATE PAST PRESIDENT: Angela Mickalide, PhD, MCHES®  
TRUSTEE 2020 ANNUAL MEETING: Elizabeth Stevenson, MPH  
TRUSTEE 2019 ANNUAL MEETING: Ping Johnson, PhD  
TRUSTEE MEMBERSHIP & LEADERSHIP: Keon L. Gilbert, DrPH, MA, MPA  
TRUSTEE RESEARCH & ETHICS: Gayle Walter, PhD, MPH, CHES®  
TRUSTEE COMMUNICATIONS: Raffy R Luquis, PhD, MCHES®  
TRUSTEE PUBLICATIONS: Jody O. Early, PhD, MS, MCHES®  
TRUSTEE PROFESSIONAL DEVELOPMENT: Nicolette Warren Powe, DrPH, MCHES®  
TRUSTEE ADVOCACY & RESOLUTIONS: Heidi Hancher-Rauch, PhD, CHES®  
TRUSTEE PROFESSIONAL PREPARATION: Randall Cottrell, DEd, MCHES®  
TRUSTEE SPECIAL INITIATIVES: Cherylee Sherry, MPH, MCHES®  
STUDENT TRUSTEE: Meghan Burroughs, PhD, MA, CHES®  
SPEAKER OF THE HOUSE: Shanna Livermore, MPH, MCHES®, FRSPH  
DELEGATE TRUSTEE: Katie Miller, MPH, CHES®  
DELEGATE TRUSTEE: Kaitlin Cartoccio, MPH, CHES®, DRCC  
DELEGATE TRUSTEE: Molly Brown, MPH

## **SOPHE 2020-21 OFFICERS**

PRESIDENT: Cam Escoffery, PhD, MPH, CHES®  
PRESIDENT-ELECT: Deborah Fortune, PhD, FAAHE  
TREASURER: Jeffrey Goodman, MPH  
SECRETARY: Rachael Dombrowski, PhD, MPH  
IMMEDIATE PAST PRESIDENT: Jean Breny, PhD, MPH  
TRUSTEE 2021 ANNUAL MEETING: Darcell Scharff, PhD  
TRUSTEE 2020 ANNUAL MEETING: Elizabeth Stevenson, MPH  
TRUSTEE MEMBERSHIP & LEADERSHIP: Antonio Gardner, PhD, MS, CHES®  
TRUSTEE RESEARCH & ETHICS: Jody Vogelzang, PhD, RDN, CHES®, FAND  
TRUSTEE COMMUNICATIONS: Beth Chaney, PhD, MCHES®  
TRUSTEE PUBLICATIONS: Jody O. Early, PhD, MS, MCHES®  
TRUSTEE PROFESSIONAL DEVELOPMENT: Nicolette Warren Powe, DrPH, MCHES®  
TRUSTEE ADVOCACY & RESOLUTIONS: Heidi Hancher-Rauch, PhD, CHES®  
TRUSTEE PROFESSIONAL PREPARATION: Ashley Parks, DrPH, MBA, MCHES®, CPH  
TRUSTEE SPECIAL INITIATIVES: Cherylee Sherry, MPH, MCHES®  
STUDENT TRUSTEE: Rebecca Rich, MA, CHES®  
SPEAKER OF THE HOUSE: Molly Brown, MPH  
DELEGATE TRUSTEE: Katie Miller, MPH  
DELEGATE TRUSTEE: Kaitlin Cartoccio, MPH, CHES®  
DELEGATE TRUSTEE: Charity Bishop, MA, CHES®

## **SOPHE STAFF**

CHIEF EXECUTIVE OFFICER  
M. Elaine Auld, MPH, MCHES®  
DIRECTOR, PROFESSIONAL DEVELOPMENT  
Maricela Arias-Cantu, MS, MHA  
MANAGER, SCHOOL HEALTH  
Jordan Buckley, MPH, CHES®  
INTERN  
Alma "Lizzie" Davalos, BS(c), CNA  
MANAGER, MEMBERSHIP & MARKETING  
Heather Flattery, MPH, CHES®  
EDITORIAL & COMMUNICATIONS MANAGER  
Zebley Foster, BA  
PROJECT COORDINATOR, POLICY & PROGRAMS  
Eryn Greaney, BA  
CHIEF POLICY & PROGRAMS OFFICER  
Cicily Hampton, PhD, MPA  
MEMBERSHIP COORDINATOR & OFFICE MANAGER  
Shadia Henson, BA  
DIRECTOR, COMMUNICATIONS & TECHNOLOGY  
Brigitte Johnson, APR, MSM  
INTERN  
Namrata Khanal, BSN, RN  
PROJECT MANAGER, SCRIPT®  
Liz Marshall, MPH, ICCE  
EDITORIAL MANAGER  
Jeanine Robitaille, MS, CHES®  
PROJECT DIRECTOR  
Doreleena Sammons Hackett, SM  
MANAGER, PROFESSIONAL DEVELOPMENT  
Antoinette Silva, MSA  
SENIOR DIRECTOR, FINANCE & ADMINISTRATION  
Jean Taliaferro, BS

## **SOCIETY FOR PUBLIC HEALTH EDUCATION**

10 G STREET, NE | SUITE 605 | WASHINGTON, DC 20002  
PHONE: 202.408.9804  
WWW.SOPHE.ORG

# SCHEDULE AT-A-GLANCE

TIME	CHANGING SYSTEMS	CHANGING MINDS	CHANGING PERSPECTIVES	CHANGING APPROACHES	CHANGING OUTCOMES
<b>TUESDAY, MARCH 17</b>					
8:30 AM – 5:00 PM	<b>SOPHE BOARD OF TRUSTEES MEETING</b> <i>Lunch sponsored by the HealthCare Georgia Foundation</i> Atlanta Ballroom 3, 4, & 5, Level 1				
8:00 AM – 5:00 PM	<b>ESG BOARD MEETING</b> Atlanta Ballroom 1, Level 1				
9:00 AM – 5:00 PM	<b>EXHIBITOR SET-UP</b> Grand Ballroom, Level 1				
9:00 AM – 5:00 PM	<b>CASE STUDY COMPETITION: GRADUATE AND UNDERGRADUATE</b> <i>Supported by the Foundation for the Advancement of Health Education (FAHE) and ETR</i> Conference Rooms 121, 123, and 125, Level 1				
10:00 AM – 7:30 PM	<b>REGISTRATION OPEN AND TICKETS FOR THE ATLANTA GAY MEN'S CHORAL PERFORMANCE</b> Georgia Registration, Level 1				
11:00 AM – 5:00 PM	<b>Δ PRE-CONFERENCE WORKSHOP: THE ROLE OF PUBLIC HEALTH LEADERS IN MANAGING CHANGE</b> Augusta, Level 2				
1:00 PM – 4:00 PM	<b>✓ PRE-CONFERENCE WORKSHOP: A POVERTY SIMULATION: ENGAGING IN PRACTICES THAT ADVANCE SOCIAL AND ECONOMIC JUSTICE</b> Athens, Level 2				
1:00 PM – 4:00 PM	<b>Δ PRE-CONFERENCE WORKSHOP: MAPPING ACADEMIC CURRICULUM TO THE UPDATED PRACTICE ANALYSIS RESULTS</b> Valdosta, Level 2				
5:30 PM – 6:30 PM	<b>SOPHE HOUSE OF DELEGATES MEETING</b> Atlanta Ballroom 3, 4, & 5, Level 1				
5:30 PM – 7:00 PM	<b>HPP 20<sup>TH</sup> ANNIVERSARY RECEPTION</b> <i>Invitation only</i> Savannah, Level 2				
7:30 PM – 9:00 PM	<b>UNITING OUR VOICES FOR CHANGE - ATLANTA GAY MEN'S CHORUS</b> <i>Tickets required</i> Mainstage: Grand Ballroom, Level 3				
<b>WEDNESDAY, MARCH 18</b>					
7:00 AM – 6:00 PM	<b>REGISTRATION AND SOPHE STORE OPEN</b> Georgia Registration, Level 1				
7:15 AM – 8:15 AM	<b>NEW MEMBERS &amp; FIRST-TIME ATTENDEES BREAKFAST</b> Atlanta Ballroom 3, 4 & 5, Level 1				
7:45 AM – 8:45 AM	<b>NCHEC BREAKFAST</b> <i>Pre-registration required</i> Capitol North, Level 1				
8:00 AM – 8:30 AM	<b>WEDNESDAY POSTER SET-UP</b> Georgia Hall Pre-function, Level 1				
11:00 AM – 7:30 PM	<b>EXHIBIT HALL AND POSTER HOURS</b> Georgia Hall Pre-function, Level 1				
9:00 AM – 11:00 AM	<b>OPENING PLENARY</b> <b>Δ 1.5 ADVANCED</b> Mainstage: Grand Ballroom, Level 3  <b>SOPHE WELCOME</b> <i>Elaine Auld, MPH, MCHES® and Elizabeth Stevenson, MPH</i>  <b>GREETINGS FROM CDC NATIONAL CENTER FOR CHRONIC DISEASE AND HEALTH PROMOTION</b> <i>Karen Hacker, MD, MPH</i>  <b>PRESIDENTIAL ADDRESS</b> <b>ADVANCING HEALTH EQUITY: TAKING AN ANTI-RACISM APPROACH TO HEALTH PROMOTION LEADERSHIP AND ACTION</b> <i>Jean Breny, PhD, MPH</i>  <b>HEALTH EDUCATION AND SOCIAL JUSTICE</b> <i>David Satcher, MD, PhD</i>				

Δ = ADVANCED LEVEL CE ✓ ENTRY-LEVEL CE



TIME	CHANGING SYSTEMS	CHANGING MINDS	CHANGING PERSPECTIVES	CHANGING APPROACHES	CHANGING OUTCOMES
11:15 AM – 12:45 PM			<p>✓ <b>A1: STUDENT WORKSHOP</b>  <b>WHO'S WHO IN HEALTH EDUCATION: LEARNING HOW TO MAKE THE BEST OUT OF YOUR NETWORK</b>                      Atlanta Ballroom 3, 4 &amp; 5, Level 1</p>		
11:15 AM – 12:45 PM		<p>✓ <b>A4: IGNITE90</b>  <b>IGNITING CHANGE IN HEALTH EDUCATION OR HEALTH EDUCATION AS A CATALYST FOR CHANGING OUTCOMES</b>                      Mainstage: Grand Ballroom, Level 3</p>	<p>Δ <b>A2: ORAL SESSION</b>  <b>DEMYSTIFYING PUBLISHING IN SOPHE PEER REVIEWED JOURNALS</b>                      Athens, Level 2</p> <p>✓ <b>A6: ROUNDTABLE</b>  <b>ENGAGING COMMUNITIES THROUGH COLLABORATIVE PARTNERSHIPS</b>                      Capitol North, Level 1</p>	<p>Δ <b>A3: ORAL SESSION</b>  <b>OVERVIEW AND EMERGING ISSUES FOR IMPLEMENTATION SCIENCE: CIRCLE OF RESEARCH AND PRACTICE</b>                      Capitol Center, Level 1</p>	<p>Δ <b>A5: ORAL SESSION</b>  <b>DELIVERING HEALTH EDUCATION IN CULTURALLY DIVERSE POPULATIONS</b>                      Capitol South, Level 1</p>
12:45 PM – 2:00 PM	<p><b>LUNCH</b>                      Concessions are available for purchase in Piedmont.</p> <p><b>WALKING TOUR</b>                      Meet at the registration area for a walking tour of downtown Atlanta.                      Tour departs at 12:50 pm</p>				
2:00 PM – 3:00 PM	<p>Δ <b>B1: ORAL SESSION</b>  <b>INTEGRATING SOCIAL EMOTIONAL LEARNING AND SCHOOL HEALTH EDUCATION: HOW CAN WE STOP 'COMPETING' AND START COLLABORATING?</b>                      Capitol South, Level 1</p>	<p>Δ <b>B3: ORAL SESSION</b>  <b>CROSS-SECTOR OUTREACH AND COLLABORATION: LESSONS AND STRATEGIES FROM THE FIELD</b>                      Athens, Level 2</p>	<p>Δ <b>B2: ORAL SESSION</b>  <b>LEVERAGING VARIOUS SECTORS AND PARTNERSHIPS TO VALIDATE HEALTH EDUCATION PRACTICE: RESULTS OF HESPA II</b>                      Mainstage: Grand Ballroom, Level 3</p> <p>✓ <b>B4: ORAL SESSION</b>  <b>ARTS &amp; PUBLIC HEALTH IN AMERICA: CREATING HEALTHY COMMUNITIES</b>                      Atlanta Ballroom 3, 4 &amp; 5, Level 1</p> <p>Δ <b>B5: ORAL SESSION</b>  <b>ADDRESSING TRAUMA AND VIOLENCE IN SCHOOLS AND COMMUNITIES</b>                      Capitol North, Level 1</p>		
3:00 PM – 3:15 PM	<p><b>BREAK</b>                      Refreshments provided in the Exhibit Hall.                      Sponsored by Wiley Publishing</p>				
3:00 PM – 4:00 PM	<p><b>PROFESSIONAL PREPARATION COMMITTEE MEETING</b>                      Georgia 13, Level 1</p>				

# SCHEDULE AT-A-GLANCE (CONT.)

TIME	CHANGING SYSTEMS	CHANGING MINDS	CHANGING PERSPECTIVES	CHANGING APPROACHES	CHANGING OUTCOMES
3:15 PM – 4:45 PM	<b>PLENARY 2</b> <b>Δ 1.5 ADVANCED</b> Mainstage: Grand Ballroom, Level 3  <b>ADVANCING SOCIAL JUSTICE: MOBILIZING THE POWER OF ARTS AND CULTURE IN PUBLIC HEALTH</b> Mainstage: Grand Ballroom, Level 3 Moderator: Collins O. Airhihenbuwa, PhD, MPH Ken Rose, MPA, Jill Sonke, PhD, MA, Stacey Springs, PhD, Kathy Le Backes, MPH  <b>ANNOUNCEMENT OF STUDENT CASE STUDY COMPETITION WINNERS</b> Karl Larson, PhD, MCHES® and Donna M. Videto, PhD, MCHES®, FAHE Vice President Supported by the Foundation for the Advancement of Health Education and ETR.				
5:00 PM – 6:00 PM	<b>SOPHE ALL-MEMBER BUSINESS MEETING</b> Light refreshments provided Mainstage: Grand Ballroom, Level 3				
5:00 PM – 6:00 PM	<b>✓ POSTER PROMENADE AND POSTER PRESENTATIONS</b> Georgia Hall Pre-function, Level 1				
6:00 PM – 7:30 PM	<b>OPENING RECEPTION</b> Georgia Hall, Level 1 Join your colleagues and meet new people for an evening of food, drinks (cash bar), networking, and fun! And, learn the latest resources and services from our exhibitors and earn prizes. Stop by the SOPHE Community of Practice tables to learn more about their activities.				
7:00 PM – 7:30 PM	<b>POSTER PRESENTERS TEAR DOWN POSTERS</b>				
7:00 PM – 8:30 PM	<b>STUDENT SOCIAL</b> Atlanta Ballrooms 3, 4 & 5 Supported by Walden University				

## THURSDAY, MARCH 19

7:00 AM – 6:00 PM	<b>REGISTRATION AND SOPHE STORE OPEN</b> Georgia Registration, Level 1				
7:30 AM – 8:30 AM		<b>Δ C1: ORAL SESSION</b> <b>CDC AND SCHOOL HEALTH RESOURCES</b> Capitol South, Level 1	<b>✓ C3: ORAL SESSION</b> <b>SELF-CARE FOR HEALTH EDUCATORS WITH YOGA</b> Atlanta Ballroom 1, Level 1  <i>Bring your yoga mat.</i>	<b>✓ C2: ORAL SESSION</b> <b>PRACTICAL APPLICATIONS AND BEST PRACTICES FOR HEALTH PROMOTION MATERIALS</b> Capitol Center, Level 1  <b>✓ C4: ORAL SESSION</b> <b>RESULTS AND LESSONS LEARNED FROM A DIGITAL TECHNOLOGY INITIATIVE FOCUSING ON YOUNG PEOPLE LIVING WITH HIV</b> Augusta, Level 2	<b>✓ C5: ORAL SESSION</b> <b>SOPHE'S ROLE AS A SPA IN ENTRY-LEVEL SCHOOL HEALTH EDUCATION TEACHER PREPARATION</b> Capitol North, Level 1
8:00 AM – 8:30 AM	<b>THURSDAY POSTER SET-UP</b> Georgia Pre-function, Level 1				
8:30 AM – 8:45 AM	<b>BREAK</b>				
8:30 AM – 5:00 PM	<b>EXHIBIT HALL AND POSTER HOURS</b> Georgia Hall Pre-function, Level 1				
8:45 AM – 10:15 AM	<b>PUBLICATIONS COMMITTEE MEETING</b> Atlanta Ballroom 2, Level 1				
8:45 AM – 10:15 AM	<b>CONTINUING EDUCATION COMMITTEE MEETING</b> Georgia 13, Level 1				

Δ = ADVANCED LEVEL CE ✓ ENTRY-LEVEL CE



TIME	CHANGING SYSTEMS	CHANGING MINDS	CHANGING PERSPECTIVES	CHANGING APPROACHES	CHANGING OUTCOMES
8:45 AM – 10:15 AM	<p><b>Δ D2: ORAL SESSION</b>  <b>BUILDING A MOVEMENT TO CHANGE THE NARRATIVE OF THE HEALTH OF AFRICAN AMERICAN WOMEN AND INFANTS</b>                      Capitol Center, Level 1</p>	<p><b>✓ D1: ESG ORAL SESSION</b>  <b>ENGAGING IN HEALTH EDUCATION PRACTICE</b>                      Atlanta Ballroom 3, 4 &amp; 5, Level 1</p>		<p><b>Δ D6: ROUNDTABLE PRACTICES AND POLICIES TO CONTROL THE USE OF CANNABIS AND TOBACCO</b>                      Capitol North, Level 1</p>	
	<p><b>Δ D4: ORAL SESSION</b>  <b>TIPS AND TOOLS FOR ADVOCATING FOR IMPROVED HEALTH FOR ALL</b>                      Mainstage: Grand Ballroom, Level 3</p>	<p><b>✓ D3: ORAL SESSION</b>  <b>CULTIVATING RESILIENT STUDENTS THROUGH CREATIVE TEACHING METHODS</b>                      Capitol South, Level 1</p> <p><b>Δ D5: INNOVATE TABLE</b>  <b>MEETING THE NEEDS OF NEW, MID-CAREER AND SEASONED HEALTH PROFESSIONALS THROUGH QUALITY TRAINING</b>                      Athens, Level 2</p>			
10:15 AM – 10:30 AM	<b>BREAK</b>				
10:30 AM – 11:45 AM	<p><b>PLENARY 3</b>  <b>Δ 1.5 ADVANCED</b>                      Mainstage: Grand Ballroom, Level 3</p> <p><b>JAMES F. AND SARA T. FRIES FOUNDATION AND CDC FOUNDATION AWARD AND LECTURE</b>                      Mainstage: Grand Ballroom, Level 3                      Moderator: Cam Escoffery, PhD, MPH, CHES®</p> <p><b>PRESENTATION OF THE 2020 ELIZABETH FRIES HEALTH EDUCATION AWARD</b>  <i>Viktor Bovbjerg, PhD - James F. and Sarah T. Fries Foundation and Lawrence W. Green, DrPH, ScD (Hon), Professor Emeritus, University of California, San Francisco</i></p> <p><b>MORE THAN MEDICINE: UPDATING THE NARRATIVE FOR IMPROVING POPULATION HEALTH</b>  <i>Robert M. Kaplan, PhD, Distinguished Professor of Health Services and Medicine, UCLA Schools of Public Health and Medicine</i></p>				
10:30 AM – 1:30 PM	<p><b>ESG BUSINESS MEETING AND NCHEC AWARD PRESENTATION</b>                      Atlanta Ballroom 3, 4 &amp; 5, Level 1                      Followed by a t-shirt exchange</p>				
11:45 AM – 1:30 PM	<p><b>LUNCH</b>                      Concessions are available for purchase in Piedmont.</p> <p><b>WALKING TOUR</b>                      Meet at the registration area for a walking tour of downtown Atlanta.                      Tour departs at 11:50 am.</p>				
12:00 PM – 1:00 PM	<p><b>Δ ADVANCING YOUR CAREER THROUGH SOPHE LEADERSHIP</b>                      Augusta, Level 2                      Antonio Gardner, PhD, MS, CHES®, Shanna Livermore, MPH, MCHES®, Angela Mickalide, PhD, MCHES®, Elaine Auld, MPH, MCHES® and Keon Gilbert, DrPH, MPH, MA</p>				
12:00 PM – 1:00 PM	<p><b>COMMUNITIES OF PRACTICE ROUNDTABLE NETWORKING</b>                      Courtyard, Pool Area</p>				
12:00 PM – 1:00 PM	<p><b>✓ POSTER PROMENADE</b>  <b>POSTER PRESENTATIONS AND LATE BREAKING STUDENT POSTERS</b>                      Georgia Hall Pre-function, Level 1</p>				

# SCHEDULE AT-A-GLANCE (CONT.)

TIME	CHANGING SYSTEMS	CHANGING MINDS	CHANGING PERSPECTIVES	CHANGING APPROACHES	CHANGING OUTCOMES
1:00 PM – 2:00 PM	<b>INTERNATIONAL UNION FOR HEALTH PROMOTION (IUHPE)/NORTH AMERICA REGIONAL OFFICE MEETING</b> Atlanta Ballroom 1, Level 1				
1:30 PM – 2:30 PM	<b>FACULTY DEPARTMENT HEAD MEETING</b> Georgia 13, Level 1				
1:30 PM – 2:30 PM	<p><b>Δ E2: ORAL SESSION</b> <b>TIPS AND TOOLS WHEN WORKING WITH ELECTED OFFICIALS</b> Capitol Center, Level 1</p> <p><b>Δ E6: ORAL SESSION</b> <b>CHANGING SYSTEMS IN GLOBAL HEALTH EDUCATION WITH WOMEN AND STUDENTS</b> Capitol North, Level 1</p>			<p><b>✓ E1: ORAL SESSION</b> <b>A SPOTLIGHT ON CURRENT RURAL HEALTH EDUCATION</b> Augusta, Level 2</p> <p><b>✓ E3: ORAL SESSION</b> <b>ENVIRONMENTAL HEALTH: CDC</b> Athens, Level 2</p> <p><b>Δ E4: ORAL SESSION</b> <b>WHAT YOUTH NEED AND HOW SCHOOLS CAN HELP</b> Capitol South, Level 1</p> <p><b>✓ E5: IGNITE60</b> <b>NEW WAYS OF THINKING AND WORKING WITH A FOCUS ON THE NEEDS OF VULNERABLE POPULATIONS</b> Mainstage: Grand Ballroom, Level 3</p>	
2:30 PM – 2:45 PM	<b>BREAK</b>				
2:45 PM – 4:15 PM	<p><b>PLENARY 4</b> <b>Δ 1.5 ADVANCED</b> <b>IMPACT OF A CHANGING CLIMATE ON HEALTH &amp; POPULATIONS</b> Mainstage: Grand Ballroom, Level 3 Moderator: Lisa M. Carlson, MPH, MCHES®</p> <p><b>CLIMATE CHANGE AND HUMAN HEALTH</b> Paul J. Schramm, MS, MPH</p> <p><b>HEALTH PROFESSIONAL LEADERSHIP IN CLIMATE ACTION AND ADVOCACY</b> Rebecca Rehr, MPH</p>				
4:15 PM – 4:30 PM	<b>BREAK</b>				
4:30 PM – 5:30 PM	<p><b>✓ F2: ROUNDTABLE</b> <b>HEALTH COMMUNICATIONS AND CAMPAIGN MANAGEMENT</b> Capitol North, Level 1</p> <p><b>✓ F4: ORAL SESSION</b> <b>YOUTH ADVOCACY AND TOBACCO POLICY</b> Athens, Level 2</p> <p><b>✓ F5: ORAL SESSION</b> <b>PUBLIC HEALTH ETHICS AND STRATEGY</b> Augusta, Level 2</p>		<p><b>Δ F1: ORAL SESSION</b> <b>RAISING THE NEED FOR FOOD ACCESS EDUCATION BY COLLABORATION</b> Capitol Center, Level 1</p> <p><b>Δ F3: ORAL SESSION</b> <b>HOW TO MAXIMIZE NONPROFIT MANAGEMENT</b> Capitol South, Level 1</p>		

Δ = ADVANCED LEVEL CE ✓ ENTRY-LEVEL CE

TIME	CHANGING SYSTEMS	CHANGING MINDS	CHANGING PERSPECTIVES	CHANGING APPROACHES	CHANGING OUTCOMES
4:30 PM – 5:30 PM	<b>RECEPTION HONORING 21ST CENTURY &amp; LEGACY DONORS</b> By Invitation Only Macon, Level 2				
6:00 PM – 7:15 PM	<b>AWARDS CEREMONY</b> Supported by SAGE Publishing, Inc. Mainstage: Grand Ballroom, Level 3				
7:15 PM – 8:30 PM	<b>AWARDS RECEPTION</b> Supported by Fairleigh Dickinson University - School of Pharmacy & Health Sciences and University of Southern California - MPH Online Program Mainstage: Grand Ballroom, Level 3				
7:00 PM – 7:30 PM	<b>POSTER PRESENTERS TEAR DOWN POSTERS</b> Georgia Hall Pre-function, Level 1				

**FRIDAY, MARCH 20**

6:30 AM – 7:00 AM	<b>POSTER SET-UP</b> Georgia Hall Pre-function, Level 1				
7:00 AM – 2:00 PM	<b>REGISTRATION AND SOPHE STORE OPEN</b> Georgia Registration, Level 1				
7:00 AM – 8:00 AM	<b>✓ POSTER PROMENADE AND POSTER PRESENTATIONS</b> Georgia Hall Pre-function, Level 1				
7:00 AM – 8:00 AM	<b>NATIONAL SOPHE PAST PRESIDENT'S BREAKFAST</b> Georgia 13, Level 1				
7:00 AM – 8:00 AM	<p><b>Δ G2: ORAL SESSION</b> <b>LAW AND PUBLIC HEALTH</b> Athens, Level 2</p> <p><b>✓ G3: ORAL SESSION</b> <b>THE LATEST ON BULLYING AND RECENT RESEARCH RESULTS</b> Capitol Center, Level 1</p>			<p><b>✓ G1: IGNITE60</b> <b>HOW TO IMPLEMENT WELLNESS IN OUR SCHOOLS</b> Augusta, Level 2</p> <p><b>Δ G4: ORAL SESSION</b> <b>KEEPING ISSUES RELEVANT: ZIKA VIRUS UPDATE</b> Capitol South, Level 1</p>	<p><b>✓ G5: LATE BREAKING SESSION</b> <b>NOVEL CORONAVIRUS 2019 (COVID-19): WHAT YOU SHOULD KNOW FOR EFFECTIVE RISK COMMUNICATION</b> Capitol North, Level 1</p>
8:00 AM – 8:15 AM	<b>BREAK</b>				
8:15 AM – 9:45 AM	<p><b>✓ H2: ORAL SESSION</b> <b>SCHOOL HEALTH: ADVOCACY &amp; POLICY</b> Capitol Center, Level 1</p>	<p><b>Δ H5: ORAL SESSION</b> <b>THE ART OF TEACHING</b> Capitol South, Level 1</p>	<p><b>Δ H4: ORAL SESSION</b> <b>EMERGING HEALTH EQUITY ISSUES AT THE BORDERLAND</b> Mainstage: Grand Ballroom, Level 3</p>	<p><b>Δ H1: ROUNDTABLE</b> <b>COLLABORATE BETWEEN EDUCATION LEADERS AND HEALTH SECTORS TO IMPROVE SCHOOL HEALTH</b> Capitol North, Level 1</p>	<p><b>✓ H3: ORAL SESSION</b> <b>ENVISIONING A TOBACCO-FREE WORLD: STRATEGIES TO ACHIEVE TOBACCO CESSATION AND PREVENTION EQUITY ACROSS THE LIFESPAN</b> Athens, Level 2</p> <p><b>✓ H6: ORAL SESSION</b> <b>70 YEARS OF EXPERIENCE - HOW SHOULD SOPHE MEET THE CHALLENGES OF THE FUTURE?</b> Augusta, Level 2</p>
9:45 AM – 10:00 AM	<b>BREAK</b>				

# SCHEDULE AT-A-GLANCE (CONT.)

TIME	CHANGING SYSTEMS	CHANGING MINDS	CHANGING PERSPECTIVES	CHANGING APPROACHES	CHANGING OUTCOMES
10:00 AM – 11:30 AM	<p>✓ <b>12: ORAL SESSION COLLEGE HEALTH AND WELLNESS</b> Athens, Level 2</p>	<p>Δ <b>11: ORAL SESSION SCHOOL HEALTH: NUTRITION &amp; PHYSICAL ACTIVITY</b> Capitol South, Level 1</p> <p>Δ <b>13: ORAL SESSION BEST PRACTICES AND HEALTH EDUCATION WITH FATHERHOOD</b> Capitol Center, Level 1</p> <p>✓ <b>14 ROUNDTABLE: SERVICE-LEARNING: WHAT IS IT? WHAT IS IT NOT? WHY SHOULD I CARE?</b> Capitol North, Level 1</p>		<p>✓ <b>16: LATE BREAKING ORAL SESSION NEW CDC RESOURCES TO ENHANCE YOUR HEALTH EDUCATION PRACTICE</b> Augusta, Level 2</p>	<p>Δ <b>15: ORAL SESSION COMBATTING THE OPIOID EPIDEMIC</b> Mainstage: Grand Ballroom, Level 3</p>
11:30 AM – 11:45 AM	<b>BREAK</b>				
11:45 AM – 1:15 PM	<p><b>CLOSING PLENARY</b></p> <p>✓ 1.5 ENTRY <b>ENSURING THE FUTURE OF CHILDREN &amp; FAMILIES</b> Mainstage: Grand Ballroom, Level 3 Moderator: Deborah Fortune, PhD, FAAHE</p> <p><b>FAHE AWARD ANNOUNCEMENTS</b> William Potts-Datema, DrPH, MCHES®, FAHE President</p> <p><b>ENSURING THE FUTURE OF CHILDREN &amp; FAMILIES</b> Jennifer Ng'andu, MPH</p> <p><b>PRESIDENT'S REMARKS AND CONFERENCE RECAP</b> Cam Escoffery, PhD, MPH, CHES®</p> <p><b>SEE YOU IN ST. LOUIS!</b> Darcell Scharff, PhD, Trustee 2021 Annual Meeting and Molly Brown, MPH, Speaker of the House</p>				
2:00 PM – 4:00 PM	<p><b>POST CONFERENCE: NUMERICAL HYGIENE: PROMOTING HEALTH NUMERACY IN PROFESSIONAL PREPARATION OF HEALTH EDUCATORS</b></p> <p>Δ 2.0 ADVANCED Capitol Center, Level 1 Pre-registration required</p>				
2:00 PM – 4:30 PM	<p><b>POST CONFERENCE: SCHOOL HEALTH: SOCIAL AND EMOTIONAL LEARNING</b></p> <p>✓ 2.5 ENTRY Capitol South, Level 1 Pre-registration required</p>				
<b>SATURDAY, MARCH 21</b>					
8:30 AM – 4:30 PM	<p><b>USING HECAT TO IMPROVE YOUR HEALTH EDUCATION PROGRAM</b> Athens, Level 2 Pre-registration required</p>				
9:00 AM – 4:00 PM	<p><b>BUILDING CAPACITY AND STRENGTHENING WSCC TEAMS: A SERIES OF TRAINING MODULES FOR STATES AND DISTRICTS</b> Atlanta Ballroom 1&amp;2, Level 1 Pre-registration required</p>				
<b>SUNDAY, MARCH 22</b>					
8:30 AM – 4:30 PM	<p><b>USING HECAT TO IMPROVE YOUR HEALTH EDUCATION PROGRAM</b> Athens, Level 2 Pre-registration required</p>				

Δ = ADVANCED LEVEL CE ✓ ENTRY-LEVEL CE



# SOCIAL MEDIA AMBASSADORS



Use the official #SOPHE2020 hashtag to:

- View updates
- Engage with colleagues and SOPHE
- Post and share live from the conference
- For tips and ideas, access the SOPHE social media toolkit (<https://tinyurl.com/t9hb534>)

## CHANGING MINDS



Jean Breny, PhD, MPH  
@drjeanieb



Gabriela Cardoso de  
Paula Rocha, MPH  
@GabrielaMPH



Christine Hall, MPH, MCHES  
@Chall\_JA



Keely Rees, PhD, MCHES<sup>®</sup>  
@Keely\_Rees

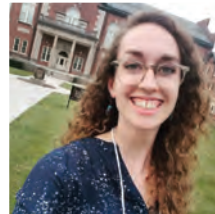
## CHANGING SYSTEMS



William Potts-Datema,  
DrPH, MCHES<sup>®</sup>  
@billpottsdatema



Marline D. Edmond,  
MA, CHES<sup>®</sup>  
@munchydaplug



Kaylan N. Fitch  
@FitchKaylan



Nandi A. Marshall,  
DrPH, CHES<sup>®</sup>  
@nandimarshall

## CHANGING PERSPECTIVES



Michelle L. Carvalho,  
MPH, MCHES<sup>®</sup>  
@michelle\_carva



Cam Escoffery,  
PhD, MPH, MCHES<sup>®</sup>  
@camescoffery



Shanna Livermore,  
MPH, MCHES<sup>®</sup>  
@ShannaLivermor2



Elaine Auld, MPH, MCHES<sup>®</sup>  
@MEAuld

## CHANGING APPROACHES



Jody O. Early,  
PhD, MCHES<sup>®</sup>  
@jody\_early



Mykaela Gardner  
@myk\_gardner



Nicolette Powe,  
DrPh, MCHES<sup>®</sup>  
@lette1922

## CHANGING OUTCOMES

# CONFERENCE HIGHLIGHTS

## WELCOME TO ATLANTA!

### **THEME: LINKING SCIENCE AND SOCIAL JUSTICE: HEALTH EDUCATION AS A CATALYST FOR CHANGE**

Health educators and health education skills have a powerful potential to create change. It is a profession geared for action with a focus on professional continuous improvement, building strong relationships and partnerships across sectors, and embracing the social realities that can make health elusive for many. This year's conference tackles the need for us to hone our skills, build our science and to address head on the challenges communities face. In a time when simple answers are rare, what can we do to "up our game" and to improve our skills and approaches to build equitable health outcomes for all. Our sub-themes for this conference all describe ways we can do more and do better by using our science and our passions.

1. **Changing Systems:** Policy, Advocacy, Communications
2. **Changing Minds:** The Art and Science of Teaching in Communities and Professional Preparation
3. **Changing Perspectives:** Leveraging Sectors, Engagement and Partnerships
4. **Changing Potential:** Emerging Issues in Research Translation and Implementation
5. **Changing Outcomes:** Health Education and the Continuum of Prevention and Care

### **Don't Miss these SOPHE 2020 Events!**

#### **ATLANTA GAY MEN'S CHORUS - UNITING OUR VOICES FOR CHANGE**

SOPHE is partnering with the Atlanta Gay Men's Chorus to raise our voices in support of health equity. Join in the celebration and enjoy the special evening event on Tuesday, March 17, 7:30 pm – 9:00 pm in the Sheraton Atlanta Hotel. The performance is guaranteed to be sensational with popular live music and songs. What better way to celebrate the thousands of professionals across the country who dedicate their lives to the research and practice of promoting health! Purchase your ticket(s) at registration.

#### **CHECK OUT OUR FEATURED GEORGIA MUSICIANS!**

Blues? African drums? MoTown? Old time? – and yes, the music of social justice! Join us for the passion and inspiration that music can provide. Our Georgia musicians will be kicking off plenary sessions and providing "pop-up" music to help us live the link between the arts and health impact.

#### **OPENING RECEPTION**

Join us on Wednesday, March 18, 6:00 pm – 7:30 pm, Georgia Hall, for an evening of food, drinks (cash bar), networking and fun at the opening reception. Connect with colleagues and welcome first-time attendees and students to the SOPHE 2020 Annual Conference. We encourage you to learn about the latest resources and services from our exhibitors and sponsors. The first hour will also include an Emerging Volunteers Meet & Greet – take the opportunity to learn how you can get involved with SOPHE in the coming year!

#### **WELCOME FIRST-TIME ATTENDEES AND NEW MEMBER WELCOME**

SOPHE extends a special welcome to all first-time annual conference attendees, designated with first-time attendee ribbons! Attend this special

breakfast on March 18 and learn more about SOPHE. Conference veterans, please introduce yourself and welcome them to the SOPHE family! New to SOPHE? You are invited to join us on Wednesday, March 18, 7:15 am – 8:15 am, in Atlanta Ballroom 3,4 & 5, to hear about SOPHE programs, benefits, and how you can get involved. Ideal for new members and first-time SOPHE conference attendees.

#### **STUDENT WORKSHOP AND SOCIAL**

The Student Workshop will be held on Wednesday, March 18, 11:15am – 12:45pm (Session A1). This session is a speed mentoring opportunity for students to meet and connect with more than 30 professionals in the field, working in a variety of settings and roles. All students are invited to attend the Special Student Social on Wednesday, March 17, 7:00pm – 8:30 pm.

#### **SOPHE ANNUAL ALL-MEMBER BUSINESS MEETING**

Join us on Wednesday, March 18 from 5:00 pm – 6:00 pm in the Grand Ballroom for SOPHE's All-Member Business Meeting. Hear about our recent accomplishments, future initiatives, and welcome your newly-elected board of trustees. Light refreshments will be served.

#### **AWARDS CEREMONY AND RECEPTION**

All attendees are welcome to this year's awards ceremony. Join your colleagues in honoring the SOPHE 2020 award winners on Thursday, March 19 from 6:00 pm – 7:15 pm in the Grand Ballroom. After the awards ceremony, join us for a celebratory reception! Mix and mingle with your fellow conference attendees in a relaxed atmosphere and enjoy hors d'oeuvres and a cash bar as we celebrate this year's award winners.

#### **COMMUNITY OF PRACTICE ROUNDTABLES**

Join discussions at one of the Community of Practice (CoP) Roundtables on Thursday, March 19, 12:00 pm – 1:00 pm at the Sheraton Courtyard (inside the pool area), to meet colleagues and exchange tips and ideas for enhancing your practice. Participate in roundtables for: Arts & Health; Child, Adolescent & School Health; Medical Care; Worksite; Tobacco; Healthy Aging; Health Equity; Global Health; Emergency Preparedness; Public Health Nutrition; Social Marketing/Health Communications; Students/New Professionals; University Faculty; and Environmental Health. Feel free to bring your lunch!

#### **Engage in Various Educational Formats!**

##### **IGNITE SESSIONS**

Due to popular demand, we have brought IGNITE sessions back. This year we have four Ignite concurrent sessions. Each session is a quick succession of 5-7 minute presentations to challenge your thinking and spark your interest in a variety of health education and health promotion topics.

##### **ROUNDTABLE AND INNOVATE TABLE SESSIONS**

SOPHE has included roundtable sessions that are intended to be more intimate settings where you can directly interact with the presenters and discuss their research and programs. New this year, we have a unique "I" seating style for the Innovate Table sessions to help create more engagement, interaction and INNOVATION! Presentations will switch every 10-20 minutes.

## POSTER PROMENADE

Plan to view and interact with the authors of over 130 posters that are on display on Wednesday, Thursday, and Friday. You will find the posters in the Georgia Hall Pre-function area. Each day there will be a Poster Promenade time when you can speak to the poster authors. CE credit will be offered for those who review the five highlighted posters each day and speak to the authors. Wednesday, March 18, 5:00pm – 6:00 pm; Thursday, March 19, 12:00 pm – 1:00 pm; Friday, March 20, 7:00 am – 8:00am.

## EARLY BIRD SESSIONS

Take note of the great early bird sessions that are offered on Thursday and Friday mornings! Attend these sessions to earn additional CE!

## STUDENT CASE STUDY COMPETITION

SOPHE, in conjunction with the Foundation for the Advancement of Health Education (FAHE) and ETR, are the proud sponsors for the Undergraduate and Graduate Student Case Study Competitions. Student teams from various universities around the nation will present their approach to a contemporary public health issue on Tuesday, March 17. Winning teams will be announced at the close of the Plenary on Wednesday, March 18, 3:15 pm – 4:45 pm.



### DOWNLOAD THE MOBILE APP

Download the Mobile App to gain access to select presentations, abstracts and speaker information, polling and more!

## SCAVENGER HUNT

Participate in the SOPHE 2020 Scavenger Hunt for your chance to win a fully-paid registration to SOPHE 2021 Annual Conference in St. Louis or SOPHE 2020 Advocacy Summit in Washington, D.C., and other prizes too! It's simple – take photos of each challenge and earn points. Check out the app to learn more! Winners announced during Plenary 5.

## Participate in these Wellness Opportunities!

### WELLNESS OPPORTUNITIES

Take time to re-energize your mind and body by participating in the following wellness opportunities:

- **Yoga** (along with a self-care session) on Thursday, March 19, 7:30 am – 8:30am.
- **Walking Tours** on Wednesday, March 18, 12:45 pm – 2:00 pm and Thursday, March 19, 11:45am – 1:30 pm. Please join us during lunch at the registration area for a walking tour of downtown Atlanta. Look for Matt Weinburke, Social Events planning committee member and others to accompany you on the tour. Download the mobile app for more information including a map to the city.

Own your own health and participate in the **SOPHE Walking Challenge**. Sign up as an Individual or join a team. Visit the general information of the mobile app for instructions to sign up.

SOPHE has joined the **Active People, Healthy Nation™ Initiative** to help 27 million Americans get more physically active by 2027. This initiative promotes effective strategies recommended by the Community Preventive Services Task Force to improve people's physical activity. The CDC in collaboration with state, community and national partners promote these proven strategies to ensure that all Americans have access to safe and accessible places for physical activity.

Share your physical activity successes from **#SOPHE2020** on social media using the hashtag **#ActivePeople** to spread the word.



*Active People, Healthy Nation is an HHS service mark. Use of Active People, Healthy Nation<sup>SM</sup> does not imply review, approval, or endorsement by HHS.*

# GENERAL INFORMATION

## EXHIBIT HALL

Please join SOPHE to welcome and thank the 2020 Exhibitors by visiting their booths in Georgia Hall. Come and see the publications, tools, and information from an array of organizations and universities. Their participation is a valuable contribution to the success of the SOPHE 2020 Annual Conference, so we ask that you take a few minutes to say hello and hear what they offer. Exhibit hall hours are 8:30 am – 7:00 pm on Wednesday and Thursday. Participate in the Scavenger Hunt. Refer to Conference Highlights for more information.

## FOOD & BEVERAGE OPTIONS

To keep registration fees as low as possible, meals are on your own. In addition to concession area in Piedmont, there are a number of nearby delis and restaurants. See the list in the SOPHE 2020 mobile app.

## SOPHE STORE

Celebrate SOPHE's 70th birthday by purchasing some SOPHE swag for yourself and your colleagues. Visit the Registration Desk during conference hours. Special store discounts!

## SAFETY & SECURITY

Please keep an eye on your personal items and do not leave items unattended in meeting rooms or common areas. Fire and safety information is detailed in the directory in your hotel room. Consult hotel staff members if you have questions about the surrounding area.

## MEDICAL EMERGENCIES

If you need assistance locating a doctor or clinic in the area, please contact the hotel staff or a SOPHE staff person. If you need immediate assistance, pick up any courtesy phone, or dial 9-1-1.

## HOSPITALITY TABLE

Georgia SOPHE members and students are pleased to provide you with information on things to do and see in Atlanta! Available in the conference registration area.

# 2020 AWARD RECIPIENTS

The SOPHE Awards Ceremony & Reception will take place on Thursday, March 19 from 6:00pm – 7:15pm in the Grand Ballroom at the Sheraton Atlanta Hotel. Tickets are not needed for this year's ceremony and reception, but are needed for guests. Be there to hear the motivational and inspirational stories about this year's award winners.

## DISTINGUISHED FELLOW AWARD

The Distinguished Fellow Award is the highest recognition to a SOPHE member. This award honors members who have made significant and lasting contributions to the Society and to the health education field.

PATRICIA DOLAN MULLEN, DRPH, MLS, UNIVERSITY OF TEXAS  
DISTINGUISHED TEACHING PROFESSOR

## HONORARY FELLOW AWARD

The Honorary Fellow Award is SOPHE's highest recognition to a non-member. It honors an individual who has made significant and lasting contributions to health education and public health.

STACEY YVONNE ABRAMS, MPA, JD

## KAREN DENARD GOLDMAN MENTOR AWARD

This award recognizes an individual in an academic or practice setting who has made a significant contribution to the preparation and/or performance of health educators and has successfully forged the link between research and practice.

JAGDISH KHUBCHANDANI, MD, PHD, MPH, BALL STATE UNIVERSITY

## CLARENCE E. PEARSON PROGRAM EXCELLENCE AWARD

Award recognizes outstanding contributions by a program to the practice of health education demonstrating systematic application of: health education principles; the target population in planning and implementation; and a well-defined evaluation component.

RANELLE BREW, EDD, CHES, SHAPE CAMP: A COMMUNITY AND UNIVERSITY COLLABORATION IN DEVELOPING A PIPELINE INTO HEALTH CAREERS, GRAND RAPIDS, MICHIGAN

## GRADUATE STUDENT RESEARCH PAPER

This award recognizes an outstanding graduate student for creative and innovative research, illustrated by completion of a research paper. The awardee is encouraged to submit the paper for review to one of SOPHE's journals: *Health Education & Behavior*, *Health Promotion Practice*, or *Pedagogy in Health Promotion*.

EVI ADDOH, MS, UNIVERSITY OF ARKANSAS

## HORIZON AWARD

This award recognizes early career health educators who have distinguished themselves as promising health educators through leadership, creativity, involvement in the profession, and health education practice in their settings.

KATIE FRENCH, MPH, CPH, UNIVERSITY OF SOUTH FLORIDA

## SOPHE CHAPTER AWARD FOR EXCELLENCE

This award recognizes a SOPHE Chapter who has demonstrated creative, effective, and replicable methods in the delivery of one or more core member services.

IOWA SOPHE

## SOPHE HOUSE OF DELEGATES CHAPTER STUDENT RECOGNITION AWARD

This award recognizes a SOPHE Chapter Student Member for exemplary student achievements in the field of public health and health education.

CELINE LABELLE, NJ SOPHE CHAPTER

## SOPHE PRESIDENTIAL CITATIONS

The following individuals have provided dedicated service to SOPHE and are awarded a Presidential Citation for their contributions to SOPHE excellence.

### Journals

KATHLEEN ROE, DRPH, MPH AND 2019 HPP EDITORIAL BOARD; JESUS RAMIREZ-VALLÉS, PHD AND 2019 HE&B EDITORIAL BOARD; STEPHEN GAMBESCIA, PHD, MED, MBA, MHUM, MCHES® AND 2019 PHP EDITORIAL BOARD

### HESPA II

RANDALL COTTRELL, DED, MCHES®, ADAM KNOWLDEN, PHD, MS, MBA, CHES®, KATHLEEN ALLISON, PHD, MPH, MCHES®, JAMES MCKENZIE, PHD, MPH, MCHES®, LINDA LYSOBY, MS, MCHES®, CAE, ELAINE AULD, MPH, MCHES® AND CYNTHIA KUSORGBOR-NARH, MPH, MCHES®

## SOPHE TROPHY AWARD

This award acknowledges the tireless contributions to SOPHE, often referred to as the "Unsung SOPHE Hero" award.

To be Announced at SOPHE 2020!

## TECHNOLOGY AWARD

This award recognizes individuals or groups who have distinguished themselves by applying innovative, non-commercial technology in health education that can be broadly disseminated and has the potential to make a significant impact in health education practice.

JANICE L. KRIEGER, PHD, ALEX (AGENT LEVERAGING EMPATHY FOR EXAMS), EAST CAROLINA UNIVERSITY, GREENVILLE, NORTH CAROLINA

## THE VIVIAN DRENCKHAHN STUDENT SCHOLARSHIP AWARD

This student scholarship provides support to both undergraduate and graduate level full-time students in their pursuit of educational and professional development in health education.

TYLER JAMES, MS, CHES®, UNIVERSITY OF FLORIDA

STEPHANIE MACHADO, MPH, UNIVERSITY OF CALIFORNIA BERKELEY

## SOPHE/CDC STUDENT FELLOWS IN INJURY PREVENTION

This one-year fellowship recognizes, assists and trains graduate students working on unintentional injury prevention projects from the perspective of health education or behavioral sciences.

SARAH FEBRES-CORDERO, BSN, RN, EMORY UNIVERSITY

BRIAN PUGLIESE, MA, UNIVERSITY OF IDAHO

## SOPHE PATIENT ENGAGEMENT FELLOW

This fellowship in patient engagement is in honor of Dr. Jessie Gruman and is funded by the Center for Advancing Health. The fellowship recognizes, assists and trains masters or doctoral students to advance the research and practice of patient-centered health care from the perspective of health education or the behavioral sciences.

JESSICA WOODARD, EMORY UNIVERSITY

## R. BRICK LANCASTER COMMUNITY HEALTH INTERNSHIP AWARD

Award supports a students' health education and health promotion project that addresses a significant public or school health issue identified by a public health department or community agency.

CAITLIN HOLDEN, MS, CHES®, TEXAS A&M UNIVERSITY



## 21ST CENTURY STUDENT SCHOLARS

JUAN AGUILERA, MD, MPH, THE UNIVERSITY OF TEXAS AT EL PASO  
NICOLE BATISTA, SOUTHERN CONNECTICUT STATE UNIVERSITY  
BREE BODE, MPH, CHES®, WAYNE STATE UNIVERSITY  
GABRIELA CARDOSO DE PAULA ROCHA, SAN JOSE STATE UNIVERSITY  
D. ROSE EWALD, UNIVERSITY OF NORTH CAROLINA AT GREENSBORO  
JESSICA GRABER, WESTERN MICHIGAN UNIVERSITY  
JONATHAN ISBILL, MS, RD, BALL STATE UNIVERSITY  
DENNIS NYACHOTI, THE UNIVERSITY OF TEXAS AT EL PASO

## 21ST CENTURY PRACTITIONER SCHOLARS

MICHELLE CARVALHO, MPH, MCHES®, EMORY UNIVERSITY – REGION IV  
PUBLIC HEALTH TRAINING CENTER  
TIFFANY NEAL, MPH, MCHES®, HEALTH EDUCATOR, NJSOPHE  
KATRINA WHITE, CHES®, ROCKINGHAM COUNTY DEPARTMENT OF HEALTH  
AND HUMAN SERVICES

## HELEN P. CLEARY SCHOLARSHIP (2019)

*This scholarship provides financial support to students enrolled in a health education related degree program to enable them to take the national Certified Health Education Specialist (CHES®) examination. Scholarship is administered by SOPHE under NCHCEC.*

KATHERINE DREWISKE, KIMBERLY PIERRE, SAMANTHA POSADA, D. ROSE  
EWALD, GABRIELLE DIAZ, VICTORIA DONNELLY

## Papers of the Year

### LAWRENCE W. GREEN PAPER OF THE YEAR AWARD

*This award recognizes authors whose peer-reviewed article has been published in SOPHE's Health Education & Behavior journal in the last year and has made significant contributions to understanding health education, health status, and strategies to improve social and behavioral health.*

*"Exploring the Potential of Participatory Theatre to Reduce Stigma and Promote Health Equity for Lesbian, Gay, Bisexual, and Transgender (LGBT) People in Swaziland and Lesotho" Vol 46, Issue 1, 2019*

CARMEN H. LOGIE, PHD, LISA V. DIAS, MA, JESSE JENKINSON, MSC,  
PETER A. NEWMAN, PHD, RACHEL K. MACKENZIE, MSC, MPH, TAMPOSE  
MOTHOPENG, VELI MADAU, BA, AMELIA RANOTSI, PHD, WINNIE  
NHLENGETHWA, PHD, & STEFAN D. BARAL, MD, MPH

### PEDAGOGY IN HEALTH PROMOTION PAPER OF THE YEAR AWARD

*The Pedagogy in Health Promotion Paper of the Year is selected by our PHP Editorial Board to represent an article from any category in the journal for its high quality and one that well-represents the mission and purpose of the journal.*

*"Development of a Community-Engaged Classroom for Teaching Health Communications: Lessons Learned From Nine Semesters of Implementation" Vol 5, Issue 4, 2019*

ELIZABETH M. FELTER, DRPH, MCHES & SARA BAUMANN, MPH

## SARAH MAZELIS PAPER OF THE YEAR AWARD

*This award recognizes authors whose peer-reviewed article has been published in SOPHE's Health Promotion Practice journal in the last year and has made significant contributions to advancing the practice of health education and health promotion programs, policy, or professional preparation.*

*"The CHAMPIONS NETWork: Training Chicago High School Students as Health Advocates to Improve Health Equity" Vol 20, Issue 1, 2019*

SARA HEINERT, MPH, MARINA DEL RIOS, MD, MSC, ARJUN ARYA, MSC,  
RAMIN AMIRSOLTANI, MPH, NASSEEF QUASIM, BS, LISA GEHM, MD, NATALIA  
SUAREZ, MA, & TERRY VANDEN HOEK, MD

## ELIZABETH FRIES HEALTH EDUCATION AWARD

*This honor awards outstanding career leadership in health education, health promotion or behavioral science. It is awarded through a select committee of the Fries Foundation.*

ROBERT M. KAPLAN, PHD  
DISTINGUISHED PROFESSOR OF HEALTH SERVICES AND MEDICINE  
UCLA SCHOOLS OF PUBLIC HEALTH AND MEDICINE



## Awards Presented by the Foundation for the Advancement of Health Education

### ANN E. NOLTE WRITING AWARD

*This award recognizes a scholarly contribution to the peer-reviewed literature.*

*"Collective Well-Being to Improve Population Health Outcomes: An Actionable Conceptual Model and Review of the Literature"*

BRITA ROY, MD, MPH, MHS; CARLEY RILEY, MD, MPP, MHS; LINDSAY SEARS,  
PHD, SARAH CANNON; ELIZABETH Y. RULA, PHD, & TIVITY HEALTH, INC.

*Published in the American Journal of Health Promotion*

### DR. DELBERT OBERTEUFFER SCHOLARSHIP

*This award recognizes doctoral students for their academic achievement; potential for advancing the health of children and youth; and professional goals.*

MILKIE VU, EMORY UNIVERSITY

### DR. BECKY J. SMITH SCHOLARSHIP

*This award recognizes an undergraduate student majoring in Health Education with an emphasis in Community, School, or Public Health Education.*

DESTINY HAYES, UNIVERSITY OF NORTH CAROLINA, GREENSBORO

### MARY K. BEYRER GRADUATE STUDENT SCHOLARSHIP

*This award recognizes a promising graduate student in health education.*

SHEMEKA THORPE, UNIVERSITY OF NORTH CAROLINA, GREENSBORO

**APPLY FOR NEXT YEAR'S FAHE SCHOLARSHIPS, FELLOWSHIPS,  
AND AWARDS AT [WWW.FAHEINFO.ORG](http://WWW.FAHEINFO.ORG).**



The Department of Health Promotion & Behavioral Sciences and  
The Center for Health Promotion & Prevention Research  
proudly congratulates

**Patricia Dolan Mullen, DrPH, MLS**

Distinguished Teaching Professor of the University of Texas System  
2019 Minnie Stevens Piper Professor  
UTHealth President's Scholar  
Professor, Department of Health Promotion & Behavioral Sciences

for receiving SOPHE's  
*2020 Distinguished Fellow Award*



 **UTHealth**<sup>®</sup>

**The University of Texas**  
**Health Science Center at Houston**

**School of Public Health**  
**San Antonio**

*Congratulations Pat!*

*Thank you for your leadership, vision and ongoing contributions to the field.*

*Best,*

*SARC faculty, staff and students*

# Happy 20th Anniversary to Health Promotion Practice



Randy Schwartz, MSPH  
*Founding Editor-in-Chief,*  
2000-2009



Leonard Jack, Jr, PhD, MSc  
*Editor-in-Chief,*  
2010-2013



Jesus Ramirez-Valles, PhD  
*Editor-in-Chief,*  
2013-2017



Kathleen Roe, DrPH, MPH  
*Editor-in-Chief,*  
2017-2022

Thank you to SAGE Publications, our publishing partner, in founding and supporting this journal and SOPHE.



# DETAILED SCHEDULE

Δ = ADVANCED LEVEL CE ✓ ENTRY-LEVEL CE



Download the mobile app to gain access to select presentations, abstracts and speaker information, polling and more!

## TUESDAY, MARCH 17

**8:30 AM - 5:00 PM**

### SOPHE BOARD OF TRUSTEES MEETING

Lunch sponsored by the HealthCare Georgia Foundation.

Room: Atlanta Ballroom 3, 4, & 5, Level 1

**8:00 AM - 5:00 PM**

### ESG BOARD MEETING

Room: Atlanta Ballroom 1, Level 1

**9:00 AM - 5:00 PM**

### EXHIBITOR SET-UP

Room: Georgia Hall, Level 1

**9:00 AM - 5:00 PM**

### CASE STUDY COMPETITION: GRADUATE AND UNDERGRADUATE

Sponsored by the Foundation for the Advancement of Health Education (FAHE) and ETR.

Judges: Joi Alexander, MS, Lori Dewald, PhD, MCHES<sup>®</sup>, Yuba R. Gautam, PhD, MCHES<sup>®</sup>, Dianne L. Kerr, PhD, MCHES<sup>®</sup>, Karl L. Larson, PhD, MCHES<sup>®</sup>, Ying Li, PhD, CHES<sup>®</sup>, Beth Liechty, CHES<sup>®</sup>, Frederick W. Schulze, PhD, MCHES<sup>®</sup> and Victoria R. Wagner-Green, MPH, CHES<sup>®</sup>

Room: Conference Rooms 121, 123, and 125, Level 1

**10:00 AM - 7:30 PM**

### REGISTRATION OPEN

Room: Georgia Registration, Level 1

**11:00 AM - 5:00 PM**

### PRE-CONFERENCE WORKSHOP: THE ROLE OF PUBLIC HEALTH LEADERS IN MANAGING CHANGE

Δ 5.5 ADVANCED

Room: Augusta, Level 2

Moderators: Michelle Carvalho, PhD, MCHES<sup>®</sup>, Deanna Zhong, MPH, CHES<sup>®</sup>

Presenter: Linda Hoopes, PhD

**12:00 PM - 4:00 PM**

### PRE-CONFERENCE WORKSHOP: A POVERTY SIMULATION: ENGAGING IN PRACTICES THAT ADVANCE SOCIAL AND ECONOMIC JUSTICE

✓ 3.0 ENTRY

Room: Athens, Level 2

Presenters: Brittany Prince Evans, MHA

**1:00 PM - 4:00 PM**

### PRE-CONFERENCE WORKSHOP: MAPPING ACADEMIC CURRICULUM TO THE UPDATED PRACTICE ANALYSIS RESULTS

✓ 3.0 ENTRY

Room: Valdosta, Level 2

Presenters: Carolyn Rodgers, PhD, MHS, MPH, MCHES<sup>®</sup>, Kadi Bliss, PhD, CHES<sup>®</sup>, Kerry Redican, PhD, CHES<sup>®</sup>

**5:30 PM - 6:30 PM**

### SOPHE HOUSE OF DELEGATES MEETING

Room: Atlanta Ballroom 3, 4, & 5, Level 1

**5:30 PM - 7:00 PM**

### HPP 20TH ANNIVERSARY RECEPTION

Invitation only.

Room: Savannah, Level 2

**7:30 PM - 9:00 PM**

### UNITING OUR VOICES FOR CHANGE - ATLANTA GAY MEN'S CHORUS

Tickets available for purchase at registration.

Room: Mainstage: Grand Ballroom, Level 3

## WEDNESDAY, MARCH 18

**7:00 AM - 6:00 PM**

### REGISTRATION AND SOPHE STORE OPEN

Room: Georgia Registration, Level 1

**7:15 AM - 8:15 AM**

### NEW MEMBERS & FIRST TIME ATTENDEES BREAKFAST

Room: Atlanta Ballroom 3, 4 & 5, Level 1

**7:45 AM - 8:45 AM**

### NCHEC BREAKFAST

Room: Capitol North, Level 1

Pre-registration required

**8:00 AM - 8:30 AM**

### WEDNESDAY POSTER SET-UP

Room: Georgia Hall Pre-function, Level 1

**9:00 AM - 11:00 AM**

### OPENING PLENARY

Δ 1.5 ADVANCED

Room: Mainstage: Grand Ballroom, Level 3

Moderator: Elizabeth Stevenson, MPH

**9:00 AM - 9:15 AM**

SOPHE Welcome

Elaine Auld, MPH, MCHES<sup>®</sup> and

Elizabeth Stevenson, MPH



sophehealth



sophehealtheducation



sophegram



@SOPHEtweets #SOPHE2020





Download the mobile app to gain access to select presentations, abstracts and speaker information, polling and more!

- 9:15 AM – 9:30 AM Greetings from CDC National Center for Chronic Disease Prevention and Health Promotion  
*Karen Hacker, MD, MPH*
- 9:30 AM – 10:00 AM Presidential Address  
Advancing Health Equity: Taking an Anti-racism Approach to Health Promotion Leadership and Action  
*Jean Breny, PhD, MPH*
- 10:00 AM – 11:00 AM Health Education and Social Justice  
*David Satcher, MD, PhD*

**11:00 AM – 11:15 AM  
BREAK**

**11:00 AM – 7:30 PM  
EXHIBITS OPEN AND POSTER PRESENTATIONS**

**11:15 AM - 12:45 PM  
CONCURRENT SESSIONS A**

**A1: STUDENT WORKSHOP  
WHO'S WHO IN HEALTH EDUCATION: LEARNING HOW TO MAKE THE BEST OUT OF YOUR NETWORK**

✓ 1.5 ENTRY  
Room: Atlanta Ballroom 3, 4 & 5, Level 1  
Sponsored by Fairleigh Dickinson University  
Moderator: Skye McDonald, MS, CHES®  
11:15 AM *Brittany Rosen, PhD, MEd, CHES®*  
11:36 AM *Gabrielle Benenson, MPH*  
12:01 PM *Lisa Carlson, MPH, MCHES®*

**A2: ORAL SESSION  
DEMISTIFYING PUBLISHING IN SOPHE PEER REVIEWED JOURNALS**

Δ 1.5 ADVANCED  
Room: Athens, Level 2  
Moderator: Jeanine Robitaille, MS, CHES®  
11:15 AM Demystifying Publishing in SOPHE Peer Reviewed Journals  
*SOPHE's Peer Reviewed Journal Panel*  
*Kathleen Roe, DrPH, MPH, Jody Early, PhD, MCHES®, Danielle Brittain, PhD, Melissa Valerio, PhD, Cheryl Merzel, PhD, and Jesus Ramirez-Valles, PhD, MPH*

**A3: ORAL SESSION  
OVERVIEW AND EMERGING ISSUES FOR IMPLEMENTATION SCIENCE: CIRCLE OF RESEARCH AND PRACTICE**

Δ 1.5 ADVANCED  
Room: Capitol Center, Level 1  
Moderator: Bonni C. Hodges, PhD

- 11:15 AM Implementation Science Overview - Demystifying Implementation Science, Theories and Methods  
*Cam Escoffery, PhD, MPH, CHES®*
- 11:40 AM Leveraging Implementation Science for Public Health Impact: Tools and Resources  
*Margaret M. Farrell, MPH, RD*
- 12:00 PM Implementation Science at CDC's National Center for Injury Prevention and Control: Past, Present, and Future  
*Theresa Leola Armstead, PhD*
- 12:15 PM Implementation Science in the Practice of Health Promotion – Advancing Practitioner Engagement  
*Natalie Wilkins, PhD and Randy Schwartz, MSPH*

**Δ A4: IGNITE90  
IGNITING CHANGE IN HEALTH EDUCATION OR HEALTH EDUCATION AS A CATALYST FOR CHANGING OUTCOMES**

Δ 1.5 ADVANCED  
Room: Grand Ballroom, Level 3  
Moderator: Kelly Bishop, MA, MCHES®, FASHA

- 11:15 AM Piloting an Artificially Intelligent Virtual Assistant in Online Health Promotion College Courses  
*Eric Conrad, PhD and Austin White*
- 11:20 AM An Innovative Method, Adapting Evidence-based Education and Contact Strategies for Large-scale Mental Health Stigma Reduction  
*Sarah D Rosenberg, MPH*
- 11:25 AM Inside the Military and Athlete Brain: Implementing Concussion Education to Improve Concussion Identification and Disclosure  
*Julianne Denice Schmidt, PhD, ATC and Christopher D'Lauro*
- 11:30 AM Type 2 Diabetes Prevention and Screening Improvement in Primary Care  
*Allison Lorenz, MPA and Sara May, BS*
- 11:35 AM Health Disparities and Racial Inequities: What Health Educators and Providers Need to Know to Promote Cultural Competency  
*Brittany Comunale, MPH, MBA, CCRC*
- 11:40 AM Supporting Health and Wellness at Pantries: Development of Nutritious Recipes using Food Bank Inventories  
*Serina Gaston, MEd, CHES®*
- 11:45 AM Examining Healthcare Professionals' Perceptions of Media Use in Children  
*Sabrina Mangapora, OMS II, CHES® and Jean Marie Place, PhD*
- 11:50 AM Addressing the "what about...": Applying Audience Research to Craft Impactful Substance-Free Messaging for At-Risk Teens  
*Hadley Scharer, BA*
- 11:55 am "You just get hammered, and that's when all the crazy Snaps start happening": Creating Relevant Harm Reduction Messages for Young Adults Who Binge Drink  
*Katie McCabe, MPH and Sara Smith, MA, CHES®*



Download the mobile app to gain access to select presentations, abstracts and speaker information, polling and more!

**12:00 PM** California SNAP-Ed: Understanding the Personal Values and Nutritional Patterns of the Adult 'Sacrificer'

*Priscilla Fernandez, PhD*

**12:05 PM** Untenured Faculty and Stress

*Lydia Burak, PhD*

**12:10 PM** Thinking Outside the Box: Using Innovative Partnerships to Decrease Opioid and Alcohol Use in Young Adults across North Carolina

*Sara J Smith, MA, CHES®*

**12:15 PM** Did the US Court-Mandated "Corrective Statements" Advertisements Deliver the Right Message?

*Shaikha Khalid, DMDc*

**Leveraging the Power of Partnerships: A Community, Legislative, and Academic Collaboration to Improve Food Access in Passaic, New Jersey**  
*Lisa Lieberman, PhD, CHES®*

**Assessing the Benefits and Feasibility of a Mobile Food Pantry Serving Culturally and Linguistically Diverse Neighborhoods**  
*Tracey Thomas, DrPH, CHES®*

**Working with Partners to Communicate Program Success**  
*Holly Wilson, MHSE, MCHES®*

**Leveraging Partnerships to Strengthen Community Engagement in Houston's Lead-burdened Neighborhoods**  
*Komal Sheth, MPH*

## **A5: ORAL SESSION**

### **DELIVERING HEALTH EDUCATION IN CULTURALLY DIVERSE POPULATIONS**

Δ 1.5 ADVANCED

Room: Capitol South, Level 1

Moderator: Matt Weinburke, DrPH, MPH, REHS, MCHES®, MLT (ASCP) CM

**11:20 AM** Health Screenings and Preventives Behaviors Among Latino Men: A Qualitative Assessment

*Raffy Luquis, PhD, MCHES®*

**11:40 AM** Applying A Stage-Based Model to Address the Latent Tuberculosis Infection Conundrum—"I don't feel sick, so why should I get tested?"

*John Parmer, PhD and Alejandra Brackett, MPH*

**12:00 PM** Health Concerns and Risk Behavior Among Deaf People in Florida: A Call for Action

*Tyler G. James, MS, CHES®*

## **A6: ROUNDTABLE**

### **ENGAGING COMMUNITIES THROUGH COLLABORATIVE PARTNERSHIPS**

✓ 1.5 ENTRY

Room: Capitol North, Level 1

Moderator: Rhonda Rahn, PhD, CHES®

Roundtable presentations will begin at 11:15 am and will switch every 10 minutes.

**Learn to See the Problem You Don't See: Discover the Untapped Value in Your Collaborations and Partnerships**

*Bridget Behrmann, MS and Caitlin J. Gagnon, BA*

**Meeting the Community Where They Are: Bringing Check. Change. Control. to the Y**

*Skye McDonald, MS, CHES®, Amanda Changet, MS and Brittany Rosen, PhD, MEd, CHES®, FASHA*

**Lessons Learned from a Community-Academic Partnership to Promote Children's Health and Well-Being at the Community Level in New York State**

*Christine Bozlak, PhD, MPH and Paige Hughes, BA*

## **12:45 PM - 2:00 PM**

### **LUNCH**

Concessions are available for purchase in Piedmont.

## **12:45 PM - 2:00 PM**

### **WALKING TOUR**

Please join us during lunch at the registration area for a walking tour of downtown Atlanta. Tour departs at 12:50 pm. Our Social Events committee member, Matt Weinburke and others will accompany you on the tour. Download the mobile app for more information, including a map of Atlanta.

## **2:00 PM - 3:00 PM**

### **CONCURRENT SESSIONS B**

## **B1: ORAL SESSION**

### **INTEGRATING SOCIAL EMOTIONAL LEARNING AND SCHOOL HEALTH EDUCATION: HOW CAN WE STOP 'COMPETING' AND START COLLABORATING?**

Δ 1.0 ADVANCED

Room: Capitol South, Level 1

Moderator: Joanne Chopak-Foss, PhD, FASHA

**2:05 PM** Social and Emotional Learning (SEL) Resources for School Health: Results from an Environmental Resource Scan

*Adina C. Cooper, PhD, MEd, Leigh Szucs, PhD, CHES® and Sarah Lee, PhD*

**2:25 PM** Joining Forces: Connecting Health Education and Social-Emotional Learning

*Eko Canillas-Myles, MAEd, EdD, Lisa Walker, MEd and Angela Glymph, MS, PhD*



sophehealth



sophehealtheducation



sophegram



@SOPHEtweets #SOPHE2020



Download the mobile app to gain access to select presentations, abstracts and speaker information, polling and more!

**B2: ORAL SESSION**

**LEVERAGING VARIOUS SECTORS AND PARTNERSHIPS TO VALIDATE HEALTH EDUCATION PRACTICE: RESULTS OF HESPA II**

Δ 1.0 ADVANCED

Room: Mainstage: Grand Ballroom, Level 3

Moderator: Randy Schwartz, MSPH

2:00 PM Leveraging Various Sectors and Partnership to Validate Health Education Practice: Results of HESPA II

Randy Cottrell, PhD, MCHES®, Kathleen Allison, PhD, MCHES® and Kadi Bliss, PhD, MCHES®

**B3: ORAL SESSION**

**CROSS-SECTOR OUTREACH AND COLLABORATION: LESSONS AND STRATEGIES FROM THE FIELD**

Δ 1.0 ADVANCED

Room: Athens, Level 2

Moderator: Katie Wagoner, MPH, MCHES®

2:05 PM PHRASES: Public Health Reaching Across Sectors – Tools for Collaboration and Examples from Student Field Placements

Michelle Carvalho, MPH, MCHES®

2:35 PM Cross-Sector Engagement for Health and Climate Adaptation

Meg Sansivero, MPH and Paul Schramm, MPH, MS

**B4: ORAL SESSION**

**ARTS & PUBLIC HEALTH IN AMERICA: CREATING HEALTHY COMMUNITIES**

✓ 1.0 ENTRY

Room: Atlanta Ballroom 3, 4 & 5, Level 1

Moderator: Kathleen Roe, DrPH, MPH

2:05 PM Food Dignity: Collaboration as a Catalyst to Improve Food Access & Public Education

Jill Sonke, PhD, MA

**B5: ROUNDTABLE**

**ADDRESSING TRAUMA AND VIOLENCE IN SCHOOLS AND COMMUNITIES**

Δ 1.0 ADVANCED

Room: Capitol North, Level 1

Moderator: Sely-Ann Ayiesha Headley, PhD, MPH

Roundtable presentations will begin at 2:00 pm and will switch every 15 minutes.

Moving a City-wide Health Department toward a Trauma-Informed Approach to Service Delivery: The Importance of Assessing Organizational Readiness

Holly Raffle, PhD, MCHES® and Jennifer Morel, MPH, CHES®

Constructing Evidence Based Teaching in Higher Education and Professional Development on Adverse Childhood Experiences (ACEs) and Trauma Informed Practices (TIPs): Influences from the Literature and Experience

Tammy Wynard, MS

Creating Healthy Communities: Arts + Public Health in America

Kelly Cornett, MS and Shanae Burch, EdM

A County Health Department Prevents Youth Violence through Partnerships that Address Social Justice

Linda McGlone, MPH

**3:00 PM – 4:00 PM**

**PROFESSIONAL PREPARATION COMMITTEE MEETING**

Room: Georgia 13, Level 1

**3:00 PM - 3:15 PM**

**BREAK**

Refreshments provided in the Exhibit Hall.

Sponsored by Wiley Publishing

**3:15 PM - 4:45 PM**

**PLENARY**

**PL2: ADVANCING SOCIAL JUSTICE: MOBILIZING THE POWER OF ARTS AND CULTURE IN PUBLIC HEALTH**

Δ 1.5 ADVANCED

Room: Mainstage: Grand Ballroom, Level 3

Moderator: Collins O. Airhihenbuwa, PhD, MPH

Presenters: Ken Rose, MPA, Jill Sonke, PhD, MA, and Stacey Springs, PhD

Announcement of Student Case Study Competition Winners

Karl Larson, PhD, MCHES® and Donna Videto, FAHE Vice President

**5:00 PM - 6:00 PM**

**SOPHE ALL-MEMBER BUSINESS MEETING**

Room: Mainstage: Grand Ballroom, Level 3

Light refreshments will be served.

**5:00 PM - 6:00 PM**

**POSTER PROMENADE**

✓ 1.0 ENTRY

Room: Georgia Hall Pre-function, Level 1

We1: Theory of Planned Behavior Path Model Predicting Latinx/Hispanic College Student Condom Use

Eric Conrad, PhD, CHES®

We2: Self-Reported Mentorship Needs and Preferences of Health Education and Promotion Students

Ashley Parks, DrPH, MA, MPH, MCHES®, CPH

We3: A Program Evaluation of a Pilot Service-Learning Intervention: Improving Fruit/Vegetable Intake Among Older Adults

Audra Gollenberg, PhD

We4: Our Role in Promoting Health Education Specialists

Nicolette Powe, DrPH, MS, MCHES®

We5: Cancer Risk Perception Predictors for Total Body Skin Examinations: A Cross Sectional Study Using HINTS 2017 Data

Meghann Wheeler, PhD

# DETAILED SCHEDULE (CONT.)

Δ = ADVANCED LEVEL CE ✓ ENTRY-LEVEL CE



Download the mobile app to gain access to select presentations, abstracts and speaker information, polling and more!

## 5:00 PM - 6:00 PM

### POSTER PRESENTATIONS

Room: Georgia Hall Pre-function, Level 1

## 6:00 PM - 7:30 PM

### OPENING RECEPTION

Room: Georgia Hall, Level 1

Join your colleagues and meet new people for an evening of food, drinks (cash bar), networking, and fun! And, learn the latest resources and services from our exhibitors and earn prizes. Stop by the SOPHE Community of Practice tables to learn more about their activities.

## 7:00 PM - 7:30 PM

### POSTER PRESENTERS TEAR DOWN POSTERS

Room: Georgia Hall Pre-function, Level 1

## 7:00 PM - 8:30 PM

### STUDENT SOCIAL

Room: Atlanta Ballroom 3, 4 & 5

Supported by Walden University

## THURSDAY, MARCH 19

## 7:00 AM - 6:00 PM

### REGISTRATION OPEN AND SOPHE STORE

Room: Georgia Registration, Level 1

## 7:30 AM - 8:30 AM

### CONCURRENT SESSIONS C

#### C1: ORAL SESSION

##### CDC AND SCHOOL HEALTH RESOURCES

Δ 1.0 ADVANCED

Room: Capitol South, Level 1

Moderator: Danielle Brittain, PhD

7:35 AM **What Everyone Ought to Know About CDC's School Health Index**  
*Bridget Borgogna, MEd and Chris Kissler, MPH*

7:55 AM **Tell Me More: What Is the CDC's Health Education Curriculum Analysis Tool (HECAT)**  
*Leigh Szucs, PhD, CHES®*

#### C2: ORAL SESSION

##### PRACTICAL APPLICATIONS AND BEST PRACTICES FOR HEALTH PROMOTION MATERIALS

✓ 1.0 ENTRY

Room: Capitol Center, Level 1

Moderator: Deitra Wengert, PhD, MCHES®

7:30 AM **You Have a Toolkit—Now What? Practical Applications for Creating, Editing and Disseminating Program Collateral Materials**

*Jody Ruth Steinhardt, MPH, CHES® and Cherylee Sherry, MPH, MCHES®*

#### C3: ORAL SESSION AND YOGA

##### SELF-CARE FOR HEALTH EDUCATORS WITH YOGA

✓ 1.0 ENTRY

Room: Atlanta Ballroom 1, Level 1

Moderator: Inuka Midha, PhD, MPH, MCHES®

7:35 AM **Self-care for the Health Education Professionals**  
*David Brown, EdD, MLIS, MCHES®*

7:50 AM **40-minute Yoga Class**  
*Melanie Bell, AAI, CCEP, 200HREYT*

#### C4: ORAL SESSION

##### RESULTS AND LESSONS LEARNED FROM A DIGITAL TECHNOLOGY INITIATIVE FOCUSING ON YOUNG PEOPLE LIVING WITH HIV

✓ 1.0 ENTRY

Room: Augusta, Level 2

Moderator: Tamara Mason, MPH, CHES

7:35 AM **Results and Lessons Learned from a Digital Technology Initiative Focusing on Young People Living with HIV**  
*John Hannay, MTS, MCHES® and Ronald A. Brooks, PhD*

#### C5: ORAL SESSION

##### SOPHE'S ROLE AS A SPA IN ENTRY-LEVEL SCHOOL HEALTH EDUCATION TEACHER PREPARATION

✓ 1.0 ENTRY

Room: Capitol North, Level 1

Moderator: Gayle Walter, PhD, MPH, CHES®

7:35 AM **SOPHE's Role as a SPA in Entry-Level School Health Education Teacher Preparation**  
*Susan F. Goekler, PhD, MCHES®, Deborah Fortune, PhD, FAAHE, and Elaine Auld, MPH, MCHES®*

## 8:00 AM - 8:30 AM

### THURSDAY POSTER SET-UP

Room: Georgia Pre-function, Level 1

## 8:30 AM - 5:00 PM

### EXHIBIT HALL AND POSTER PRESENTATIONS



sophehealth



sophehealtheducation



sophegram



@SOPHEtweets #SOPHE2020





Download the mobile app to gain access to select presentations, abstracts and speaker information, polling and more!

**8:30 AM - 8:45 AM  
BREAK**

**8:45 AM - 10:15 AM  
PUBLICATIONS COMMITTEE MEETING**  
Room: Atlanta 2, Level 1

**8:45 AM - 10:15 AM  
CONTINUING EDUCATION COMMITTEE MEETING**  
Room: Georgia 13, Level 1

**8:45 AM - 10:15 AM  
CONCURRENT SESSIONS D**

**D1: ESG ORAL SESSION  
ENGAGING IN HEALTH EDUCATION PRACTICE**

✓ 1.5 ENTRY

Room: Atlanta Ballroom 3, 4 & 5, Level 1  
Moderator: Skye McDonald, MS, CHES®

- 8:50 AM Advocating for Survivors & Increasing Awareness: #Be SoMEone Too**  
*Caitlin Holden, MS, CHES®, Meagan Shipley, PhD, CHES® and Cori S. Strahan, BS, CHE®*
- 9:30 AM Menstrual Health at a Midwest School: How is The Diva Cup Impacting Menstruation within College Students?**  
*Lillian Minor, BS, Samantha A. Zahurones, CAN, BLS/CPR and Kiley R. Klauer, BSc*
- 9:50 AM Engaging Online Students in Health Education Practice**  
*Holly T. Moses, PhD, MCHES® and Erik Johansen, BS*

**D2: ORAL SESSION  
BUILDING A MOVEMENT TO CHANGE THE NARRATIVE OF THE HEALTH OF AFRICAN AMERICAN WOMEN AND INFANTS**

Δ 1.5 ADVANCED

Room: Capitol Center, Level 1  
Moderator: La Verne D. Partlow, MEd

- 8:50 AM Black Women as Change Agents: Insights for Research and Practice from the African American Community**  
*LaNita Wright, PhD, MPH, CHES®*
- 9:15 AM Process of Developing a Relationship Imperative Scale for Assessing Risk for HIV Infection among African American College Women: Catalyst for Change**  
*Deborah A Fortune, PhD*
- 9:35 AM Birth Justice Warriors: A Holistic Approach to Addressing Black Maternal and Infant Health in the Suburbs**  
*Martine Hackett, PhD, CHES®, Tari Ajeh, MPH and Britney Nathan, MDc*
- 9:55 AM Addressing Maternal Mortality among African American Women through Media-based Storytelling**  
*Nakeita Burse, DrPH, CHES®*

**D3: ORAL SESSION  
CULTIVATING RESILIENT STUDENTS THROUGH CREATIVE TEACHING METHODS**

✓ 1.5 ENTRY

Room: Capitol South, Level 1  
Moderator: Regan Johnson, MEd, MCHES®

- 8:50 AM Art as a Teaching Tool for Professional Preparation in the University Classroom**  
*J. Hope Corbin, MPhil, PhD*
- 9:10 AM Real Classrooms, Real Teaching Skills: Using Model Lessons as a Way to Improve Classroom Pedagogy**  
*Cathy Durand-Horne, BA, Beth Stevenson, MPH and Christi Kay, MEd*
- 9:45 AM BRAVING Challenges: Cultivating Resilient Students and Classrooms**  
*Caitlin Holden, MS, MCHES®, Meagan Shipley, PhD, CHES® and Elisa Beth McNeill, PhD, CHES®*

**D4: ORAL SESSION  
TIPS AND TOOLS FOR ADVOCATING FOR IMPROVED HEALTH FOR ALL**

Δ 1.5 ADVANCED

Room: Mainstage: Grand Ballroom, Level 3  
Moderator: Kay Deaner, MEd, RN, CHES®

- 8:50 AM The Art and Science of Undergraduate Health Advocacy Pedagogy: Assessing the Integration, Instruction, and Application of Advocacy for Social Change within the Health Education Curriculum and Early-Career Practice**  
*Christina Jones, PhD*
- 9:15 AM Empowering Health Activists to Build a Movement Through a Fellowship Program**  
*Amanda Gabarda, EdD, MPH, NBC-HWC and Camille Clark, EdD*
- 9:40 AM Organization and Implementation of an Annual LGBTQ Statewide Lobby Day**  
*Eric Conrad, PhD and Kelly Corrine Hall, MPH, CHES®*

**D5: INNOVATE TABLE  
MEETING THE NEEDS OF NEW, MID-CAREER AND SEASONED HEALTH PROFESSIONALS THROUGH QUALITY TRAINING**

Δ 1.5 ADVANCED

Room: Athens, Level 2  
Moderator: Rebecca Foco, PhD, MCHES®

- This Innovate Table session will have a unique "I" seating style to encourage engagement and innovation.
- Presentations will begin at 8:45 am and will switch every 20 minutes.
- CDC's Quality Training Standards: A Catalyst for Change**  
*Gabrielle Benenson, MPH and Martha Alexander, PhD, MA, MPH, MCHES®*
  - A Regional Training Needs Assessment Process: An Opportunity to Nurture Partnerships While Developing State and Regional Training Plans**  
*Laura Lloyd, MPH, MCHES®*



Download the mobile app to gain access to select presentations, abstracts and speaker information, polling and more!

**From SME to Exceptional Trainer: Working with Experts to Create Engaging and Relevant Trainings**  
Michelle Carvalho, MPH, MCHES® and Melissa (Moose) Alperin, EdD, MPH, MCHES®

**Integration, Innovation, Implementation, and Gamification: A How-To Guide to Developing E-Learning Modules**  
Cynthia Karlsson, MPH, MS, CHES®, Alison Puckett, MPH, CHES® and Colin Mitchell, BF

**D6: ROUNDTABLE  
PRACTICES AND POLICIES TO CONTROL THE USE OF CANNABIS AND TOBACCO**

Δ 1.5 ADVANCED

Room: Capitol North, Level 1

Moderator: Kaitlin Cartoccio, MPH, MCHES®

Roundtable presentations will begin at 8:45 am and will switch every 20 minutes.

**The Legalization of Cannabis Use and Its Impact on Tobacco Control**  
Francesca Lomotan, MPH

**Addressing Teen Tobacco and Vape Use: Learnings from a Tailored Alternative Teen Campaign**  
Hadley Scharer, BA

**Evolution in the Use of Flavored Tobacco Product Among Racial/Ethnic Minority Youths in the US**  
Ransome Eke, MD, PhD

**Strategies to Optimize Equitable Online Health Research Participation Among Patients with Tobacco-Associated Lung Conditions**  
Samantha Paige, PhD, MPH, CHES®

**10:15 AM - 10:30 AM  
BREAK**

**10:30 AM - 11:45 AM**

**PLENARY**

Δ 1.5 ADVANCED

**PL3: JAMES F. AND SARA T. FRIES FOUNDATION AND CDC FOUNDATION AWARD AND LECTURE**

Room: Mainstage: Grand Ballroom, Level 3

Moderator: Cam Escoffery, PhD, MPH, CHES®

**10:30 AM - 10:50 AM Presentation of the 2020 Elizabeth Fries Health Education Award**  
Viktor Bovbjerg, PhD - James F. and Sarah T. Fries Foundation and Lawrence W. Green, DrPH, ScD (Hon), Professor Emeritus, University of California, San Francisco

**10:50 AM - 11:30 AM More Than Medicine: Updating the Narrative for Improving Population Health**  
Robert M. Kaplan, PhD; Distinguished Professor of Health Services and Medicine; UCLA Schools of Public Health and Medicine

**10:30 AM - 1:30 PM**

**ESG BUSINESS MEETING AND NCHCEC AWARD PRESENTATION**

Room: Atlanta Ballroom 3, 4 & 5, Level 1

Followed by t-shirt exchange.

**11:45 AM - 1:30 PM**

**LUNCH**

Concessions are available for purchase in Piedmont.

**11:45 AM - 1:30 PM**

**WALKING TOUR**

Please join us during lunch at the registration area for a walking tour of downtown Atlanta. Tour departs at 11:50 am. Our Social Events committee member, Matt Weinburke and others will accompany you on the tour. Download the mobile app for more information, including a map of Atlanta.

**12:00 PM - 1:00 PM**

**ADVANCING YOUR CAREER THROUGH SOPHE LEADERSHIP**

Δ 1.0 ADVANCED

Room: Augusta, Level 2

Presenters: Antonio Gardner, PhD, MS, CHES®, Shanna Livermore, MPH, MCHES®, Angela Mickalide, PhD, MCHES®, Elaine Auld, MPH, MCHES® and Keon Gilbert, DrPH, MPH, MA

**12:00 PM - 1:00 PM**

**COMMUNITIES OF PRACTICE LUNCH & LEARN ROUNDTABLES**

Room: Courtyard, Pool Area

Dive in and get to know more about the volunteer opportunities within SOPHE! Bring luau-appropriate tchotchkes for giveaways.

**12:00 PM - 1:00 PM**

**POSTER PROMENADE**

✓ 1.0 ENTRY

Room: Georgia Hall Pre-function, Level 1

**Th1: Exploring the Impact of Storytelling on Storytellers in a Hepatitis B Health Communication**

Julia Alber, PhD, MPH

**Th2: Campus Readiness: Preventing and Responding to an Active Threat**

Sely-Ann Headley, PhD, MPH

**Th3: Using Windshield Surveys as an Assessment Tool: Assessing Neighborhood Risks and Protective Factors for Violence**

Erica Payton, PhD, CHES

**Th4: Examining College Students' Use, Perceptions, and Knowledge of Marijuana and Marijuana Laws**

Meghan Burroughs, PhD, MA, CHES

**Th5: The Connection between Religious Involvement & Performance of Health Promoting Behaviors among African American Men: Findings from the Healthy Eating Activity Rest Together (HEART) Matters Study**

Larrell Wilkinson, PhD, MSPH, CHES



Download the mobile app to gain access to select presentations, abstracts and speaker information, polling and more!

**Th36: Exploring Identity Formation and Identity Salience Among Sexuality Educators**

*Awarded Intern, R. Brick Lancaster Community Health Internship  
Caitlin B. Holden, MS, CHES*

**Th37: Falling for Smartphones: A Personalized Message-Based Intervention to Reduce Injury from Smartphone Use While Walking**

*Fellow, SOPHE/CDC Student Fellowship in Injury Prevention  
Brian Pugliese, MA*

**Th38: Harm Reduction in Little Five Points**

*Fellow, SOPHE/CDC Student Fellowship in Injury Prevention  
Sarah Febres-Cordero, BSN, RN*

**Th39: Attitudes, Intent and Social Norms for Exercise and healthy Eating among African Americans with End Stage Renal Disease: A Qualitative Study**

*Fellow, SOPHE Student Fellowship in Patient Engagement  
Jessica Woodard, BA*

**12:00 PM - 1:00 PM**

**POSTER PRESENTATIONS AND LATE BREAKING STUDENT POSTERS**

Room: Georgia Hall Pre-function, Level 1

**1:00 PM - 2:00 PM**

**INTERNATIONAL UNION FOR HEALTH PROMOTION (IUHPE)/ NORTH AMERICA REGIONAL OFFICE MEETING**

Room: Atlanta Ballroom 1, Level 1

**1:30 PM - 2:00 PM**

**ESG T-SHIRT EXCHANGE**

Room: Atlanta Ballroom 3, 4, & 5

**1:30 PM - 2:30 PM**

**FACULTY DEPARTMENT HEAD MEETING**

Room: Georgia 13, Level 1

**1:30 PM - 2:30 PM**

**CONCURRENT SESSIONS E**

**E1: ORAL SESSION**

**A SPOTLIGHT ON CURRENT RURAL HEALTH EDUCATION**

✓ 1.0 ENTRY

Room: Augusta, Level 2

Moderator: TBD

**1:35 PM Trends in the use of Evidence-Based Practices in Rural Health Systems**

*Coleman Tanner, MPH, CHES®*

**2:00 PM Tackling Rural Health Issues: Building a Comprehensive Partnership Network of Healthcare Systems, Community Partners, and Academic Institutions**

*F. Jeannine Everhart, PhD, MPH, MBA, CHES®*

**E2: ORAL SESSION**

**TIPS AND TOOLS WHEN WORKING WITH ELECTED OFFICIALS**

Δ 1.0 ADVANCED

Room: Capitol Center, Level 1

Moderator: Kathleen Middleton, MS, MCHES®

**1:35 PM Perceptions and Practices of Local Health Officers/ Commissioners Regarding Tobacco 21 Policy Advocacy**

*Erica Payton, PhD, MPH*

**2:00 PM Cluster Analysis of County Commissioners' Perceptions of Local Level Firearm Violence Interventions**

*Heidi Hancher-Rauch, PhD, CHES®, Daryn Papenfuse, MPH and Ruben Juarez, BS*

**E3: ORAL SESSION**

**ENVIRONMENTAL HEALTH: CDC**

✓ 1.0 ENTRY

Room: Athens, Level 2

Moderator: TBD

**1:35 PM CDC's Tracking Network: A Data Resource to Inform Action and Improve Public Health**

*Holly Wilson, MHSE, MCHES® and Ann Ussery-Hall, MPH, MCHES®*

**E4: ORAL SESSION**

**WHAT YOUTH NEED AND HOW SCHOOLS CAN HELP**

Δ 1.0 ADVANCED

Room: Capitol South, Level 1

Moderator: Paula Jayne, PhD, MPH

**1:35 PM Sexual Health Education for Transgender Youth: What Youth Need and How Schools Can Help**

*Leigh Szucs, PhD, CHES® and Paula Jayne, PhD, MPH*

**2:00 PM CDC's Division of Adolescent and School Health's Emerging and Ongoing Research, Evaluation, and Surveillance Priorities to Inform Program Implementation**

*Catherine Raspberry, PhD*

**E5: IGNITE60**

**NEW WAYS OF THINKING AND WORKING WITH A FOCUS ON THE NEEDS OF VULNERABLE POPULATIONS**

✓ 1.0 ENTRY

Room: Mainstage: Grand Ballroom, Level 3

Moderator: Deb S. Risisky, PhD, MEd

**1:35 PM Lessons Learned from Facilitating a Youth Community Advisory Board at a Southern Inner-City Youth Clinic**

*Andrew C. Lim, BS*

**1:40 PM Introducing Public Health Students to Missouri's Public Health Transformation Initiative**

*Tara Lutz, PhD, MPH, CHES® and Adriane Griffen, DrPH, MPH, MCHES®*



Download the mobile app to gain access to select presentations, abstracts and speaker information, polling and more!

**1:45 PM** **Clarity through Segmentation: Understanding the Motivations and Behaviors of Pregnant/Breastfeeding Women Who Use Cannabis**  
*Priscilla Fernandez, PhD*

**1:50 PM** **Introducing Public Health Students to Missouri's Public Health Transformation Initiative**  
*Carol Cox, PhD, MCHES® and Kristen Welker, PhD, CHES®*

**1:55 PM** **How an Alzheimer's Curriculum can be used to Raise Awareness about Health Inequities and Combat Stigma**  
*Tara Redd, MEd, MCHES®*

**2:00 PM** **Dementia Prepared Communities: From Feel Good to Real Change**  
*Molly E. French, MS and Cheryl Sherry, MPH, MCHES®*

**2:05 PM** **Interdisciplinary Team Approach to Facilitate Access to Healthcare for Uninsured/Low Income Residents in Partnership with a Local Food Bank in El Paso, TX**  
*Juan Aguilera, MD, MPH, Karen Del Rio, BS and Carmen Paola Guillen, BSH*

## **E6: ORAL SESSION**

### **CHANGING SYSTEMS IN GLOBAL HEALTH EDUCATION WITH WOMEN AND STUDENTS**

Δ 1.0 ADVANCED

Room: Capitol North, Level 1

Moderator: Latrice Rollins, PhD

**1:35 pm** **Adolescent Students' Knowledge of & Attitude Towards People Living with HIV/AIDS: The Impact of a Peer Public Health Education Program in Abia State, Nigeria**  
*Ursula Nnabueze, PhD and Liesl Nydegger, PhD, MPH*

**2:05 pm** **Health Education Programs for Disadvantaged Women in Bangladesh**  
*Kamrun Mustafa, PhD CHES®, Fredanna McGough, PhD and Mainul Mustafa, MPA, CHES®*

## **2:30 PM - 2:45 PM**

**BREAK**

## **2:45 PM - 4:15 PM**

### **PLENARY**

#### **PL4: IMPACT OF A CHANGING CLIMATE ON HEALTH & POPULATIONS**

Δ 1.5 ADVANCED

Room: Mainstage: Grand Ballroom, Level 3

Moderator: Lisa M. Carlson, MPH, MCHES®

**2:45 PM** **Intro: APHA and Climate Change**  
*Lisa M. Carlson, MPH, MCHES®*

**2:50 PM** **Climate Change and Human Health**  
*Paul J. Schramm, MS, MPH*

**3:20 PM** **Health Professional Leadership in Climate Action and Advocacy**  
*Rebecca Rehr, MPH*

**3:50 PM** **Questions and Answers**

## **4:15 PM - 4:30 PM**

**BREAK**

## **4:30 PM - 5:30 PM**

### **CONCURRENT SESSIONS F**

#### **F1: ORAL SESSION**

##### **RAISING THE NEED FOR FOOD ACCESS EDUCATION BY COLLABORATION**

Δ 1.0 ADVANCED

Room: Capitol Center, Level 1

Moderator: Amos O Aduroja, PhD, MSPH

**4:35 PM** **Communities, Collaborations and Commitment: A Physical Activity and Nutrition After School Program for Children**  
*E'tienne Easley, MSA, Kara Hamilton, PhD and Melissa Powell, MEd, RD*

**5:00 PM** **Role of Health Education in Changing Mindset Among Food Pantry Staff from Simply Feeding People to Being a Resource of Healthy Food Options: Combating Chronic Diseases in the Low-Income Population**

*Akinwale Akingbule, MPH and Dominique Cobbs, MPH, CHES®*

#### **F2: ROUNDTABLE**

##### **HEALTH COMMUNICATIONS AND CAMPAIGN MANAGEMENT**

✓ 1.0 ENTRY

Room: Capitol North, Level 1

Moderator: Raffy R Luquis, PhD, MCHES®

Roundtable presentations will begin at 4:35 and will switch every 15 minutes.

**Agricultural Biotechnology: Increasing Public Awareness and Understanding**  
*Kimberly Moore Smith, MHSA*

**Evaluation of a Social Media Influencer Campaign to Increase Knowledge and Positive Attitudes Toward the Flu Vaccine**

*Joe Smyser, PhD MSPH*

**Implementing Effective Health Communications Strategies through Digital Media Engagement**

*Danielle Ramos, MSW, MPH*

#### **F3: ORAL SESSION**

##### **HOW TO MAXIMIZE NONPROFIT MANAGEMENT**

Δ 1.0 ADVANCED

Room: Capitol South, Level 1

Moderator: Jagdish Khubchandani, PhD

**4:35 PM** **Key Strategies for Managing and Maximizing a Non-Profit Organization Serving Low Income Students**

*Diane Allensworth, PhD and Christi Kay, MA*



sophehealth



sophehealtheducation



sophegram



@SOPHEtweets #SOPHE2020





Download the mobile app to gain access to select presentations, abstracts and speaker information, polling and more!

**F4: ORAL SESSION**

**YOUTH ADVOCACY AND TOBACCO POLICY**

✓ 1.0 ENTRY

Room: Athens, Level 2

Moderator: Elaine R. Hicks, MS/LIS, MPH, MCHES®

**4:35 PM Building Smoke-Free Communities: Engaging, Educating and Mobilizing Youth and Youth Based Organizations to Advocate for Smoke-Free Protections**  
Vonetta Dudley, MA CHES®

**4:55 PM Don't Discount My Life: A Campaign to Keep Tobacco Prices High in Minnesota**  
Kristen Ackert, MPH

**5:10 PM Regionalization of the Youth-Led Tobacco 21 Campaign**  
Molly Pisciotano, MHA and Vanessa Yvon Manluco, MsED

**F5: ORAL SESSION**

**PUBLIC HEALTH ETHICS AND STRATEGY**

✓ 1.0 ENTRY

Room: Augusta, Level 2

Moderator: Cherylee Sherry, MPH, MCHES®

**4:35 PM Public Health Ethics and Strategy**  
Leonard Ortman, PhD

**4:30 PM - 5:30 PM**

**RECEPTION HONORING 21<sup>ST</sup> CENTURY & LEGACY DONORS**

By invitation only

Room: Macon, Level 2

**6:00 PM - 7:15 PM**

**AWARDS CEREMONY**

Supported by SAGE Publishing, Inc.

Room: Mainstage: Grand Ballroom, Level 3

**7:15 PM - 8:30 PM**

**AWARDS RECEPTION**

Supported by Fairleigh Dickinson University - School of Pharmacy & Health Sciences and University of Southern California - MPH Online Program

Room: Mainstage: Grand Ballroom, Level 3

**7:00 PM - 7:30 PM**

**POSTER PRESENTERS TEAR DOWN POSTER**

Room: Georgia Hall Pre-function, Level 1

**FRIDAY, MARCH 20**

**6:30 AM - 7:00 AM**

**POSTER SET-UP**

Room: Georgia Hall Pre-function, Level 1

**7:00 AM - 2:00 PM**

**REGISTRATION AND SOPHE STORE OPEN**

Room: Georgia Registration, Level 1

**7:00 AM - 8:00 AM**

**POSTER PRESENTATIONS**

Room: Georgia Hall Pre-function, Level 1

**7:00 AM - 8:00 AM**

**POSTER PROMENADE**

✓ 1.0 ENTRY

Room: Georgia Hall Pre-function, Level 1

**Fr1: The Community Action Poverty Simulation: A Powerful Learning Experience in Public Health to Improve Understanding of and Attitudes Towards Poverty**

Amanda Gabarda, EdD, MPH, NBC-HWC

**Fr2: Preparing the Next Generation: Strategies to Include Students with Disabilities in Health Education and Implications for the Field**

Tara Lutz, PhD, MPH, CHES®

**Fr3: Improving Access to Evidence-based Diabetes Self-management Practices at a Student-run Free Clinic: Results from a Six-month Study**

Nadia Quainoo, MPH

**Fr4: Implementation of Sexual Health Education in Elementary Grade Levels Leads to Higher Knowledge of STI/HIV Prevention and Contraception Use in Young Adulthood**

Ronald Williams, PhD, CHES®

**Fr5: Exploring How Characteristics Associated with Perinatal Community Health Shape Method of Delivery Outcomes in New York State Neighborhoods**

Christina Ventura-DiPersia, DPH, MPH

**7:00 AM - 8:00 AM**

**NATIONAL SOPHE PAST PRESIDENT'S BREAKFAST**

Room: Georgia 13, Level 1

**7:00 AM - 8:00 AM**

**CONCURRENT SESSIONS G**

**G1: IGNITE60**

**HOW TO IMPLEMENT WELLNESS IN OUR SCHOOLS**

✓ 1.0 ENTRY

Room: Augusta, Level 2

Moderator: Nicolette Powe, DrPH, MCHES®



Download the mobile app to gain access to select presentations, abstracts and speaker information, polling and more!

**7:05 AM** **Piloting and Validating A School Health and Wellness Policy Implementation Survey**  
*Rachael Dombrowski, PhD, MPH*

**7:15 AM** **At What Age?: A Collaborative Activity for Reflecting on Comprehensive Sex Education**  
*Sarah Pember, PhD, CHES®*

**7:25 AM** **Practice for a Purpose: Increasing Teachers' Comfort and Confidence to Teach Sex Education**  
*LeKara Simmons, MPH*

**7:35 AM** **Advancing Public Health Policy: The Legislative and Implementation Process of a County-Wide Stock Inhaler for Schools' Program in Arizona**  
*Lynn B. Gerald, PhD*

**7:45 AM** **Fostering Community Collaboration in School Wellness: Implementing Policy, Systems & Environmental Intervention through School Wellness Committees**  
*Dominique Cobbs, MPH, CHES®*

## **G2: ORAL SESSION LAW AND PUBLIC HEALTH**

Δ 1.0 ADVANCED

Room: Athens, Level 2

Moderator: Cynthia A. Karlsson, MS, CHES®

**7:05 AM** **The Legal Lens: A Perspective to Address Inequalities in Public Health**  
*Brianne Yassine, MPH, CHES®*

**7:35 AM** **Law as a Structural and Social Determinant of Health**  
*Montrece Ransom, JD, MPH*

## **G3: ORAL SESSION THE LATEST ON BULLYING AND RECENT RESEARCH RESULTS**

✓ 1.0 ENTRY

Room: Capitol Center, Level 1

Moderator: R. Debra Shapiro, PhD, MS, MCHES®

**7:05 AM** **If 4 Million Americans Experience This Every Day, Why Is Public Health Not Involved?**  
*Lori Dewald, EdD, ATC, MCHES®, FAAHE*

## **G4: ORAL SESSION KEEPING ISSUES RELEVANT: ZIKA VIRUS UPDATE**

Δ 1.0 ADVANCED

Room: Capitol South, Level 1

Moderator: Joseph D. Visker, PhD, MCHES®

**7:05 AM** **Out of Sight, Out of Mind: Perceptions of Zika Virus in 2019**  
*Krista Reale, MA, CHES®*

**7:35 AM** **Zika in Cameron County: Three Years Later**  
*Isabel Huerta, MPH*

## **G5: LATE BREAKING SESSION**

### **NOVEL CORONAVIRUS 2019 (COVID-19): WHAT YOU SHOULD KNOW FOR EFFECTIVE RISK COMMUNICATION**

✓ 1.0 ENTRY

Room: Capitol North, Level 1

Moderator: Christine Lynn Jones, PhD

**7:05 AM** **Novel Coronavirus 2019 (COVID-19): What You Should Know for Effective Risk Communication**  
*Kellee L. Waters, MPS*

## **8:00 AM - 8:15 AM BREAK**

## **8:15 AM - 9:45 AM**

### **CONCURRENT SESSIONS H**

#### **H1: ROUNDTABLE**

### **COLLABORATE BETWEEN EDUCATION LEADERS AND HEALTH SECTORS TO IMPROVE SCHOOL HEALTH**

Δ 1.5 ADVANCED

Room: Capitol North, Level 1

Moderator: Sarah Pember, PhD, CHES®

Roundtable presentations will begin at 8:15 am and will switch every 10-12 minutes.

**Research Translation and Implementation: Disseminating and Evaluating Evidence-based Physical Activity Programs to Improve Health Outcomes in School Settings**

*Adria Meyer, BA and Sequoya Howard, BS*

**How Low Can You Go?: Leveraging Successful Partnerships for Optimal Attrition**

*Gina Hofert, MA and Lauren Brown, MPH*

**Tailoring Dynamic Solutions for Narrowing the Nutrition Gap**

*DaNelle Jenkins, MEd, CHES® and Jasmine Nelson, BS*

**Improving Student Health by Bridging Health Education Practices with Out-of-School Time Programs**

*Michelle Dinnen-Owens, BEd, Patricia Patrick and Shauvon Simmons-Wright, MEd*

**Improving School Physical Activity and Nutrition Environments One Mini-Grant at a Time: Lessons Learned**

*Rachel Campos, MPH and Debra Kibbe, MS*

**Beyond Partnerships: Bringing Team Based Care to School-Based Asthma Management Programs**

*Rosalía Guerrero, MBA*

**Integrating Physical Activity and Nutrition: Implementing a Coordinated School-wide Approach to Impact Health Behaviors of Adolescents**

*Dana Griffith, EdD, Casey Cahill, MPH and Jordan Melton, BS, BA*



Download the mobile app to gain access to select presentations, abstracts and speaker information, polling and more!

**H2: ORAL SESSION**

**SCHOOL HEALTH: ADVOCACY & POLICY**

✓ 1.5 ENTRY

Room: Capitol Center, Level 1

Moderator: Jody Early, PhD, MCHES®

8:20 AM Elevating Beyond Programming: Using Policy, System and Environmental Changes to Promote Healthy School Environments

*Chris Stewart, CHES® and Raschell Downer, MPH*

8:55 AM Public School Comprehensive Sexuality Education Resistance Response: A Playbook for All

*Kelli Bourne, MPH, MEd*

**H3: ORAL SESSION**

**ENVISIONING A TOBACCO FREE WORLD: STRATEGIES TO ACHIEVE TOBACCO CESSATION AND PREVENTION EQUITY ACROSS THE LIFESPAN**

✓ 1.5 ENTRY

Room: Athens, Level 2

Moderator: Jovonni R. Spinner, MPH, CHES®

8:20 AM Tobacco Disparities and FDA's Position on Tobacco

*Jovonni Spinner, MPH, CHES®*

8:35 AM Socioeconomic Disparities in Vape Shop Density and Proximity to Public Schools in the United States

*Dilip Venugopal, PhD*

8:50 AM Keeping in Fresh with Hip Hop Teens: Promising Targeting Strategies for Delivering Public Health Messages Too Hard to Reach Audiences

*Merrybelle Guo, MPH*

9:05 AM DEJELO YA Media Campaign Connects Spanish Speaking Communities to Effective Support for Quitting Tobacco

*Maria Otero, BS*

9:20 AM Smoking among US Service Members Following Transition from Military to Veteran Status

*Chiping Nieh, PhD*

**H4: ORAL SESSION**

**EMERGING HEALTH EQUITY ISSUES AT THE BORDERLAND**

Δ 1.5 ADVANCED

Room: Mainstage: Grand Ballroom, Level 3

Moderator: Robert Rinck, MPH

8:20 AM Health Promotion Resulting in Community-driven Environmental Modifications in a U.S.-Mexico Border Community to Address Substance Use Disorder (SUD), HIV and Related Disparities

*Dennis Nyachoti*

8:45 AM Insights and Lessons Learned from a Community Needs Assessment of Food Access & Availability in El Paso County, TX

*Chuck Kozel, PhD, MPH, MCHES®*

9:20 AM Social Justice in the Borderlands: Using Agenda-setting to Improve Border Health Inequities and Impact Health Disparities

*Sarah Ruiz MPH, RD, LD, CDE*

9:35 AM Leveraging Partnerships to Improve our Community Food Environment: Lessons Learned from a Healthy Restaurant Initiative in the US - Mexico Border Regions

**H5: ORAL SESSION**

**THE ART OF TEACHING**

Δ 1.5 ADVANCED

Room: Capitol South, Level 1

Moderator: Amanda Lynch, MS, MCHES®

8:20 AM Demystifying Health Advocacy Using a Layered Approach During Undergraduate Training for Public Health Education Majors

*Heidi Hancher-Rauch, PhD, Angelitta Britt-Spells, PhD, MPH, Amie Wojtyna, PhD, MPH and Sara Kwiatkowski, BS*

8:45 AM Evolving Professional Preparation Programs through Constructivist Pedagogy

*Meagan Shipley, PhD, CHES® and Elisa "Beth" McNeill, PhD, CHES®*

9:10 AM Formative Assessment: A Powerful Process for Improving Learning

*Rebecca Foco, PhD, MCHES®*

**H6: LATE BREAKING ORAL SESSION**

**70 YEARS OF EXPERIENCE - HOW SHOULD SOPHE MEET THE CHALLENGES OF THE FUTURE?**

✓ 1.0 ENTRY

Room: Augusta, Level 2

Moderator: Julia Mary Alber, PhD, MPH

8:15 AM Introduction of Session

*Julia Mary Alber, PhD, MPH*

8:20 AM Contributions of SOPHE

*Jean Breny, PhD, MPH*

8:35 AM Future Challenges Facing Health Education Professionals

*Michael Eriksen, ScD*

8:55 AM Panel Questions

*Michelle L. Carvalho, MPH, MCHES®, Cynthia Karlsson, MPH, CHES®, Ashley E. Kennedy Mitchell, DrPH, MSPH and Carlos E. Rodríguez-Díaz, PhD, MPHE, MCHES®*

9:43 AM Concluding Remarks

*Julia Mary Alber, PhD, MPH*

**9:45 AM - 10:00 AM  
BREAK**

**10:00 AM - 11:30 AM**

**CONCURRENT SESSIONS I**

**II: ORAL SESSION**

**SCHOOL HEALTH: NUTRITION & PHYSICAL ACTIVITY**

Δ 1.5 ADVANCED

Room: Capitol South, Level 1

Moderator: Deborah Fortune, PhD, FAAHE

10:05 AM Read by 3rd: A Model to Promote Parental Involvement, Healthy Eating, and Reading Proficiency

*Caitlin Merlo, MPH, RD*



Download the mobile app to gain access to select presentations, abstracts and speaker information, polling and more!

**10:25 AM** Preliminary Findings from a Text Message Strategy to Improve Sugar-Sweetened Beverage Behaviors Among Rural Middle School Caregivers  
*Annie Loyd, MPH, RDN, CHES® and Brittany McCormick, DHSC, MPH*

**10:55 AM** Changing Minds and Plates: Farm to Early Care and Education in Georgia  
*Caitlin Merlo, MPH, RD and Nancy Brenowitz Katz, MS, RDN*

**12: ORAL SESSION**  
**COLLEGE HEALTH AND WELLNESS**

✓ 1.5 ENTRY

Room: Athens, Level 2

Moderator: TeriSue Smith-Jackson, PhD, MPH

**10:05 AM** Filling the Missing Gap in Utah's YRBSS Data: Assessing the Sexual Knowledge, Attitudes and Behavior of College Students  
*TeriSue Smith-Jackson, PhD, MPH*

**10:30 AM** Sustain-a-BULL Future: A Program to Reduce Food Waste Generated by Undergraduate Students at University Dining Halls  
*Melissa Miller, MPH*

**11:00 AM** Using Stories of Student Food Insecurity to Support and Advocate for Change on a College Campus  
*Jessie Dexter, MPA and Ellen Shafer, PhD, MPH, MCHES®*

**13: ORAL SESSION**  
**BEST PRACTICES AND HEALTH EDUCATION WITH FATHERHOOD**

Δ 1.5 ADVANCED

Room: Capitol Center, Level 1

Moderator: Jennifer Banas, MPH, MEd, EdD, CHES®

**10:05 AM** Pedagogical Approaches for Incorporating "Fatherhood" into Professional Development and Training for Public Health Professionals for Overall Family Health Promotion  
*Christine Bozlak, PhD, MPH*

**10:40 AM** Like Father, Like Son: The Influence of Fathers on Young Black Men's Health Seeking Behaviors  
*Ashley Jones, PhD, MPH, CHES®*

**11:05 AM** Preparing Professionals to Engage Fathers: Father-Inclusive Education as a Catalyst for Change  
*Latrice Rollins, PhD, MSW*

**14: ROUNDTABLE**  
**SERVICE-LEARNING: WHAT IS IT? WHAT IT IS NOT? WHY SHOULD I CARE?**

✓ 1.5 ENTRY

Room: Capitol North, Level 1

Moderator: Antonio Gardner, PhD, MS, CHES®

Roundtable presentations will begin at 10:00 am and will switch every 20 minutes.

High Impact Practices and Service-Learning Experiences in Undergraduate Curricula to Gain Mastery of Responsibilities and Competencies for Health Education Specialists

*Charity Bishop, MS, CHES® and Lisa Yazel-Smith, MS*

Service Learning in the Health Education Capstone Experience: Evaluating Volunteerism, Civic Engagement, and Social Change Competencies through an Integrative Community-based Participatory Research Curriculum  
*Christina Jones, PhD*

Best Practices for Preparing Students for the Health Education Workforce through the Integration of Practice and Theory  
*Ashley Parks, DrPH, MBA, MCHES®, CPH*

Preparing Faculty in Critical Service-Learning Pedagogy: A Justice-Oriented Model of Professional Development  
*Tyler Derreth, PhD*

**15: ORAL SESSION**  
**COMBATTING THE OPIOID EPIDEMIC**

Δ 1.5 ADVANCED

Room: Mainstage: Grand Ballroom, Level 3

Moderator: Caille Spear, PhD, MCHES®

**10:05 AM** Starting the Conversation: Exploring Messaging Approaches on Prescription Opioid Use and Misuse for Patients  
*Priscilla Fernandez, PhD*

**10:45 AM** Reasons for Ppoid Misuse: Identifying Gaps in Knowledge and Social Norms Associated with Risky Use of Prescription Opioids  
*Katie McCabe, MPH*

**16: LATE-BREAKING ORAL SESSION**  
**NEW CDC RESOURCES TO ENHANCE YOUR HEALTH EDUCATION PRACTICE**

✓ 1.5 ENTRY

Room: Augusta, Level 2

Moderator: Angela Mickalide, PhD, MCHES®

**10:00 AM** Advancing Health Education in Schools: Updates from CDC's Division of Adolescent and School Health  
*Leigh E. Szucs, PhD, CHES®*

**10:20 AM** Preventing HPV-associated Cancers: Updates from CDC's Division of Cancer Prevention and Control  
*Nikki Hayes, MPH*

**10:40 AM** What's New in Tobacco Best Practice User Guides: Updates from CDC's Office of Smoking & Health  
*Michon Mabry, MPH and Stephanie Andersen, MPA*

**11:10 AM** Preventing Injuries: Strategic Initiatives of CDC's Division of Injury Prevention  
*Judith R. Qualters, PhD, MPH*

**11:30 - 11:45 AM**  
**BREAK**

**11:45 AM - 1:15 PM**

**CLOSING PLENARY**  
**PL5: ENSURING THE FUTURE OF CHILDREN & FAMILIES**

✓ 1.5 ENTRY

Room: Mainstage: Grand Ballroom, Level 3

Moderator: Deborah Fortune, PhD, FAAHE





Download the mobile app to gain access to select presentations, abstracts and speaker information, polling and more!

**FAHE AWARD ANNOUNCEMENTS**

*William Potts-Datema, DrPH, MCHES®, FAHE President*

**ENSURING THE FUTURE OF CHILDREN & FAMILIES**

*Presenter: Jennifer Ngandu, MPH*

**PRESIDENT'S REMARKS AND CONFERENCE RECAP**

*Cam Escoffery, PhD, MPH, CHES®*

**SOPHE OVER THE DECADES**

**SEE YOU IN ST. LOUIS!**

*Darcell Scharff, PhD, Trustee 2021 Annual Meeting and Molly Brown, MPH, Speaker of the House*

**2:00 PM - 5:00 PM**

**POSTER BOARD DISMANTLE**

Room: Georgia Hall Pre-function, Level 1

**2:00 - 4:00 PM**

**POST-CONFERENCE: NUMERICAL HYGIENE: PROMOTING HEALTH NUMERACY IN PROFESSIONAL PREPARATION OF HEALTH EDUCATORS**

Δ 2.0 ADVANCED

Room: Capitol Center, Level 1

*Presenter: William M. London, EdD, EdM, MPH*

**2:00 PM - 4:30 PM**

**POST-CONFERENCE: SCHOOL HEALTH: SOCIAL AND EMOTIONAL LEARNING**

✓ 2.5 ENTRY

Room: Capitol South, Level 1

*Moderator: Jordan Buckley, MPH, CHES®*

*Presenter: Rose Prejean-Harris, PhD*

**SATURDAY, MARCH 21**

**8:30 AM - 4:30 PM**

**POST-CONFERENCE WORKSHOP**

**USING HECAT TO IMPROVE YOUR HEALTH EDUCATION PROGRAM**

Room: Athens, Level 2

*Presenter: Susan K. Telljohann, HSD, CHES®*

**9:00 AM - 4:00 PM**

**POST-CONFERENCE WORKSHOP**

**BUILDING CAPACITY AND STRENGTHENING WSCC TEAMS: A SERIES OF TRAINING MODULES FOR STATES AND DISTRICTS**

Room: Atlanta Ballroom 1&2, Level 1

*Presenter: Christi Kay, MEd*

**SUNDAY, MARCH 22**

**8:30 AM - 4:30 PM**

**POST-CONFERENCE WORKSHOP**

**USING HECAT TO IMPROVE YOUR HEALTH EDUCATION PROGRAM**

Room: Athens, Level 2

*Presenter: Susan K. Telljohann, HSD, CHES®*

**NOTES**

Horizontal lines for taking notes.

# POSTERS

Visit SOPHE's history poster throughout the conference! Located in the registration area.

## H7O: Celebrating 70 Years of SOPHE Excellence

M. Elaine Auld, MPH, MCHES, Society for Public Health Education;  
Julia Alber, PhD, MPH, California Polytechnic State University; Zebley Foster, BA, Society for Public Health Education

## WEDNESDAY, MARCH 17

Authors will be in Pre-Function Georgia Hall and in the Georgia Hall:  
5:00 PM - 6:00 PM

### \*We1: Theory of Planned Behavior Path Model Predicting Latinx/Hispanic College Student Condom Use

Eric Conrad, PhD, CHES®

### \*We2: Self-Reported Mentorship Needs and Preferences of Health Education and Promotion Students

Ashley Parks, DrPH, MA, MPH, MCHES®, CPH

### \*We3: A Program Evaluation of a Pilot Service-Learning Intervention: Improving Fruit/Vegetable Intake Among Older Adults

Audra Gollenberg, PhD

### \*We4: Our Role in Promoting Health Education Specialists

Nicolette Powe, DrPH, MS, MCHES®

### \*We5: Cancer Risk Perception Predictors for Total Body Skin Examinations: A Cross Sectional Study Using HINTS 2017 Data

Meghann Wheeler, PhD

### We6: Ring the Bell for Sickle Cell: Encouraging Advocacy in an Underserved Population

Ellen Bloom, MPH, MCHES®

### We7: Substance Use to Exercise: Are We Moving from One Addiction to Another?

Anita Segó, MCHES®

### We8: Understanding Social Support Complexities for African American Mothers to Improve Breastfeeding Outcomes

Nicole Peritore, PhD, CHES®

### We9: "How do you define risk?": Application of Motivational Interviewing and Vocal Cues to Motivate STI and HIV Testing

Malynda Johnson, PhD

### We10: PEN-3 Cultural Model: Identifying Effective Cultural Adaptations for Use in Obesity Lifestyle Interventions Targeting African American Women

Shelly-Ann Bowen, PhD

### We11: National, State, and Local Partnerships for Car Seat Education

Amanda Kay Jackson, MPH, CHES®, CPH

### We12: Health Communication Workforce Development in Preparedness and Safety Messaging for Hurricanes, Flooding and Similar Disasters through Virtual Training

Nykiconia Preacely, PhD

### We13: African American Women's Health: Testing the Multi-theory Model (MTM) Intervention Design to Increase Fruits and Vegetables Consumption

LaVonne Denise Brown, MEd

### We14: Using a Systematic Approach to Health Education: The CDC TB Program Managers' Course

Peri Hopkins, MPH

### We15: Lessons Learned from Delivering a Faith-Based Weight Loss Group Health Coaching Program in an Underserved Community

Christian B. Gabarda, MS

### We16: Institutional Ethical Responsibilities in Addressing Violence Prevention: What do Academics think?

Sely-Ann Ayiesha Headley, MPH

### We17: A Longitudinal Photovoice Exploration: Linking Science to the Social Justice and Health Promotion Needs of Women Refugees from the Democratic Republic of Congo in the U.S.

Shannon McMorrow, PhD

### We18: Creating an Educational Pipeline to Promote Health Education/Promotion to Employers using Academic Internship Programs

Beth H. Chaney, PhD, MCHES®

### We19: Medication Assisted Treatment in the Rural United States: Results from a Systematic Review

John Bresett, MS

### We20: Advancing the Science of Program Adaptation for Health Promotion

Lillian Madrigal, MPH

### We21: How Public Libraries Help Immigrants Adjust to Life in a New Country: A Systematic Review

Suzanne Grossman, DrPH, MSc

### We22: Expanding a Tobacco Treatment Program in Pennsylvania's State Correctional Institutions

Livia Greenbacker, MS

### We23: The Impact of the HUD Smoke free Policy on PA Free Quitline and PA Local Cessation Programming among Residents in Public Housing

Alexandra Ernst, MPH

### We 24: The Effectiveness of the Community Navigator Model in Asian Populations of Georgia

Smitha Ahamed, MPH, MA

### We25: Hands on Smiles – Bridging the Gap between Dental Professionals and Populations with Intellectual Disabilities

Melissa Miller, MPH, CHES®, CPH

\* These posters have been highlighted for continuing education credit. We encourage you to visit the posters and hear from each presenter during the designated Poster Promenade time each day.

**We26: Effects of a Brief Educational Program on Knowledge about Emergency Preparedness, Chronic Disease Recognition and Prevention among Latinos in Immokalee, Florida**

*Payal Kahar, PhD*

**We27: Contraceptive Usage Among Women Utilizing a Free Medical Clinic: Opportunities for Health Education**

*Audra L. Gollenberg, PhD*

**We28: PrEP Knowledge, Attitudes, and Intentions of Black College Students in the South**

*Samuella Ware, MPH, CHES®*

**We29: A Trauma-informed Stress Management Intervention for a Medical Unit of US Army Reservists**

*Kristen Welker, PhD, CHES®*

**We30: (Re)designing Health Communications on Campus: Testing a Design Thinking Approach to Developing Health Campaigns**

*Julia Mary Alber, PhD, MPH*

**We31: Strategies for Cross-Course Collaboration: Lessons Learned from Creating Integrated Skill-Building and Experiential Learning Courses**

*Regan M. Johnson, PhD*

**We32: English-as-a-Second Language Health Literacy Program: The Process of Engaging Diverse Stakeholders for a Social Practice**

*Bonnie McIntosh, MPH, MBA*

**We33: Factors Influencing Implementation and Evaluation of a Rural Health Equity Initiative**

*April Hermstad, MPH*

**We34: Using Data for Quality Improvement and Enhancing Implementation**

*Phyllis Ottley, PhD*

**We35: Using Technology as a Statewide Engagement Tool**

*Molly Pisciotto, MHA*

**We36: The Relationship Between Tobacco Use and State Political Affiliation**

*Ruben Juarez, BS*

**We37: Community Engagement as a Board Member: Lessons Learned from a Health Education Specialist**

*Frederick W. Schulze, PhD*

**We38: Examining the Readiness of Rural African American Barbershop Patrons for Barbershop-Based HIV Prevention Programs**

*Antonio Gardner, PhD, MS, CHES®*

**We39: "Know it, Control it": Outcomes of a Culturally customized Hypertension Awareness and Management Education Program for Bhutanese Refugees**

*Sharon Morrison, PhD, MS*

**We40: Using Human Centered Design Methods in Public Health to Fully Engage Others: Empathy Maps and Journey Mapping**

*Amanda R. Gabarda, MPH, MS, CHES®*

**We 41: Cannabidiol (CBD) in 2020: An Opportunity for Meaningful Health Education Intervention**

*Meghann Wheeler, BSH*

**We42: Human Subjects Research Protections: Training, Evaluation and Implementation**

*Marinda Logan, MPH and Alicia May, BS*

## THURSDAY, MARCH 19

Authors will be in Pre-Function Georgia Hall and in the Georgia Hall: 12:00 PM - 1:00 PM

**\*Th1: Exploring the Impact of Storytelling on Storytellers in a Hepatitis B Health Communication**

*Julia Alber, PhD, MPH*

**\*Th2: Campus Readiness: Preventing and Responding to an Active Threat**

*Sely-Ann Headley, PhD, MPH*

**\*Th3: Using Windshield Surveys as an Assessment Tool: Assessing Neighborhood Risks and Protective Factors for Violence**

*Erica Payton, PhD, CHES®*

**\*Th4: Examining College Students' Use, Perceptions, and Knowledge of Marijuana and Marijuana Laws**

*Meghan Burroughs, PhD, MA, CHES®*

**\*Th5: The Connection between Religious Involvement & Performance of Health Promoting Behaviors among African American Men: Findings from the Healthy Eating Activity Rest Together (HEART) Matters Study**

*Larrell Wilkinson, PhD, MSPH, CHES®*

**Th6: A Plan for Addressing Food Deserts in Kalamazoo**

*Robert J. Bensley, PhD, MCHES®*

**Th7: College Student Mentors: Improving Mental Health of Children who are Refugees**

*Laura Nabors, PhD, CPH*

**Th8: A Qualitative Exploration of Perceived Factors Leading to College Weight Gain**

*Retta R. Evans, PhD, MCHES®*

**Th9: Do Those who Attend Together Get Fit Together? Assessing the Differential Impact of an Exercise and Nutrition Education Intervention on those who Attend Alone Verses those who attend with Close Others**

*Christina Lynn Jones, PhD*

**Th10: The Evolution of an Undergraduate Public Health Capstone Course for Students Concentrating in Community Health Education and Global Health: Lessons Learned**

*Hannah Priest Catalano, PhD, MEd, MCHES®*

\* These posters have been highlighted for continuing education credit. We encourage you to visit the posters and hear from each presenter during the designated Poster Promenade time each day.

# POSTERS (CONT.)

- Th11: Improving Diabetes Literacy through Service Learning in Health Education/Promotion**  
*Jen Nickelson, PhD, MS, MCHES®, RD*
- Th12: Public Health Workforce Training Gaps: Differences in Self-Reported Skills across Educational Categories in the Public Health Workforce**  
*Ashley V Parks, DrPH, MBA, MCHES®, CPH*
- Th13: Challenging but Important Conversations: Introducing Diversity and Inclusion into a Major's Introductory Class**  
*Stephanie Baller, PhD*
- Th14: E-Cigarettes and Conventional Cigarettes: Perceived Risks and Benefits among College Students**  
*Evi Addoh, BDS*
- Th15: Developing and Testing a Transactional eHealth Literacy Instrument**  
*Samantha R Paige, PhD*
- Th16: Working Upstream to Improve Adult Health Outcomes: Using Health-related Factors to Predict Undergraduate Retention**  
*Melissa Grim, MPH, MCHES®*
- Th17: Evaluation of Kognito to Increase Mental Health Literacy Among University Faculty and Staff**  
*Concha Prieto, MPH*
- Th18: Diabetes Self-care: A Comparative Analysis of Commercial Diabetic Applications against AADE recommended Behaviors for Self-management of Diabetes**  
*Joy L Rodgers, MCHES*
- Th19: Fostering Health Education as a Catalyst for Social Justice: Pedagogical Practices for Pre-Professional Programs**  
*Bonni C Hodges, PhD*
- Th20: Health Promotion Student Association: History, Opportunities, and Vision of an Inclusive, Interdisciplinary Health Promotion Student Organization at a Hispanic Serving Institute – UT El Paso**  
*Karen Del Rio, BS*
- Th21: What's Change Got to Do with It? Developing Trainings to Build Resilience for Turbulent Times**  
*Melissa Alperin, EdD, MPH, MCHES®*
- Th22: Collaborative Student Led Walking Program: Quality Improvement Data for 1 Year Partnership between an Immigrant Resource Center and a Health Sciences University**  
*Kaitlyn Todd, BS*
- Th23: A Social Marketing Approach to Increase Utilization of an Online Self-Help Program among Male University Students**  
*Amy Gatto, MPH*
- Th24: Using a Peer Education Approach to Create an Educated Culture of Friends**  
*Grace Turner, MPH*
- Th25: The Effects of Stigma on College Student Sex Workers**  
*Heather Tillewein, PhD, MPH, CHES®*
- Th26: Gun Policies on Michigan University Campuses**  
*Robert J Bensley, PhD, MCHES®*
- Th27: Concealed Gun Policy and Student Perceptions in Michigan College Campuses**  
*Robert J Bensley, PhD, MCHES®*
- Th28: Examining College Women's Hookup Behaviors and Condom Negotiation Strategies Used with Their Online and Offline Partners**  
*Jennifer L. Evans, PhD, MEd, MCHES®*
- Th29: "You Know Me...": Reasons Women Give for Having an Abortion**  
*Jennifer L. Evans, PhD, MEd, MCHES®*
- Th30: Needs Assessment of Student Financial Loan Stress and Program at WMU**  
*Amos O Aduroja, PhD, MCHES®*
- Th31: Evaluation of Collection and Advertisement Methods of Eta Sigma Gamma Student-led Holiday Food Drives**  
*Colleen Elizabeth Cook, BS*
- Th32: Confetti Assessment Initiative for Campus Environmental Health: An Eta Sigma Gamma and What Goes Here Flows Here Partnership**  
*Colleen Elizabeth Cook, BS*
- Th33: A Time Management and Stress Study Among Health Professional Students at Western Michigan University**  
*Amos O Aduroja, PhD, MCHES®*
- Th34: Prohibition - A look at a Policy from a Century Ago and How it has Influenced Health Education**  
*Alan J Sofalvi, PhD, CHES®*
- Th35: Assessing the Multicultural Competency of Future Health Care Professionals**  
*Bridget Lally, BA*
- Th36: Exploring Identity Formation and Identity Salience Among Sexuality Educators**  
*Awarded Intern, R. Brick Lancaster Community Health Internship  
Caitlin Holden, MS, CHES®*
- Th37: Falling for Smartphones: A Personalized Message-Based Intervention to Reduce Injury from Smartphone Use While Walking**  
*Fellow, SOPHE/CDC Student Fellowship in Injury Prevention  
Brian Pugliese, MA*
- Th38: Harm Reduction in Little Five Points**  
*Fellow, SOPHE/CDC Student Fellowship in Injury Prevention  
Sarah Febres-Cordero, BSN, RN*

\* These posters have been highlighted for continuing education credit. We encourage you to visit the posters and hear from each presenter during the designated Poster Promenade time each day.



**Th39: Attitudes, Intent and Social Norms for Exercise and Healthy Eating among African Americans with End Stage Renal Disease: A Qualitative Study**

*Fellow, SOPHE Student Fellowship in Patient Engagement  
Jessica Woodard, BA*

**Late-Breaking Student (LBS) Poster Presentations**

Authors will be in Pre-Function Georgia Hall and in the Georgia Hall:  
12:00 PM - 1:00 PM

**LBS1: College Student Consent Education: Implications for Health Policy**

*Kaitlin Potter, BS*

**LBS2: Family Composition and the Conformity to Masculinity Norms**

*Nicoletta Valonzano, BA, BS*

**LBS3: Marketing, Modeling, or Mindful Choices? Marketing Healthy Foods in Low Income Neighborhoods: Recommendations from Stakeholders**

*Bree Bode, PhD, MPH, CHES®*

**LBS4: A Community-Based Participatory Research Approach for Adapting a Mindfulness-Based Intervention for Caregivers of Justice Involved Youth**

*Author: Marcia J. Ash, MPH*

*Co-Authors: Kaitlin N. Piper, MPH, Briana E. Boykin, Amy Elder, Briana Woods-Jaeger, PhD*

**LBS5: Advocating for an HIV/AIDS Community Health Improvement Plan Among College Students: Application of the Mobilizing for Action Through Planning and Partnerships Framework**

*Sharon M. Lovett, MPH, CHES®*

*Co-Authors: Michelle C. Slawinski; Andrew C. Lim; Brittany N. Gray; Igbagbosanmi O. Oredein; Disha I. Jain*

**LBS6: VaporLies Health Education Program for Children and Adolescents in Lynchburg, VA**

*Raj Patel, MPHc, Julia Jackson, MPHc*

**LBS7: E-Cigarette Beliefs among U.S. Adults**

*Rebeca Almeida, ABA, Julia Alber, PhD, MPH*

*Co-authors: Kimiya Ganjooi, Lorraine Jackson*

**LBS8: Program Evaluation of an HIV/AIDS Educational Intervention in Cariamanga, Ecuador**

*Chelsea Iles, OMS-II*

**LBS9: Behavioral and Academic Impact of Electronic Cigarettes: A Mixed Method Study of Users and Non-Users Among A College Population**

*Sahira S Mughal, BS, Simranpreet Kaur, BS*

**LBS10: Analysis of Access to Western Medicine and Insurance System of Women in Rajasthan, India.**

*Estela Delgado Rodriguez, BS*

**LBS11: Improving Health Equity in Rural Costa Rica Through Community-Based Participatory Research**

*Brandon Lachappelle, BS*

**LBS12: A Mixed Method Study to Assess Health Care Readiness of College Students**

*Mariah Welke, CHES®*

**FRIDAY, MARCH 20**

Authors will be in Pre-Function Georgia Hall and in the Georgia Hall:  
7:00 AM - 8:00 AM

**\*Fr1: The Community Action Poverty Simulation: A Powerful Learning Experience in Public Health to Improve Understanding of and Attitudes Towards Poverty**

*Amanda Gabarda, EdD, MPH, NBC-HWC*

**\*Fr2: Preparing the Next Generation: Strategies to Include Students with Disabilities in Health Education and Implications for the Field**

*Tara Lutz, PhD, MPH, CHES®*

**\*Fr3: Improving Access to Evidence-based Diabetes Self-management practices at a Student-run Free Clinic: Results from A six-month Study**

*Nadia Quainoo, MPH*

**\*Fr4: Implementation of Sexual Health Education in Elementary Grade Levels Leads to Higher Knowledge of STI/HIV Prevention and Contraception Use in Young Adulthood**

*Ronald Williams, PhD, CHES®*

**\*Fr5: Exploring How Characteristics Associated with Perinatal Community Health Shape Method of Delivery Outcomes in New York State Neighborhoods**

*Christina Ventura-DiPersia, DPH, MPH*

**Fr6: Cancer Risk Perception Predictors for Total Body Skin Examinations: A Cross Sectional Study Using HINTS 2017 Data**

*Meghann Wheeler, MPH*

**Fr7: Quasi-Experimental Project to Determine Effectiveness of Driving Simulator and Distracted Driving Videos Impacting Texting and Driving Attitudes and Behaviors**

*Theresa Enyeart Smith, PhD, MS*

**Fr8: Assessing the Effectiveness of a Technology-Mediated Course Module to Improve School Health Advocacy Intentions**

*Eric Conrad, PhD, MA, CHES®*

**Fr9: Librarian Collaboration with Patient Educators to Create Training Guides for Consumer Health Resources**

*Lindsay E Blake, MLIS, AHIP*

**Fr10: Resilience and Physical Activity among Women Living with Chronic Pain**

*Lauren Sue Davis, MPH*

\* These posters have been highlighted for continuing education credit. We encourage you to visit the posters and hear from each presenter during the designated Poster Promenade time each day.

# POSTERS (CONT.)

- Fr11: Identification of Structural Interventions for HIV Prevention: A Systematic Review**  
*Terrika Barham, PhD, MPH*
- Fr12: A Campus Campaign to Reduce E-cigarette Use**  
*Lydia J Burak, PhD*
- Fr13: The Association Between Self-Efficacy, Outcome Expectations, and Selected Socio-Demographic Variables and Patients' Self-Management of Chronic Kidney Disease**  
*Amy Joanna Wotring, PhD*
- Fr14: Increasing Healthy Lifestyle Behaviors Among Medicare Beneficiaries through a Healthy Church Challenge**  
*Camille Clarke-Smith, EdD, MPH*
- Fr15: Moving from Knowledge Translation to Implementation: Developing Online Resources to Support the Implementation of Comprehensive Violence Prevention Efforts**  
*Lindsey Barranco, PhD*
- Fr16: The Impact of SNAP-Ed in Georgia**  
*Latresh Davenport, MPH*
- Fr17: Beyond Freezer Meals: Modeling Women's Reported Challenges during and Proposed Solutions for the Postpartum Period**  
*Susan Roberts-Dobie, PhD, CHES®*
- Fr18: Talking about Adolescent Health Risks: It's Complicated!**  
*Rachael Picard, MPH*
- Fr19: Collaborating Across Sectors: The Second Annual Tribal Opioid Summit Program Evaluation**  
*Maggie E. Magoon, PhD*
- Fr20: Examining Beliefs and Attitudes Towards the HPV Vaccine Among Adults Aged 18-45 Years Old**  
*Julia Mary Alber, PhD, MPH*
- Fr21: Utilizing Discipline-Based Service Learning as a High-Impact Practice to Increase Student Understanding of NCHEC Responsibilities and Competencies**  
*Charity Bishop, MA, CHES®*
- Fr22: Consumer Knowledge and Behavior During Grocery Shopping: A National Observational Study**  
*Lulu Almutairi, BS, CHES®*
- Fr23: Implementation of a Sexual and Reproductive Health Education in Sub-Saharan Africa**  
*Joanne Chopak-Foss, PhD*
- Fr24: Poverty Simulation as a Pedagogical Strategy for Students, Employees, and Community Members**  
*Patsy Barrington, MCHES*
- Fr25: Safe-Sex Curriculum is More Effective than Abstinence Only in Adolescents at Reducing Sexually Transmitted Infections**  
*Rebecca M Toland, PhD, CHES®*
- Fr26: The Development and Evaluation of a School Climate Videogame Intervention**  
*Claudia-Santi Fernandes, EdD, MA, MCHES®*
- Fr27: Educating Youth for Healthy Eating with Cooking Matters**  
*Ashley Rouse, BA, Dasia Harmon, MS*
- Fr28: The "Healthy Moms, Healthy Communities" Immersive Learning Project: Conducting Qualitative Interviews to Inform a Photo Voice Intervention in an Undergraduate Health Promotion Planning and Anthropology Course**  
*Jean Marie S. Place, PhD, MPH, MSW*
- Fr29: Support for Nutrition Standards for Foods Available for Children and Adults Where They Live, Work, Learn, and Play from a 2018 National Survey of US Adults**  
*Seung Hee Lee, MD, PhD, MS*
- Fr30: An Analysis of the Relationship between Income, Gender, and Perception of Gun Violence in One's Local Community**  
*Ashley V Parks, DrPH, MPH, MA, CPH, MCHES®*
- Fr31: Facilitating Pregnant Women's Access to Information on Congenital Cytomegalovirus (CMV) through Health Promotion Activities**  
*Holly Rebecca Patrick, PhD*
- Fr32: Using Results to Leverage Community Partnerships that Impact Change**  
*Heather Rice, BS, CHES®*
- Fr33: Using the Theory of Planned Behavior to Predict Intention to Use Male-Directed Contraceptive Methods Among College Students**  
*James M. Bishop, MEd, CHES®*
- Fr34: An Evaluation of Fittspirations Viewing and Exercise Behavior in College Students**  
*Kristen Welker, PhD, CHES®*
- Fr35: Missed Opportunities with Hepatitis A Vaccination: A Cross-sectional Study using the National Immunization Survey of 2017**  
*Kaylan Nichole Fitch, BS*
- Fr36: Increasing Nutrition Benefit Program Participation and Redemption at Oklahoma Farmers Markets**  
*Jade Owen, MPH, CHES®, CPH*
- Fr37: Understanding the Impact of Parental Involvement in Cyberbullying Perpetration Among African American Adolescents**  
*Dashauna Ballard, MPH*
- Fr38: Developing an Effective Communication Model Based on Evidence Based Practices to Reduce Maternal Mortality Rate In the US**  
*Prachi Joshi, DrPH, MA*
- Fr39: Leveraging Government Financial Resources to Support Community Improvements**  
*Suzanne Sanders, MPH, MCHES® and Candra Riley MPH*
- Fr40: Physical and Sexual Dating Violence Victimization Related to Multiple Risky Health Behaviors among U.S. Adolescents**  
*Ron Williams, Jr., PhD, CHES®*

\* These posters have been highlighted for continuing education credit. We encourage you to visit the posters and hear from each presenter during the designated Poster Promenade time each day.



EMORY

ROLLINS  
SCHOOL OF  
PUBLIC  
HEALTH



# EXPLORE ROLLINS!

Your interest in public health indicates that you have chosen to commit your time, energy, and talent to serving others. At Rollins, we are dedicated to fostering scholars that protect and improve the health of communities at the local, national, and international levels.

- » Top 5 nationally ranked school of public health
- » Internationally renowned research centers
- » 6 academic departments and an Executive MPH program for working professionals
- » Prominent, award-winning faculty
- » Customized learning

[sph.emory.edu](http://sph.emory.edu)



SCHOOL OF  
PUBLIC HEALTH

# URBAN FOCUS GLOBAL REACH

Offering the following graduate and professional programs:

Doctor of Philosophy in Public Health (PhD) • Doctor of Public Health (DrPh)

Master of Public Health/Juris Doctor • Master of Public Health/PhD in Community Psychology

Master of Public Health • Graduate Certificate in Public Health

*concentrations include:*

Biostatistics • Environmental Health • Epidemiology

Health Management & Policy • Health Promotion & Behavior

*Advance your career as a public health leader.*

**Learn more at [publichealth.gsu.edu](http://publichealth.gsu.edu)**



**@PHGSU**

**#GSUPublicHealth**

# Thank you to the SOPHE 2020 Annual Conference Planning Committee!

## Elizabeth Stevenson, MPH 2020 ANNUAL CONFERENCE TRUSTEE

### ABSTRACT WORKGROUP

Kathleen Allison, Co-chair, PhD, MPH, MCHES®  
La Verne Partlow, Co-chair, MEd  
Kelly Bishop, MA, MCHES®  
Brittney Bratcher-Rasmus, MS, CHES®  
Joanne Chopak-Foss, PhD  
Rebecca Foco, PhD, MCHES®  
Jagdish Khubchandani, MD, PhD, MPH, CHES®  
Minh Luu, MPH  
Alexandra Patton, BS, PTCB  
Erica Payton, PhD, CHES®  
Ninfa Pena-Purcell, MS, CHES®  
Jessica M.K. Streit, PhD, CHES®  
Leigh Szucs, PhD, CHES®  
Katie Wagoner, MPH, MCHES®

### CONTINUING EDUCATION WORKGROUP

Kirsten Rogers, Co-chair, EdD, MSPH, MCHES®  
Davondra Brown, MEd, MCHES®  
Kaitlin Cartoccio, MPH, MCHES®  
Kay Deaner, MEd, RN, CHES®  
Nicollette Powe, DrPH, MS, MCHES®  
Joe Visker, PhD, MCHES®

### SOCIAL EVENTS WORKGROUP

Tamara Mason, Chair, MPH, CHES®  
Angela Drumm, MPH, CHES®  
Antonio Gardner, PhD, MS, CHES®  
Amanda Ichite, MPH, CPH  
Lesley Leonard, EdD, CHES®  
Nandi Marshall, DrPH, MPH, CHES®  
Inuka Midha, PhD, MPH, MCHES®  
Matt Weinburke, DrPH, CHES®

### PROGRAM WORKGROUP

Bill Potts-Datema, Chair, DrPH, MS, MCHES®  
James Bemel, PhD, MPH, CHES®  
Nakeitra Burse, DrPH, MPH, CHES®  
Anders Cedergren, PhD, CHES®  
Jennifer Evans, PhD, MEd, MCHES®  
Megan Flanagan, MPH  
Sherry Grover, PhD, CHES®  
Bonni Hodges, PhD, MS  
Cynthia Karlsson, MPH, MS, CHES®  
Holly Moses, PhD, MS, MCHES®  
Sarah Pember, PhD, MT, CHES®  
Joy Rodgers, PhD, MCHES®  
Meagan Shipley, PhD, CHES®  
Lisa Shook, MA, MCHES®  
Julie Soules, AGS  
Deitra Wengert, PhD, MCHES®  
Victoria Zigmont, PhD, MPH

### STUDENT ENGAGEMENT WORKGROUP

Meghan Burroughs, Chair, PhD, MA, CHES®  
Bukunmi Gesinde, MPH, CPH  
Danielle Gilmore, PhD, MPP, CHES®  
Angela Glymph, PhD  
Sely-Ann Headley, MPH  
Regan Johnson, MEd, MCHES®  
Christina Jones, PhD  
Belle Lovings, MEd, MBA  
Rhonda Rahn, PhD, MS, CHES®  
Skye McDonald, MS, CHES®

## Thank you to our SOPHE Affiliate Organizational Membership (AOM) Partners

California State University at Northridge

Farleigh Dickenson University

IQ Solutions

National Commission for Health Education Credentialing

Southern Connecticut State University

Walden University

## SOPHE invites you to join its Affiliate Organization Member (AOM) program.

AOMs offer valuable educational programs, products, tools, publications, services and resources. An AOM partnership can strengthen the connections between educational programs and the workforce to meet contemporary and future health challenges.

### BENEFITS

- Exclusive savings on marketing, promotion, and advertising opportunities that showcase your products and services.
- Recognition as a leading and visible partner, dedicated to improving the health of children, adults and other populations.

**Contact [membership@sophe.org](mailto:membership@sophe.org) for more information or to start your application today.**





## SOPHE Legacy Circle Donors

### DIAMOND (\$15,000 +)

#### **M. Elaine Auld\*\***

Michael Fagen

#### **Jeffrey Goodman\*\***

Patricia Mail\*

Scott Simonds

### PLATINUM (\$10,000-\$14,999)

### GOLD (\$5,000 - \$9,999)

Anonymous

John Allegrante

#### **Flora Bloom\*\***

#### **Elizabeth Stevenson\*\***

### SILVER (\$2,500 - \$4,999)

Kathy Crosson\*

Joe & Christina Dake\*\*

Andrea Gielen\*\*

Edward Roccella\*\*

David Sleet

### BRONZE (\$1,000 - \$2,499)

#### **Jean Breny\***

Sandra Bulmer

#### **Ellen Capwell\*\***

William Cissell

Sara Cole

Randall Cottrell\*

Deborah Elmes

Cam Escoffery\*

Carl Fertman

Lawrence Green

Margaret Hall

Janette L. Helm\*

Alice Horowitz

Ping Johnson\*

Cheryl Lackey

Ellen Lee

Lisa Lieberman

Kathryn Meier

Angela Mickalide

Kathy Miner

Sarah Olson\*

Susan Resnik

Rob Simmons

Caille Spear\*

Jody Steinhardt

Emily Tyler

### MINER (\$25 - \$999)

Anonymous

Collins Airhienbuwa\*

Kathleen Allison\*

Kelly Bishop

Adenike Bitto

David Brown\*

Iris Castro-Revoredo

Claudia Coggin\*

J. Hope Corbin\*

Carol Cox

Colleen Dyson

Jody Early\*

JoAnne Earp

Linda Forys\*

Fern Goodhart

Carl Hanson

Elaine Hicks

Glenn Hildebrand

Cynthia Kratzke\*

Sue Lachenmayr

Shanna Livermore\*

David Lohrmann\*

Cheryl Merzel\*

Kathleen Middleton

J. Henry Montes

Patricia Mullen

Brea Onokpise\*

Ashley Parks\*

Karyn Pomerantz

Nicolette Powe\*

Rebecca Reeve

Kirsten Rogers\*

Heather Sellers\*

Cherylee Sherry\*

Michael Stelfson

Sue Telljohann\*

Mohammad Torabi

Elys Vasquez-Iscan

Gayle Walter\*

Matt Weinburke\*

---

*Legacy Circle Donors are remembered in perpetuity on SOPHE's interactive website*

**\*\* 2019-2020 Donors  
Moving up in Legacy Circle  
Recognition**

*\* 2019-2020 Donors*

## Thank You to our 2019-2020 Donors

Amos Aduroja	Robert Gold	Kathleen Parker
Diane Allensworth	Jeffrey Goodman	Ellen Phillips-Angeles
Kathleen Allison	Eryn Greaney	William Potts-Datema
Pauline Ameir	Lawrence Green	Nicolette Powe
Adetoun Asala	Emonie Hall	Alisha Redelfs
M. Elaine Auld	Cicily Hampton	Cheryl Reifer
Thailaya Berry	Heidi Hancher-Rauch	Susan Resnik
Debra Bill	John Hannay	Marilyn Rice
David Birch	Elaine Hicks	Stephanie Rockford
Kelly Bishop	Stephanie Holt	Kathleen Roe
Flora Bloom	Alice Horowitz	Abby Rosenthal
Brittney Bratcher-Rasmus	Melinda Ickes	Geraldine Rousculp
Jean Breny	Iowa SOPHE	Doraleena Sammons Hackett
William Brieger	Tyler James	Kathleen Schmalz
David Brown	Renny John	Anita Segó
Kelli McCormack Brown	Brigitte Johnson	R. Debra Shapiro
Molly Brown	Nancy Kingston	Mary Shaw-Ridley
Meghan Burroughs	Sue Lachenmayr	Cherylee Sherry
Kaitlin Cartoccio	Aaron Lands	David Sleet
Michelle Carvalho	Lisa Lieberman	Alan Sofalvi
Chelsea Chappell	Shanna Livermore	Caille Spear
Joanne Chopak-Foss	Ric Loya	Elizabeth Stevenson
J. Hope Corbin	Raffy Luquis	Patrick Stieg
Carol Cox	Patricia Mail	L. Nan Stout
Thometta Cozart	Cristina Malinis	Jean Taliaferro
Kay Deaner	Holly Mata	Tanisha Thompson
Jody Early	James McKenzie	Mohammad Torabi
JoAnne Earp	Cheryl Merzel	Julia Rae Varnes
Michael Fagen	Angela Mickalide	Gayle Walter
Heather Flattery	Katie Miller	Deitra Wengert
Deborah Fortune	Robin Mockenhaupt	
Linda Forsy	J. Henry Montes	<i>Donors Supporting Student</i>
Vincent Francisco	Donald Morisky	<i>&amp; Practitioner Meeting</i>
Molly French	Holly Moses	<i>Scholarships</i>
Stephen Gambescia	Quynh Nguyen	<i>1/2019 – 2/2020</i>
Gary Gilmore	Jen Nickelson	

# Thank you to our SOPHE 2020 Sponsors!

AMAZE

The James F. And Sarah T. Fries Foundation and CDC Foundation

Dan Heath

Emory University, Rollins School of Public Health -  
Department of Behavioral, Social, & Health Education Sciences

Emory University, Rollins School of Public Health - Executive MPH Program

Eta Sigma Gamma, Inc.

ETR

Fairleigh Dickinson University- School of Pharmacy & Health Sciences

Foundation for the Advancement of Health Education (FAHE)

Georgia State University

HealthCare Georgia Foundation

International Journal of Environmental Research and Public Health

Kennesaw State University

Montclair State University

19 SAGE Publishing, Inc.

The University of Alabama College of Continuing Studies | Academic Outreach

University of Florida - Department of Health Education and Behavior

University of Georgia - College of Public Health

University of Southern California - MPH Online Program

University of Texas - School of Public Health

Walden University

Wiley Publishing

# Thank you to our SOPHE 2020 Exhibitors!

Alcoholics Anonymous World Services, Inc.

AMAZE

American Association of  
Poison Control Centers

American School Health Association

American Society for Microbiology

CDC Division of Nutrition, Physical Activity  
and Obesity (DNPAO)

CDC's Healthy Schools

Central Michigan University

Chamberlain University

Emory University - Rollins School of  
Public Health Department of Behavioral, Social,  
& Health Education Sciences

Emory University, Rollins School of Public Health  
- Executive MPH Program

Eta Sigma Gamma

Fairleigh Dickinson University- School of  
Pharmacy & Health Sciences

Foundation for the Advancement  
of Health Education (FAHE)

FDA Office of Minority Health and Health Equity

FDA Office of Women's Health

Georgia Department of Health

Georgia Southern University

Georgia State University

Grand Valley State University

Indiana University at Bloomington School  
of Public Health

Institute for Healthcare Advancement

Jones & Bartlett

Liberty University

Loma Linda University - School of Public Health

Miami University

Morehouse School of Medicine

National Alliance for Hispanic Health

National Collaborative for  
Childhood Obesity Research (FHI 360)

Nationwide Children's Hospital

National Commission for Health Education  
Credentialing (NCHEC), Inc.

Peer Health Exchange

Penn State College of Medicine

Safe States Alliance

San José State University

Southern Connecticut State University

St. Ambrose University

Texas A&M University

The University of Alabama

University of Florida -  
Center for Arts & Medicine

University of Maryland, Baltimore -  
Health Professions Education PhD Program

University of Southern California -  
MPH Online Program

FDA Office of Regulatory Affairs

Walden University

Washington University - Brown School

Western Michigan University

**Please visit our exhibitors during the conference!**

Participate in the SOPHE2020 Scavenger Hunt in the mobile app for your chance to win a fully-paid registration to SOPHE 2021 Annual Conference in St. Louis or SOPHE 2020 Advocacy Summit in Washington, D.C., and other prizes too!



## Region IV Public Health Training Center

A MEMBER OF THE PUBLIC HEALTH LEARNING NETWORK

Providing free online and in-person training to the governmental public health workforce on strategic skills and priority health concerns.

Find the public health training you need in the format you prefer at [www.r4phtc.org](http://www.r4phtc.org).

# www.r4phtc.org



### International Journal of Environmental Research and Public Health

an Open Access Journal by MDPI

IMPACT FACTOR  
2.468

#### Editor-in-Chief

Prof. Dr. Paul B. Tchounwou  
Department of Biology,  
College of Science, Engineering  
and Technology, Jackson State  
University, 1400 Lynch Street,  
Box 18750, Jackson, MS 39217,  
USA

#### Editorial Office



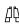
*IJERPH* Editorial Office  
[ijerph@mdpi.com](mailto:ijerph@mdpi.com)  
MDPI, St. Alban-Anlage 66  
4052 Basel, Switzerland  
Tel: +41 61 683 77 34  
Fax: +41 61 302 89 18  
[www.mdpi.com](http://www.mdpi.com)  
[mdpi.com/journal/ijerph](http://mdpi.com/journal/ijerph)

#### Message from the Editorial Board

Addressing the environmental and public health challenges requires engagement and collaboration among clinicians and public health researchers. Discovery and advances in this research field play a critical role in providing a scientific basis for decision-making toward control and prevention of human diseases, especially the illnesses that are induced from environmental exposure to health hazards.

*IJERPH* provides a forum for discussion of discoveries and knowledge in these multidisciplinary fields. Please consider publishing your research in this high quality peer-reviewed journal.

#### Author Benefits

-  **Open Access** Unlimited and free access for readers
-  **Rapid Publication** manuscripts are peer-reviewed and a first decision provided to authors approximately 19 days after submission; acceptance to publication is undertaken in 4.5 days
-  **Coverage by Leading Indexing Services** SCIE-Science Citation Index Expanded (Clarivate Analytics), SSCI-Social Sciences Citation Index (Clarivate Analytics), Scopus, MEDLINE (NLM), PubMed Central

#### Aims and Scope

*IJERPH* (ISSN 1660-4601) is a peer-reviewed scientific journal that publishes original articles, critical reviews, research notes, and short communications in the interdisciplinary area of environmental health sciences and public health. As a comprehensive multi-disciplinary journal, *IJERPH* is comprised of twenty three major sections.

#### Journal Sections

Children's Health  
Climate Change and Health  
Digital Health  
Ecology and the Environment  
Environmental Analysis and Methods  
Environmental Chemistry and  
Technology Emerging Contaminants  
Environmental Health  
Environmental Microbiology  
Environmental Remediation and  
Management Environmental Science  
and Engineering Global Health  
Women's Health

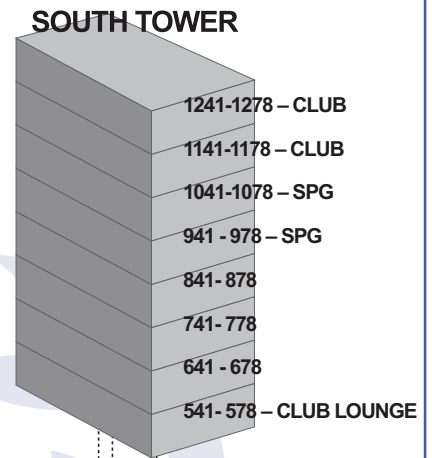
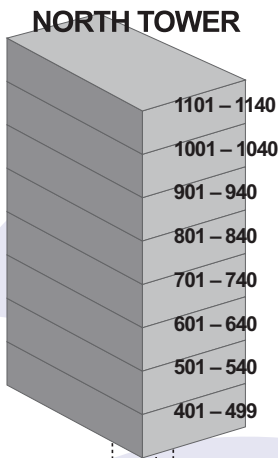
Health Behavior, Chronic Disease and  
Health Promotion  
Health Care Sciences and Services  
Health Communication  
Health Economics  
Industrial Ecology  
Infectious Disease Epidemiology  
Mental Health  
Occupational Safety and Health  
Public Health Statistics and Risk  
Assessment Toxicology and Public  
Health



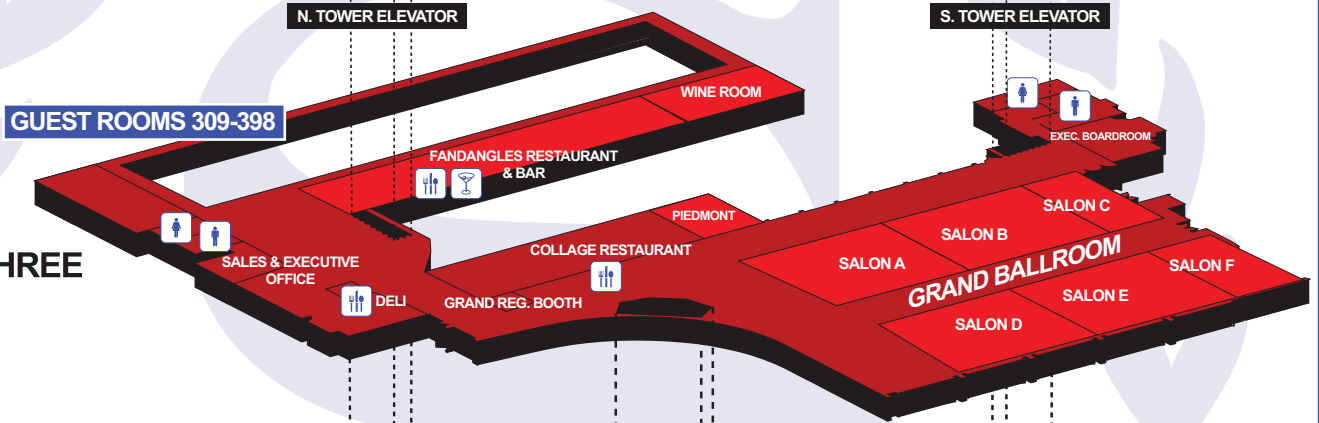


**Sheraton Atlanta**  
HOTEL

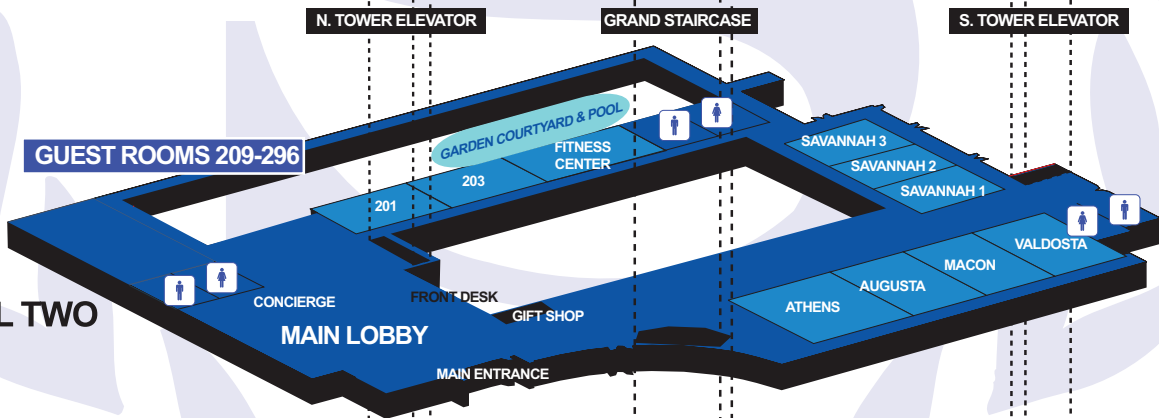
165 COURTLAND ST.  
ATLANTA, GA 30303  
www.sheratonatlantahotel.com  
ph: 404-659-6500  
fax: 404-524-1259



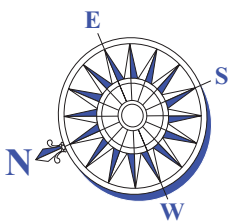
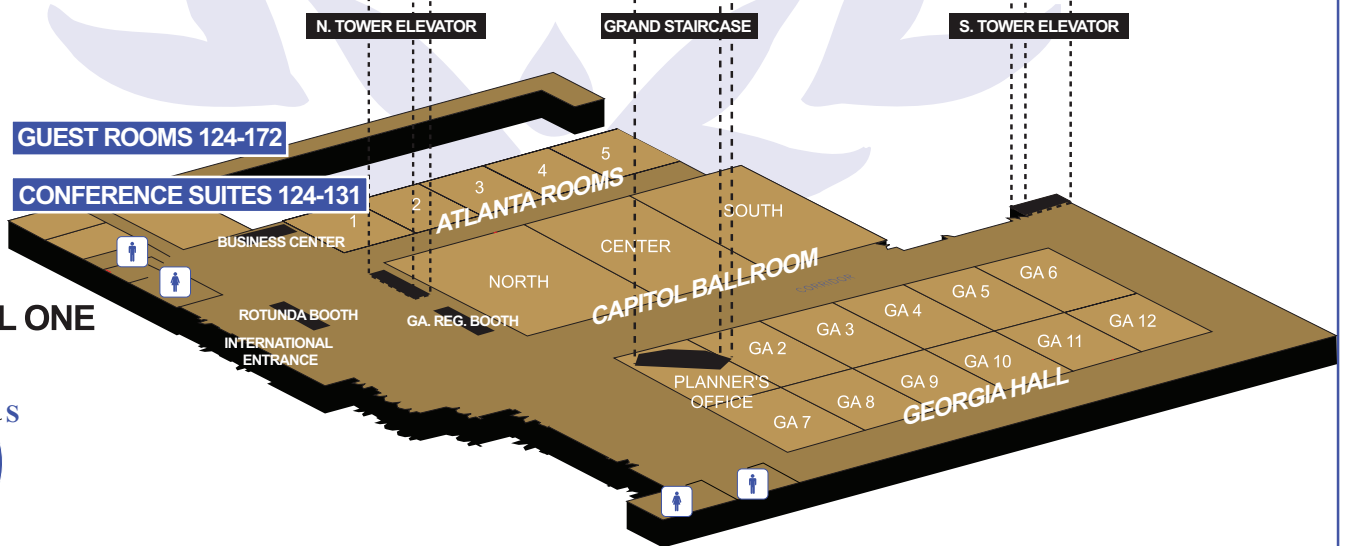
**LEVEL THREE**



**LEVEL TWO**



**LEVEL ONE**



# SEE YOU NEXT YEAR!

April 6 – 9, 2021  
St. Louis

**SUBMIT YOUR ABSTRACT IN APRIL!**

Early bird registration opens in September

## COME JOIN US TO:

- Share effective practices
- Learn about new trends
- Earn continuing education credits
- Network with your colleagues
- Meet new people
- ... and more!



[SOPHE.ORG](http://SOPHE.ORG) | [202.408.9804](tel:202.408.9804) | [#SOPHE2021](https://twitter.com/SOPHE2021)